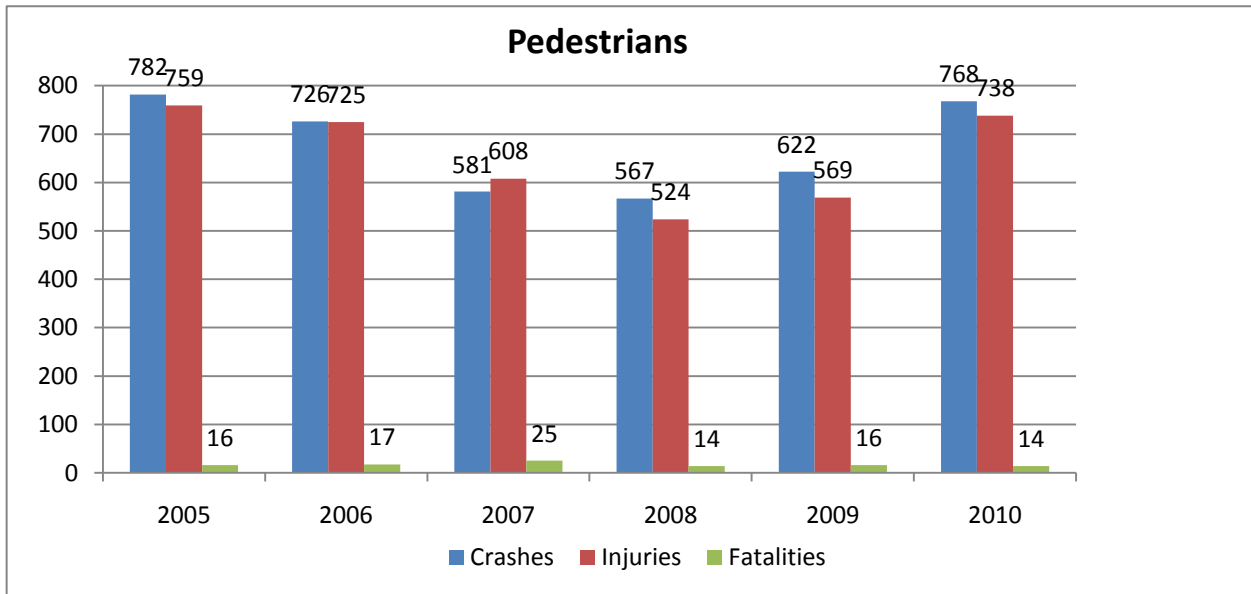
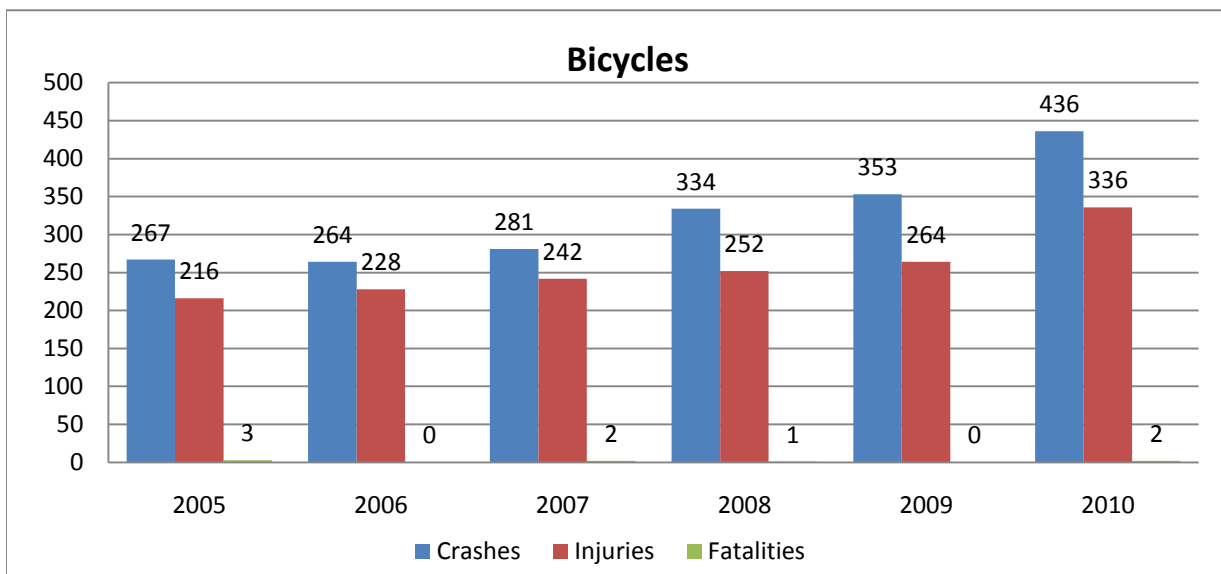


DC Pedestrian and Bicycle Crash Data 2005-2010

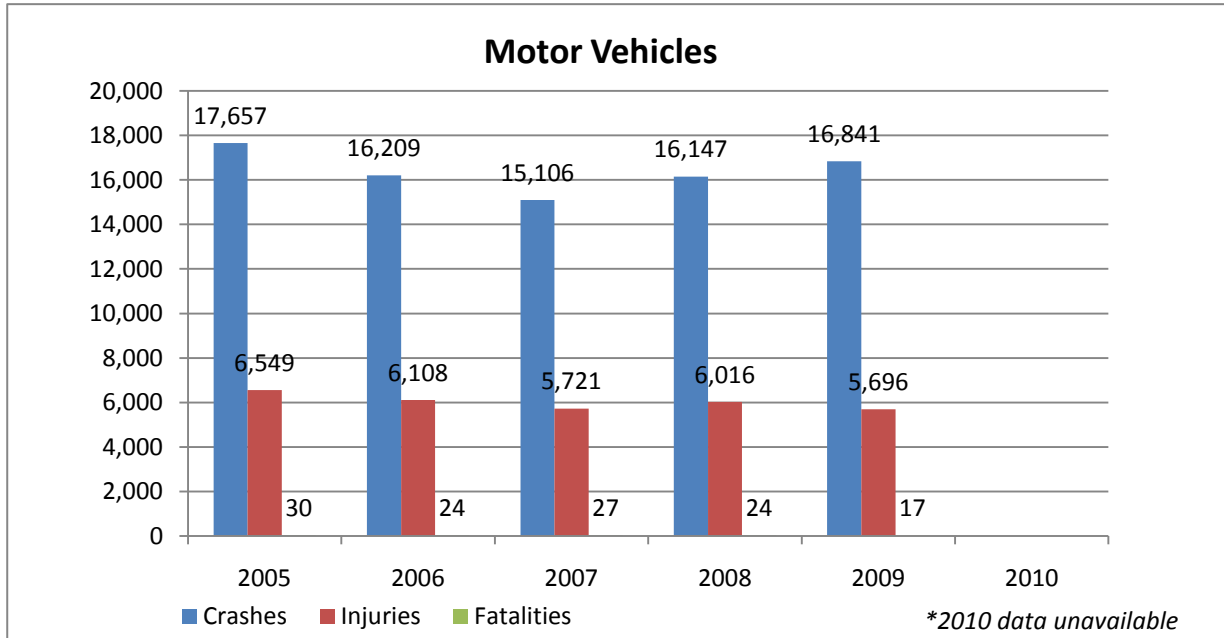


	2005	2006	2007	2008	2009	2010
Crashes	782	726	581	567	622	768
Injuries	759	725	608	524	569	738
Fatalities	16	17	25	14	16	14

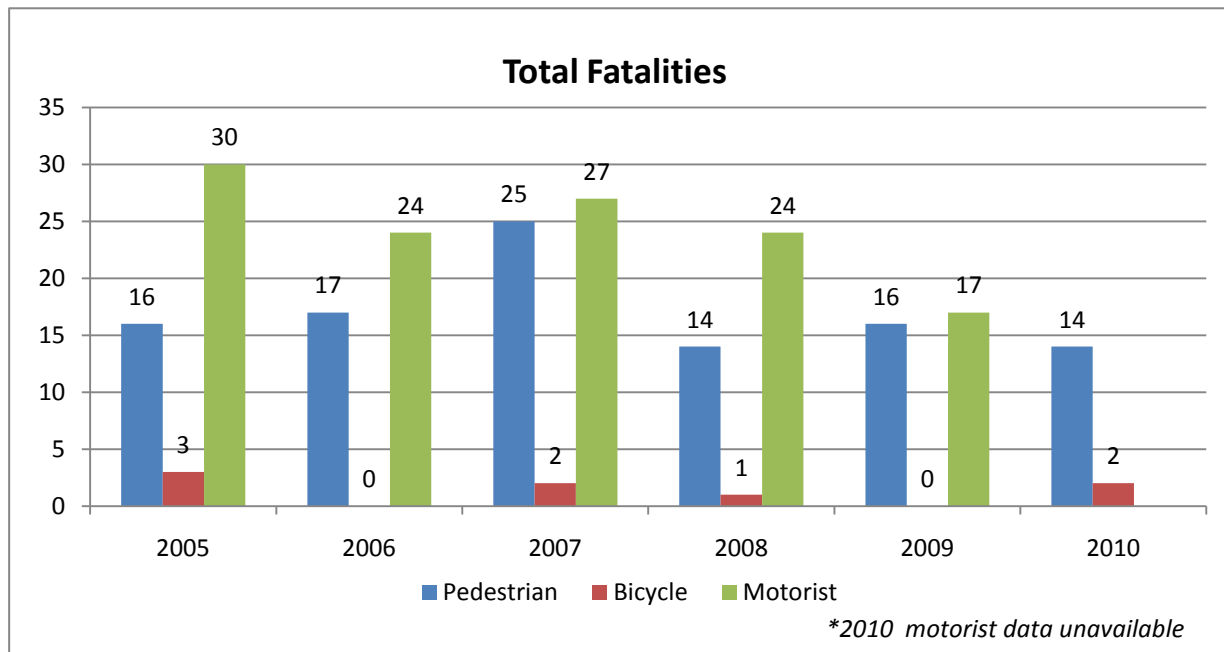


	2005	2006	2007	2008	2009	2010
Crashes	267	264	281	334	353	436
Injuries	216	228	242	252	264	336
Fatalities	3	0	2	1	0	2

DC Pedestrian and Bicycle Crash Data 2005-2010

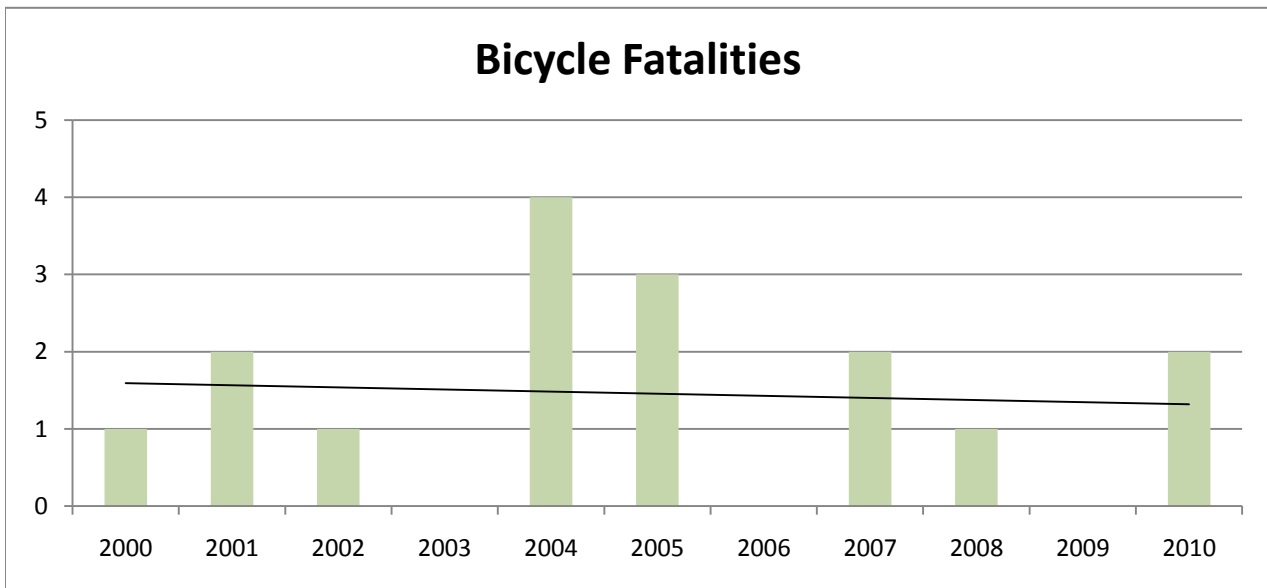
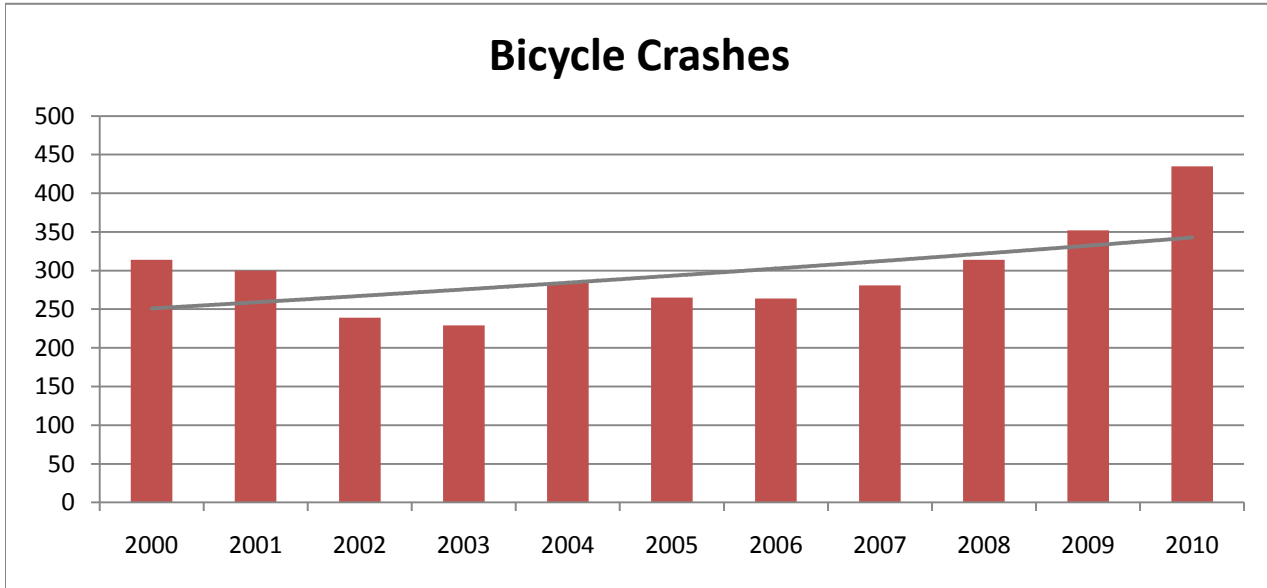


	2005	2006	2007	2008	2009	2010
Crashes	17,657	16,209	15,106	16,147	16,841	
Injuries	6,549	6,108	5,721	6,016	5,696	
Fatalities	30	24	27	24	17	

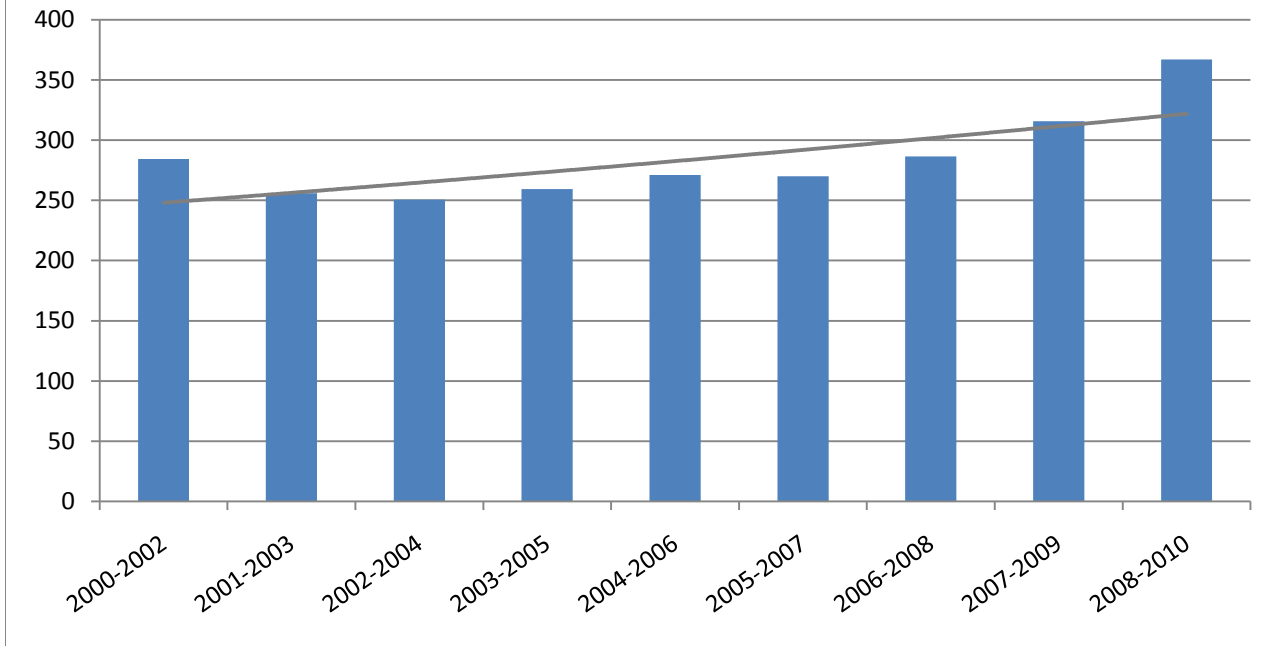


	2005	2006	2007	2008	2009	2010
Pedestrian	16	17	25	14	16	14
Bicycle	3	0	2	1	0	2
Motorist	30	24	27	24	17	

Year	2000	2001	2002	2003	2004	2005	2006
Crashes	314	300	239	229	284	265	264
Fatalities	1	2	1	0	4	3	0



Bicycle Crashes - 3 year rolling average



Three Year Rolling Averages

Year	2000-2002	2001-2003	2002-2004	2003-2005	2004-2006	2005-2007	2006-2008
Crashes	284.33	256.00	250.67	259.33	271.00	270.00	286.33

2007	2008	2009	2010
281	314	352	435
2	1	0	2

2007-2009	2008-2010
315.67	367.00