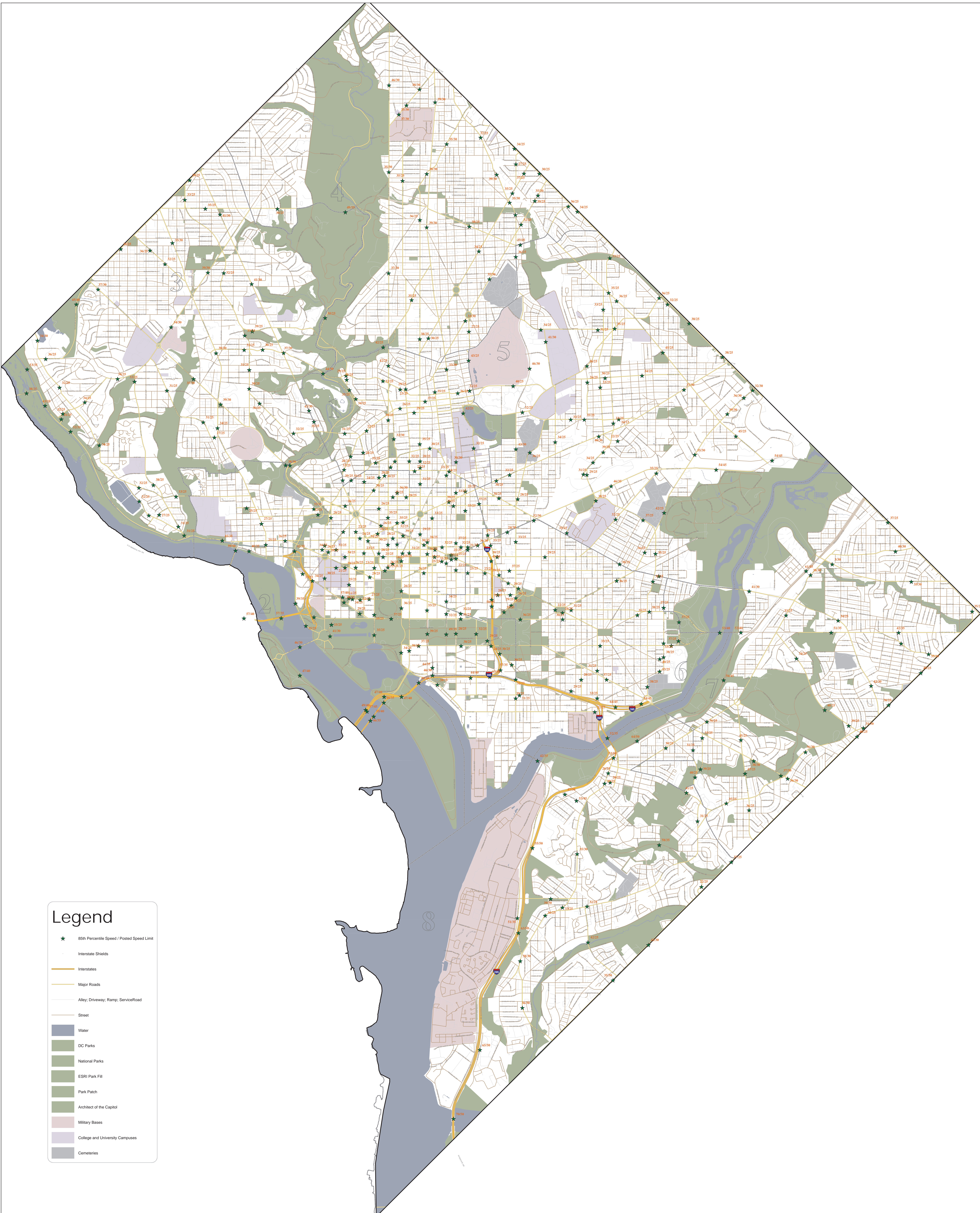
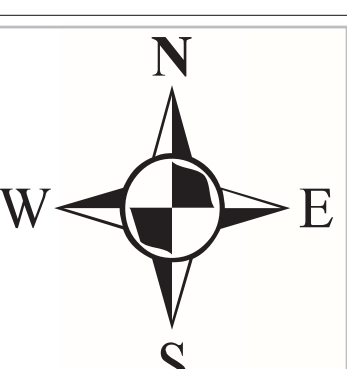


2006 WASHINGTON D.C. SPEED STUDY (466 LOCATIONS)



Legend

- ★ 85th Percentile Speed / Posted Speed Limit
- Interstate Shields
- Interstates
- Major Roads
- Alley, Driveway, Ramp, Service Road
- Street
- Water
- DC Parks
- National Parks
- ESRI Park Fill
- Park Patch
- Architect of the Capitol
- Military Bases
- College and University Campuses
- Cemeteries



Scale 1:20,500

The base map was compiled from aerial photography and airborne GPS data acquired in March and April 1999. All mapping is referenced to the Maryland State Plane Coordinate System 1983 North American horizontal datum and 1988 vertical datum in meters.



Data Source	DCGIS&DDOT/TSA	Date Created	April 12, 2007
Map Type	Standard Map	Expiration Date	N/A
Serial No	00000001	Created By	DDOT/TSA

Disclaimer

The information contained on this page is NOT to be construed or used as a "legal description". District Department of Transportation (DDOT) does not provide any warranty of accuracy or completeness regarding the map information. Any errors or omissions should be reported to the DDOT Geographic Data Systems Division of the Office of Information Technology & Innovations Administration. In no event will DDOT be liable for any damages, including but not limited to loss of data, lost profits, business interruption, loss of business information or any other pecuniary loss that might arise from the use of this map or information it contains.

Government of the District of Columbia
 Adrian M. Fenty, Mayor
 District Department of Transportation
 Eneka Moneme, Director

Office of Information Technology and Innovations
 Geographic Data Systems Division
 District Department of Transportation