

Signalized Intersection



Traffic Volume Count Location

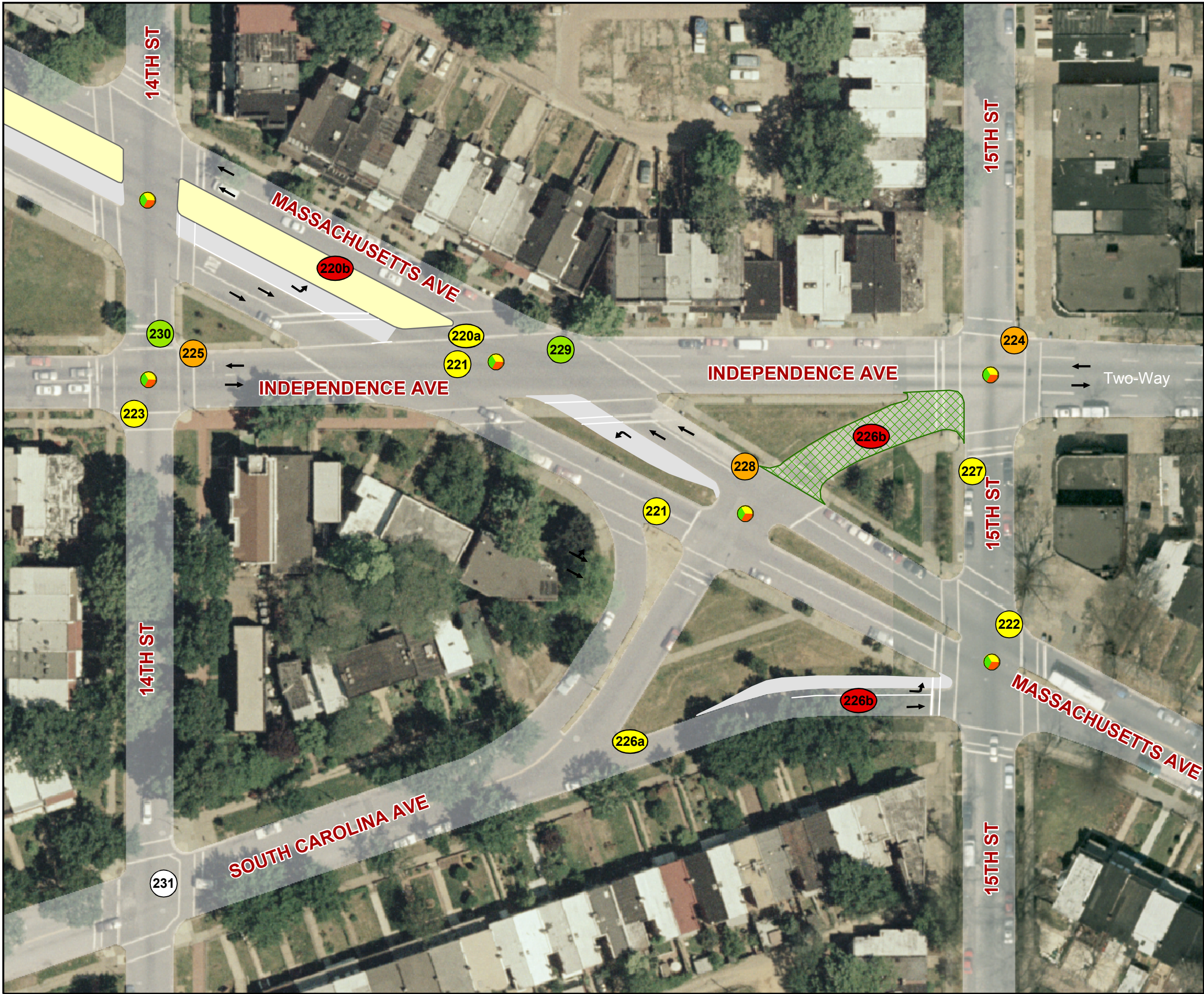
- 220** Double left turn bays on EB Massachusetts Ave. are configured in the center of the street's right-of-way. There is the potential for WB traffic along Massachusetts Ave to enter oncoming LH turn bays.
- 221** No pedestrian signals at entire complex of intersections; especially dangerous at Independence and Mass, long crossings to not have signals.
- 222** Traffic signal pointing the wrong direction.
- 223** Traffic signal pointing the wrong direction.
- 224** No ADA ramps at north or south sides of pedestrian crossing.
- 225** Lack of adequate ADA ramps at the intersection of 14th Street and Independence Avenue.
- 226** Unprotected signal for EB movement South Carolina Ave to EB Independence Avenue.
- 227** Traffic on 15th Street must merge left because of parking in the off-peak period.
- 228** Deteriorated curb at South Carolina Avenue with no ramp or crosswalk.
- 229** Confusing signage at right along EB Mass Ave: Left turn and "Do Not Enter" signs in similar direction; From SB 14th to EB Mass there is no indication which lanes to turn into; No signage indicating left turn lanes are to Independence (instead direct to RFK).
- 230** Issue with signal timing and green arrow orientation
- 231** "No Left Turn" at South Carolina Ave to NB 15th St SE. This movement could have its own phase.


Figure 7-24


Potential Transportation Problems
14th Street / 15th Street / Independence
Ave / Massachusetts Ave / South
Carolina Ave SE



0 60 120 Feet



 **Signalized Intersection**

 **Traffic Volume Count Location**

220a Install "Do Not Enter" sign for WB traffic at EB turn bays.

220b Eliminate Channelized left turn; only one turn lane needed from EB Massachusetts Ave to EB Independence Ave. Install Landscaped Median.

221 1) Install pedestrian "countdown timers" at all cross-walks.
2) Install ladder-style crosswalks as appropriate.

222 Install pedestrian "countdown-timer" type signals at all signalized intersections

223 Reposition signal and make sure it is MUTCD compliant.

224 Install ADA ramps at both sides of the crossing.

225 Install ADA ramps at all crosswalks.

226a 1) Place Directional sign at core area of S Carolina Ave, direct 15th Street bound traffic to use right lane.
2) Install potential left turn from EB S Carolina to NB 15th St.
3) Reorient 'No Left Turn' sign or place on east side of Intersection.

226b Eliminate ramp from S Carolina Ave to independence Ave North of MASSachusetts Ave.


227 Add signage warning of the merge, or adjust parking restrictions.


228 Install ADA ramps..


229 Install directional signage according to MUTCD standards at EB Mass Ave. and SB 14th St. so appropriate messages are conveyed clearly.


230 Repair timing and green arrow orientation.

231 No recommendation

 Priority Short Term Improvements

 Short Term Improvements

 Medium Term Improvements

 Long Term Improvements



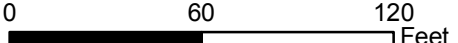
 Time frame to be determined

Figure 7-25

Recommended Improvements
14th Street / 15th Street / Independence Ave / Massachusetts Ave / South Carolina Ave SE

Capitol Hill Transportation Study

December 2006 Page 56