



Rehabilitation of Aspen Street NW

16th Street NW to Georgia Avenue NW

d.

Public Meeting
July 9, 2020

Presenters:
Samer Alhawamdeh, DDOT
Randall Clarke, DMPED

Agenda

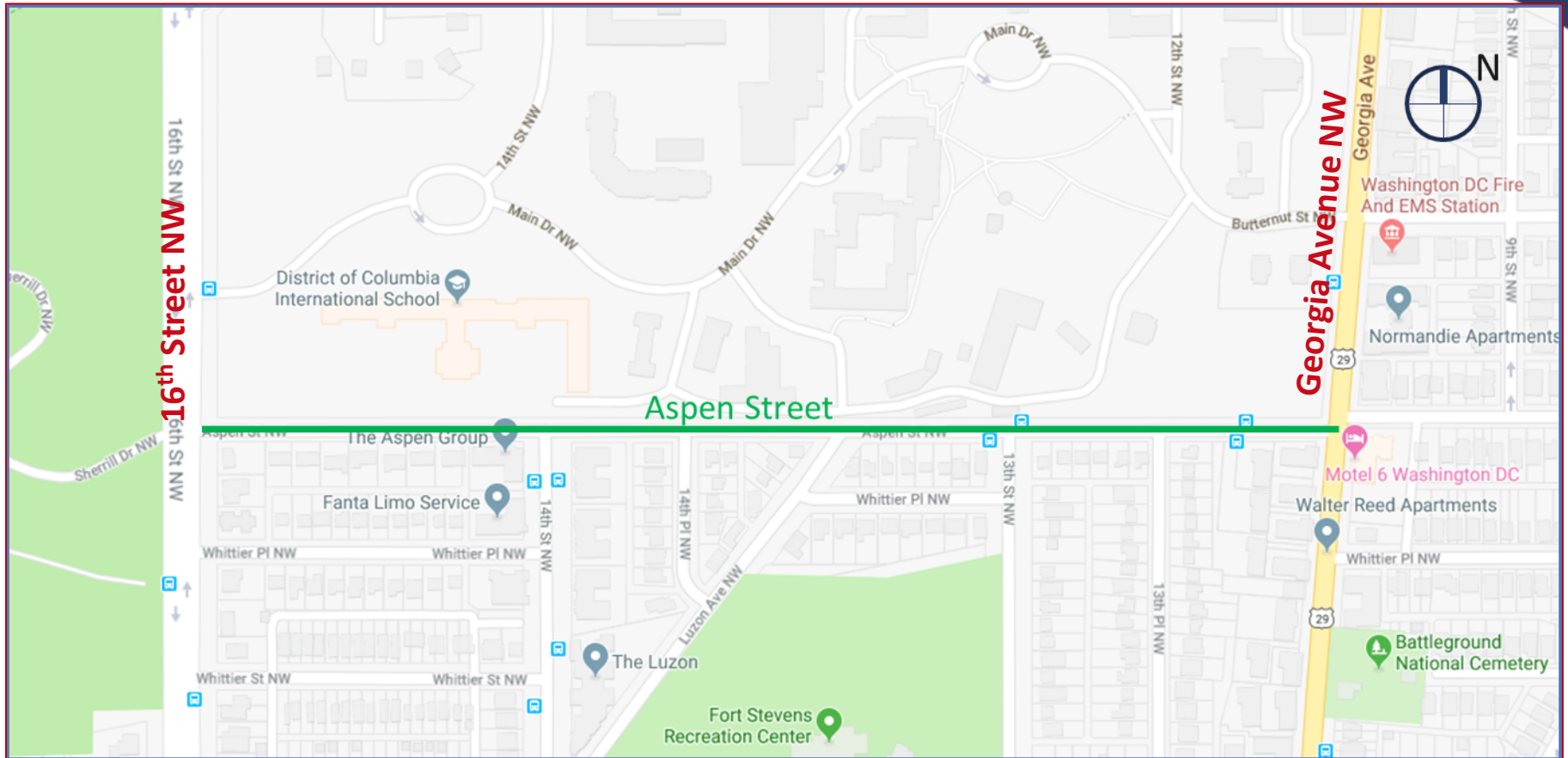
- Project Introduction
- Project Location
- Timeline
- Project Improvements

Project Overview

Aspen Street NW (from 16th Street to Georgia Avenue) is a multi-modal transportation corridor located in the Brightwood community adjacent to the Walter Reed Campus (south side). The District Department of Transportation (DDOT) is working to:

- Improve safety/mobility for motorists, bicyclists, and pedestrians
- Coordinate with Walter Reed Redevelopment
- Preserve and enhance the historical significance of Aspen Street NW

Project Location



Project Schedule

- Project Kick-off January 2019
- Public Meeting May 2019
- 30% Preliminary Design Complete Summer 2019
- 65% Intermediate Design Spring 2020
- ANC 4A Meeting July 2020
- 100% Final Design Winter 2020
- Start of Construction Summer 2021(anticipated)

Shed Updates

- Two sheds (Buildings 31 and 84) are within new Aspen Street right-of-way.
- DMPED is leading application to Mayors agent thorough Historic Preservation Review Board (HPRB) to remove sheds.
- Mayor's Agent for Historic Preservation has approved the removal of the sheds

Building 31 - Oil Storage



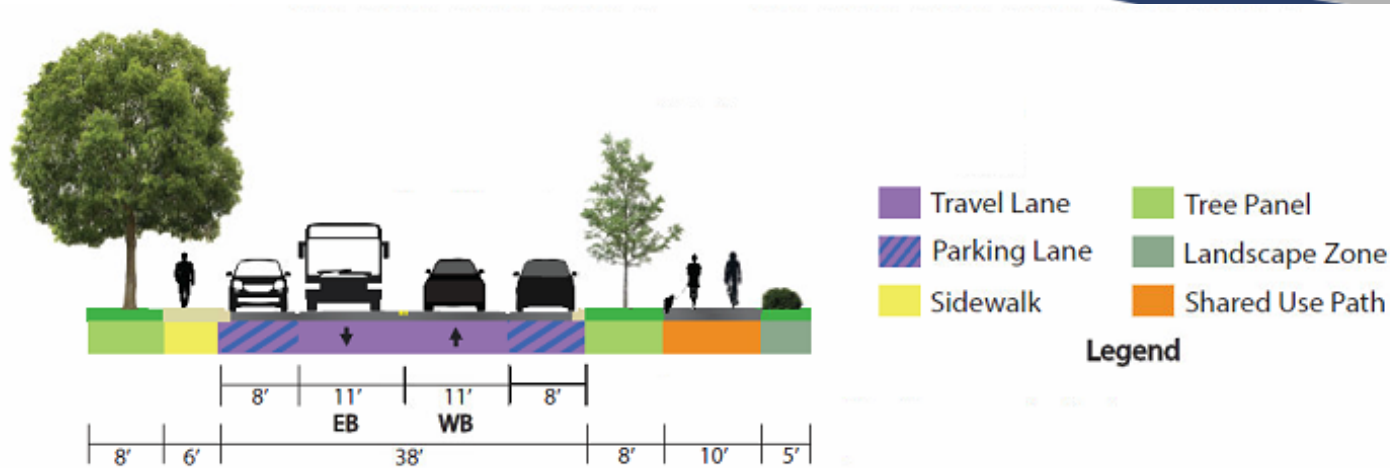
Building 84 - Wagon Shed



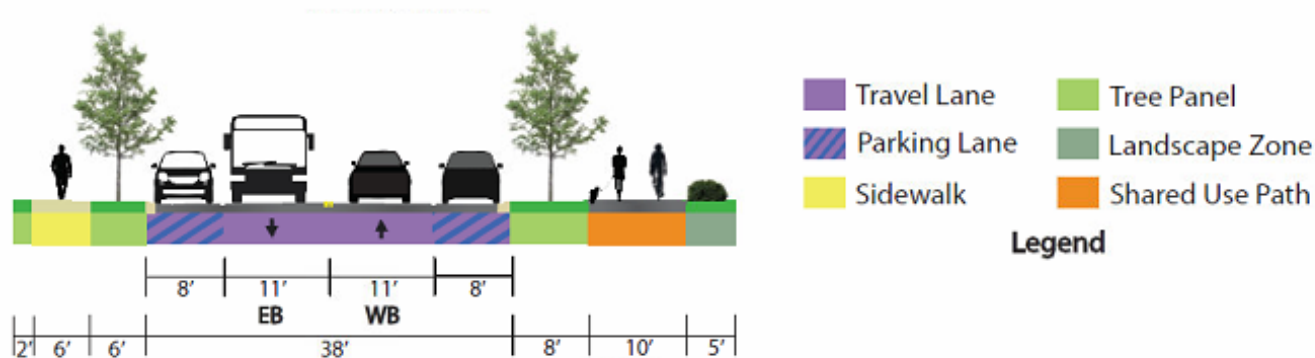
Key Design Elements

- Pedestrian/Bicycle Trail
- Safety Improvement
- Traffic Calming Measures
- Street Lighting Upgrades
- Improved Traffic Signal Operation
- ADA Compliances
- Roadway Reconstruction
- Sidewalk Reconstruction
- Drainage Improvements
- Landscaping Improvement
- More Trees / Preserve Existing Trees
- Low Impact Development (LID)

Proposed Typical Cross-Section



Proposed Typical Section
16th Street to Luzon Avenue



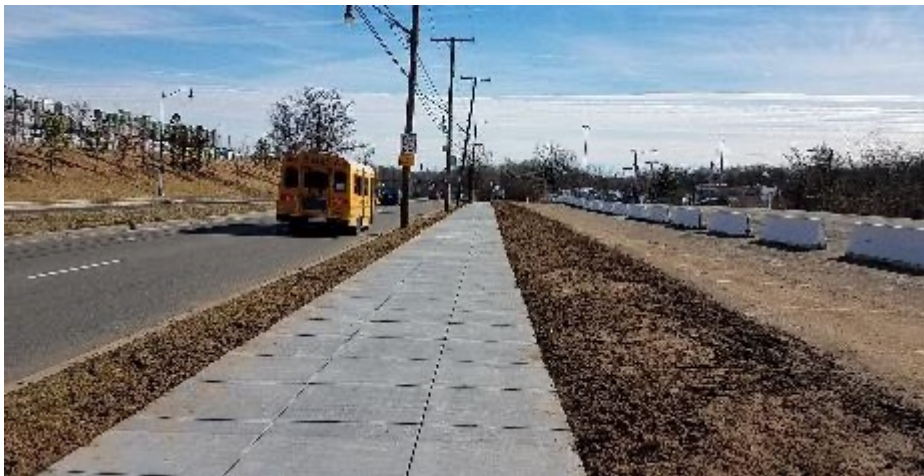
Proposed Typical Section
Luzon Avenue to Georgia Avenue

Pedestrian/Bicycle Trail

- Similar Multi-use Trails in the City



Pennsylvania Avenue SE



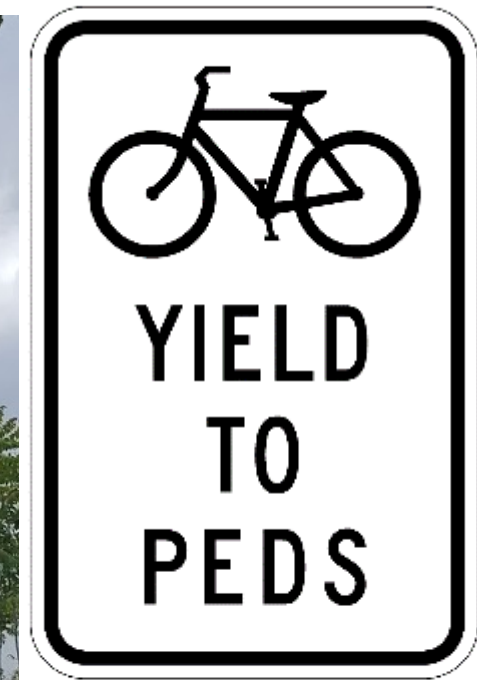
South Dakota Avenue NE



Eastern Avenue

Pedestrian/Bicycle Trail

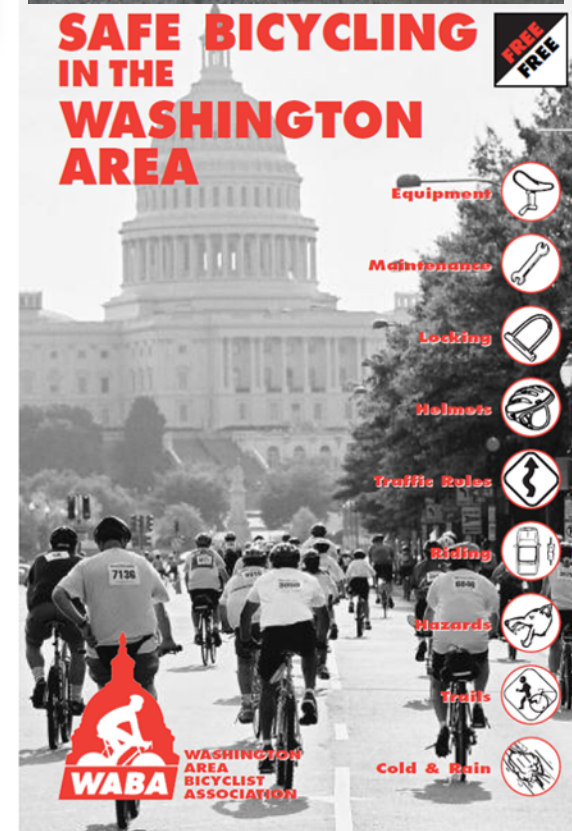
- Trail etiquette and space for all users



Metropolitan Branch Trail

Trail Education

- Safe Routes to School
- Adult Learn to Ride
- Confident City Cycling
- ABCs of Family Cycling
- Since 2015 all DC 2nd Graders learn how to ride (purchased over 900 bikes)
- WABA Bicycle Ambassadors and Trail Rangers
- Educated over 2300 Children & Adults in 2019



Proposed Improvements (16th St to W. of 14th St)



Proposed Improvements (West of 14th St to 14th Pl)



Proposed Improvements (14th Pl to W. of 13th St)



Proposed Improvements (W. of 13th St to 13th Pl)



Proposed Improvements (13th Pl to Georgia Ave)



Project Contacts

DDOT, Project Manager

Samer Alhawamdeh

202-369-4637

samer.alhawamdeh@dc.gov

DMPED, Director Walter Reed

Local Redevelopment Authority

Randall Clarke

202-727-1692

randall.clarke@dc.gov

Contact our outreach coordinator for any questions:

Public Outreach Coordinator

Stacee Hemby

202-518-9101

stacee@tbaconnects.com

DDOT Project Website:

<https://ddot.dc.gov/page/rehabilitation-aspen-street-nw>

Questions?

d. delivers

district department of transportation



Proposed Improvements

- Drainage and Stormwater management improvements
- Landscaping and street trees to enhance neighborhood
- Green Infrastructure:
 - Parking lane porous asphalt
 - Bio-retention planters

