



Wheeler Road Multimodal Safety and Access Project

Spring 2021



Agenda

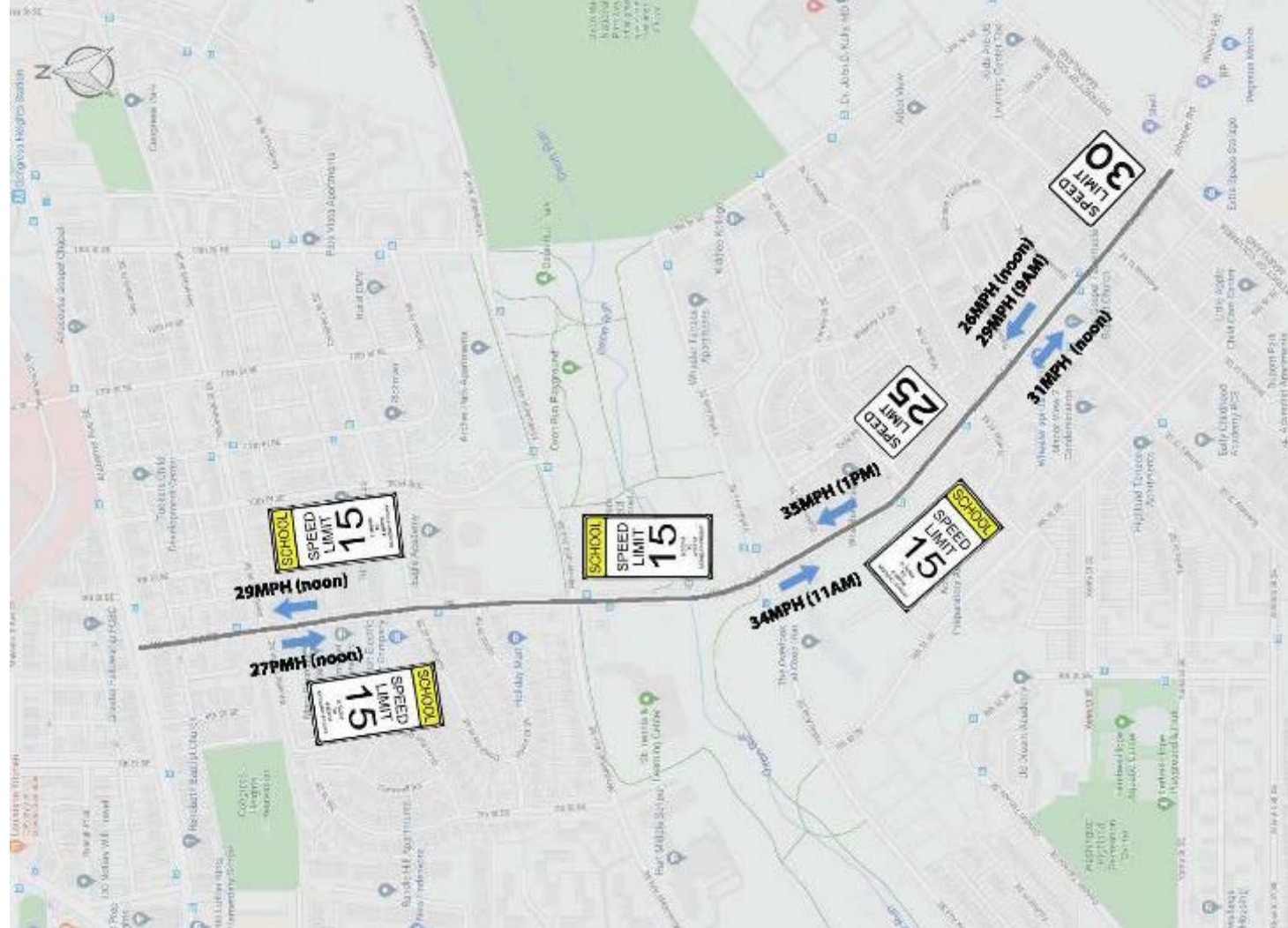
1. Share Roadway Information

- Speeding
- Crashes
- Transit
- Curbside Uses

2. Introduce Traffic Safety Solutions/Tools

3. Gather Feedback - Online Survey

Speeding



Speed Reduction Tools – Median Islands

1. Slows traffic by narrowing the roadway
2. Speed reductions between 1 and 8 mph (FHWA)



Speed Reduction Tools - Automated Speed Enforcement Cameras

1. In DC, 82% reduction in the proportion of vehicles exceeding the speed limit by more than 10 MPH
(DC Policy Center)
2. In DC, cameras reduced travel speeds by 14%
(DC Policy Center)
3. Reduces crashes by 17%
(FHWA Speed Management Toolkit)

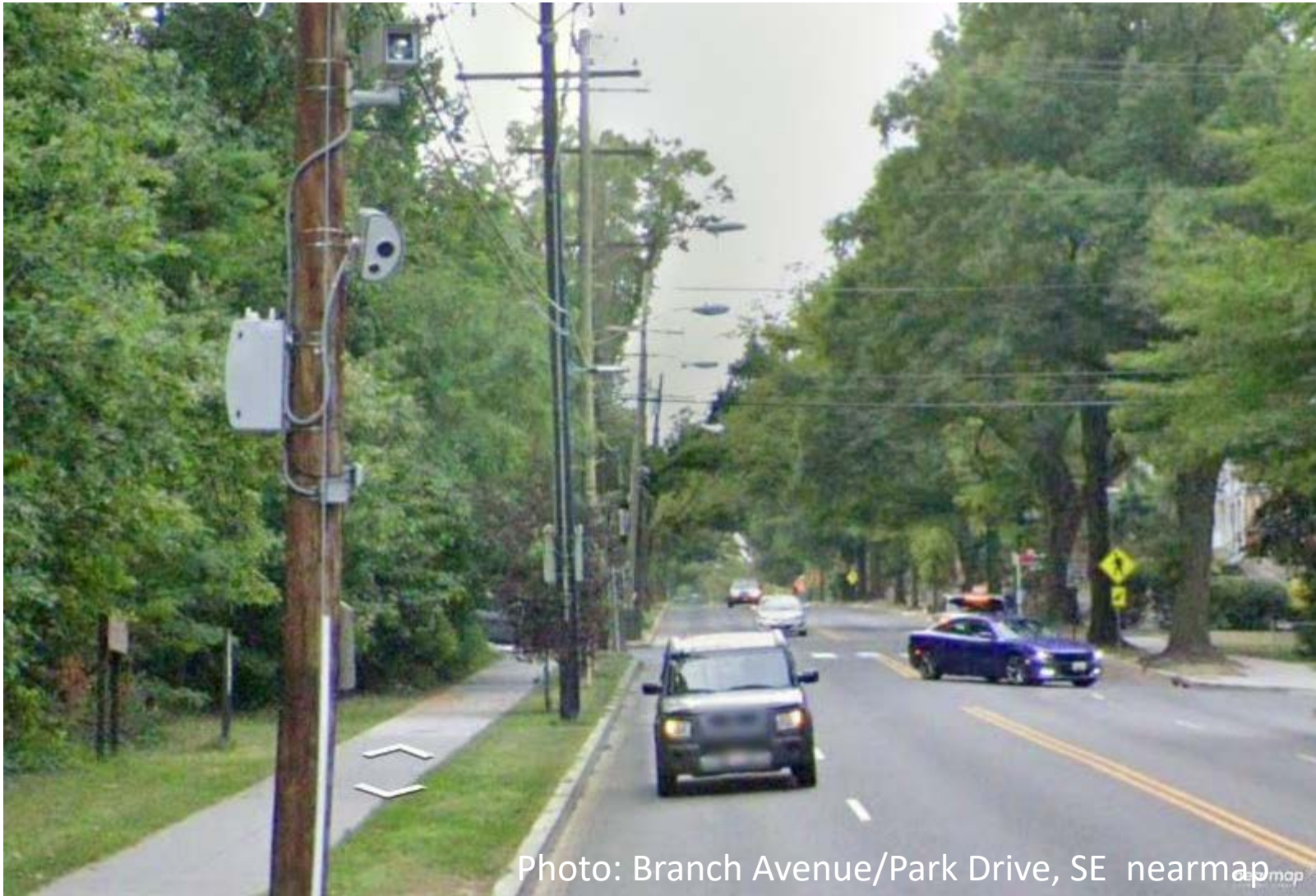


Photo: Branch Avenue/Park Drive, SE nearmap

Speed Reduction Tools - Parking Boxes + Curb Extensions

1. On-street parking can slow traffic 1-5 MPH (FHWA)
2. Curb extensions slows turning traffic



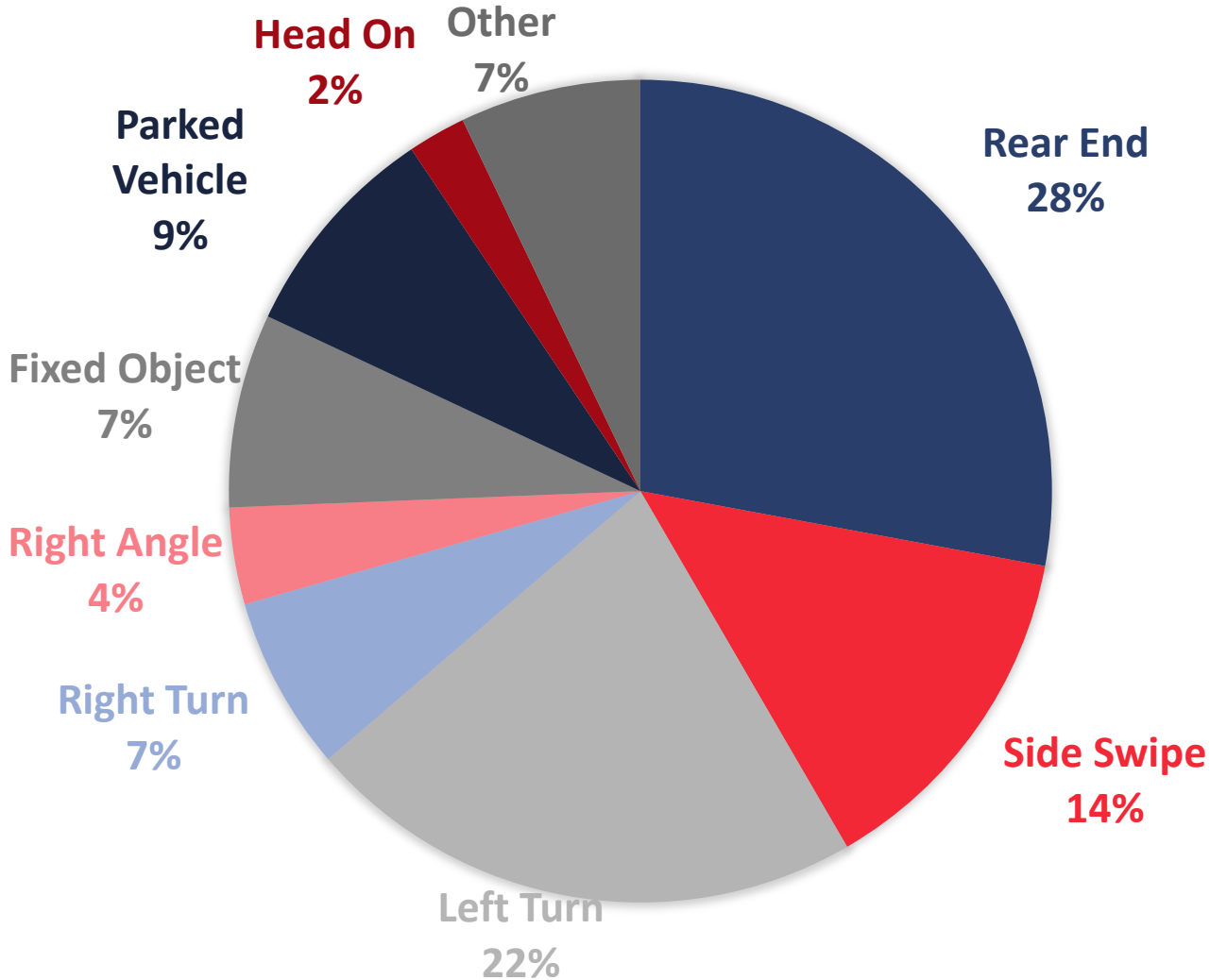
Image: FHWA PEDSAFE

Crashes (2017-2019)

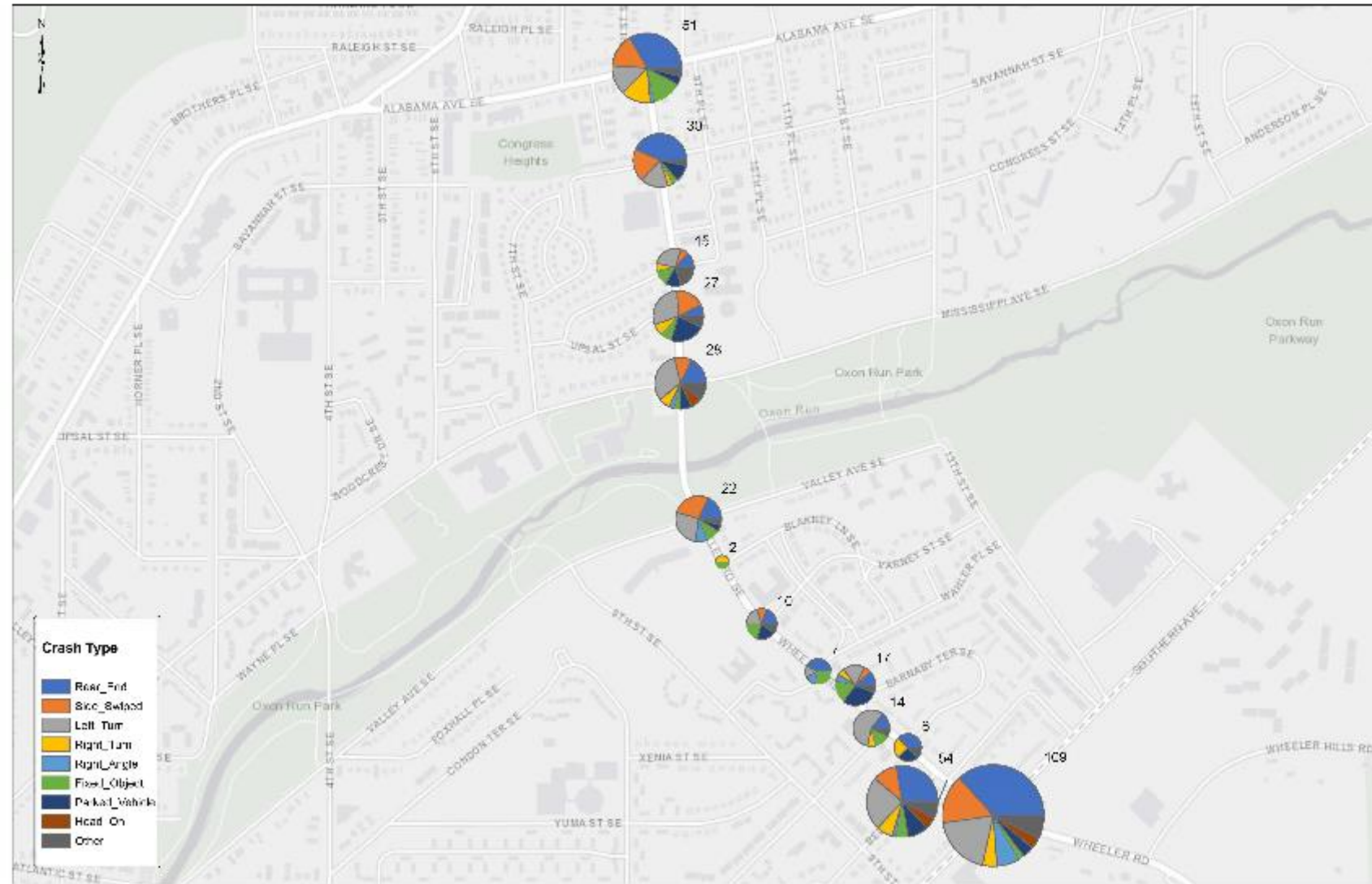




Crash Types (2017 – 2019)

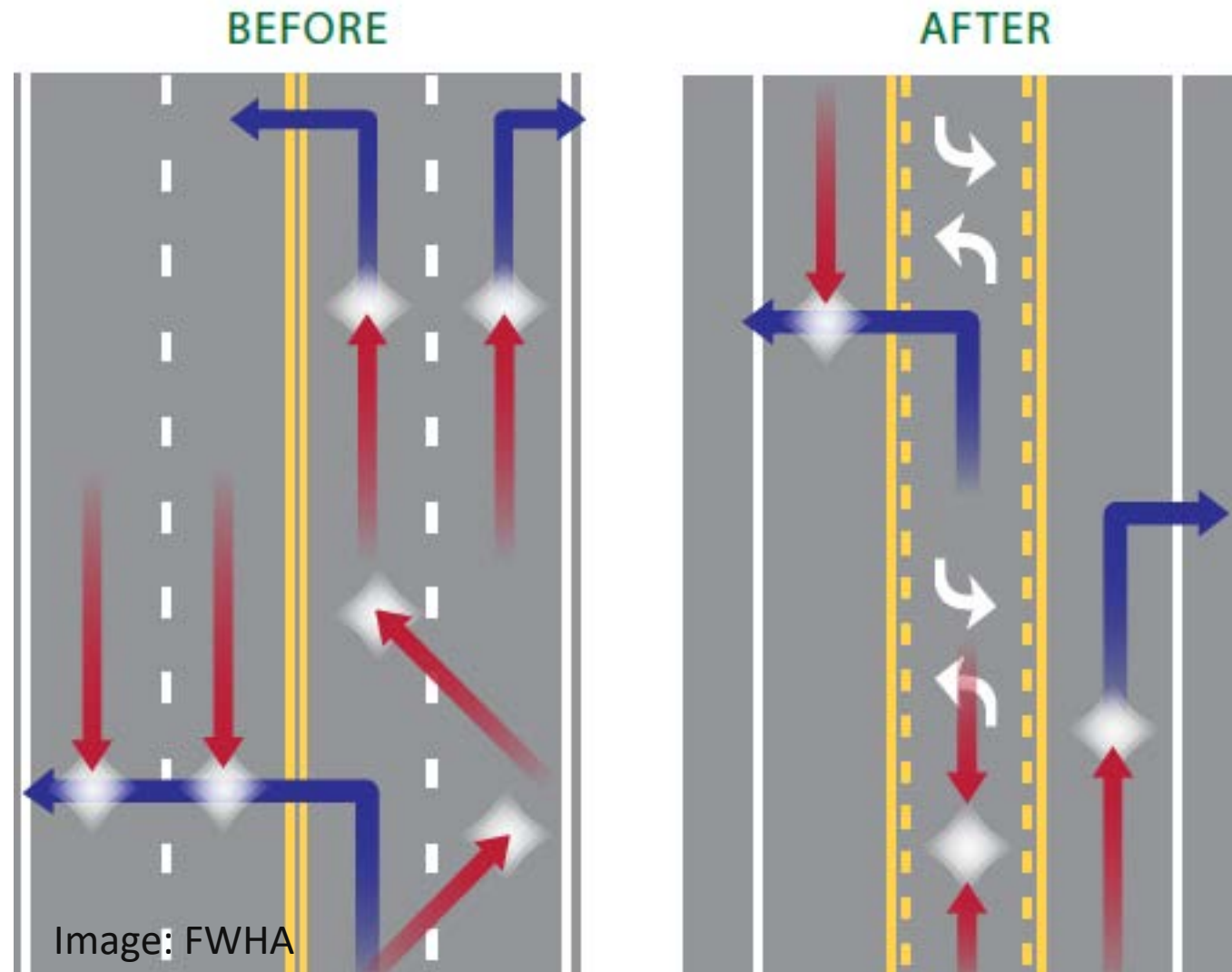


Crash Types (2017 – 2019)



Crash Reduction Tools – Road Diet

1. 19% - 47% overall crash reduction ([FHWA](#))
2. Reduces rear-end, left turn, and right angle crashes
3. Reduces delays by separating left turns
4. More consistent traffic flow and less “accordion style” slow-and-go operations
5. Safer for pedestrians to cross with fewer lanes and if a pedestrian island is added
6. Safer for bicyclists if extra space is converted to a bike lane



Crash Reduction Tools – Median Island with Pedestrian Cutout

1. Shown to reduce pedestrian crashes by 56% (FHWA)
2. Improves pedestrian safety
3. Slows and calms vehicular traffic



Transit



Transit Tools – Curb Extensions (temporary/quick build shown here)

1. Reduces pedestrian crossing distances and exposure to traffic
2. Improves visibility for pedestrians and drivers
3. Keeps vehicles from parking too close to intersections/blocking crosswalks



Photo: Good Hope Rd/13th St., SE nearmap

Transit Tools – Median Island with Pedestrian Cutout

1. Shown to reduce pedestrian crashes by 56% (FHWA)
2. Provides pedestrian protection from vehicles
3. Simplifies pedestrian crossings by allowing pedestrians to cross one direction at a time



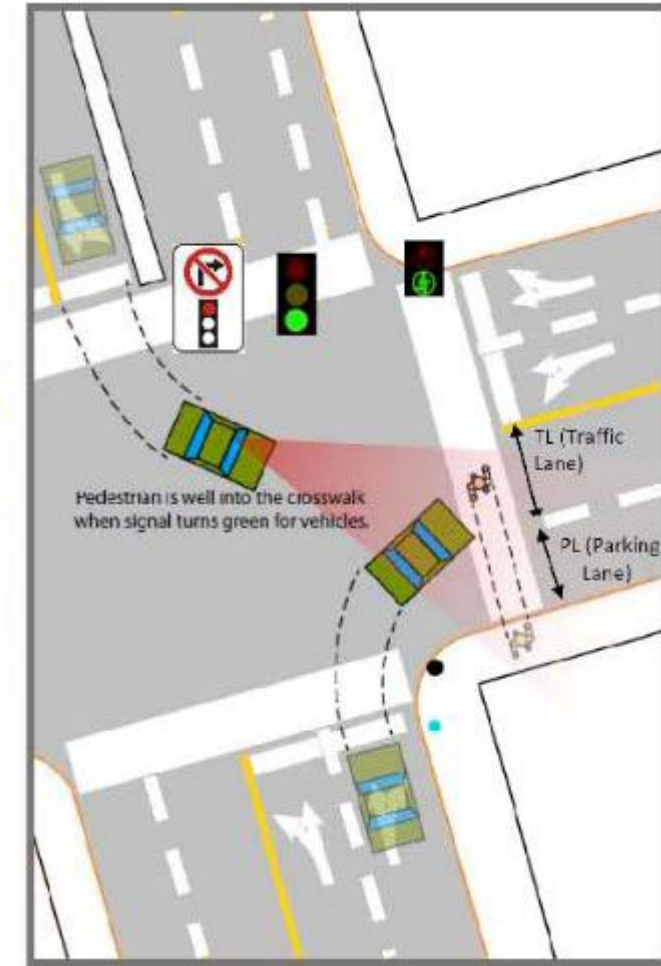
Transit Tools – Rectangular Rapid Flashing Beacon

1. Reduces pedestrian crashes by 47% (NCHRP)
2. Increases driver yielding 18% - 81% (FHWA)
3. Effective at multilane crossings with speed limits less than 40 mph (PEDSAFE)



Transit Tools – Leading Pedestrian Interval

1. Reduces pedestrian-vehicle crashes as much as 60% (NYCDOT)
2. Gives pedestrians 3-7 second head start at a crosswalk
3. Enhances the visibility of pedestrians and reinforces their right of way over turning vehicles



Transit Tools – Bus Island

1. Improved transit delivery by allowing buses to pickup passengers without leaving the travel lane
2. Improves safety by eliminating conflicts between bikes and buses



Source and Image: [NACTO](#)

Transit Tools – Bus Priority Lane

1. Improves bus travel schedule and reliability
2. Creates dedicated lane for buses, bicycles and scooters



Source: [WashCycle](#)



Curbside Uses



Curbside Tools – Structured Parking

1. Painted parking boxes and signs prevent vehicles from parking too close to crosswalks and impeding visibility
2. Short-term parking zones at schools can streamline pick-up and drop-off



Image Source: [FHWA](#)

Curbside Tools - Chicanes

1. Chicanes “bookend” parking and discourage speeding
2. Staggered chicanes create “curves” on a street and slow traffic

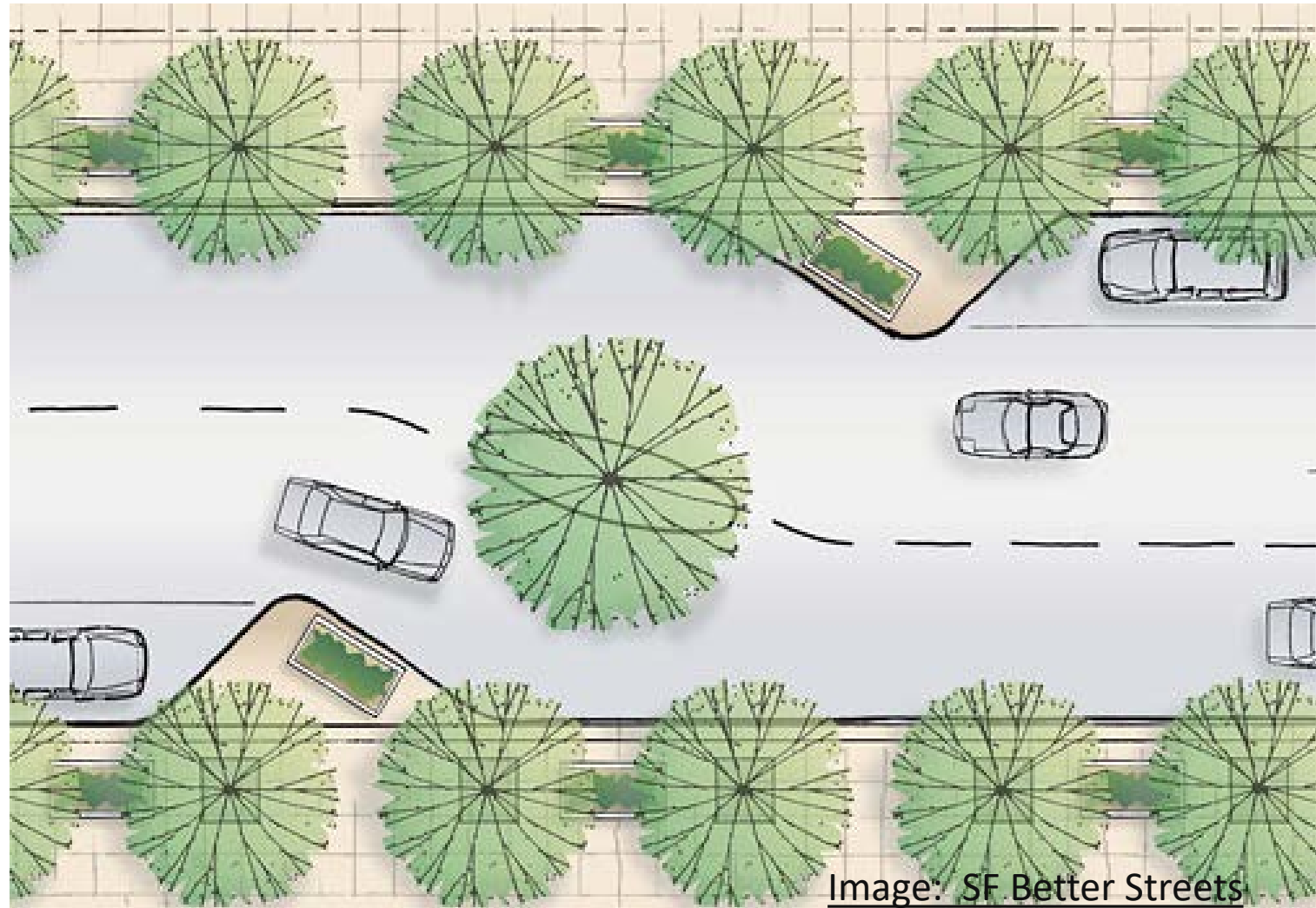


Image: SF Better Streets



Please provide feedback by taking the Wheeler Road Survey

<https://forms.gle/EQjiBkMv1kZwXiLk9>

Project website:

<https://ddot.dc.gov/page/wheeler-road-se-roadway-safety-and-complete-streets-project>



District Department of Transportation