

PALISADES TROLLEY TRAIL & FOUNDRY TRESTLE FEASIBILITY STUDY: TRAIL OVERVIEW

PROPOSED TRAIL DESIGN

- 11' wide trail with 2' clear space on either side
- Trail Surface
 - » **West of Foundry Branch Bridge**
 - » Stabilized crushed granite trail surface proposed
 - » Flexible porous pavement trail surface also possible
 - » **East of Foundry Branch Bridge**
 - » Asphalt trail surface proposed
- Passive open space adjacent to trail where possible
- Trailhead areas could include signage, seating, landscaping, bike racks, trash cans, and other amenities

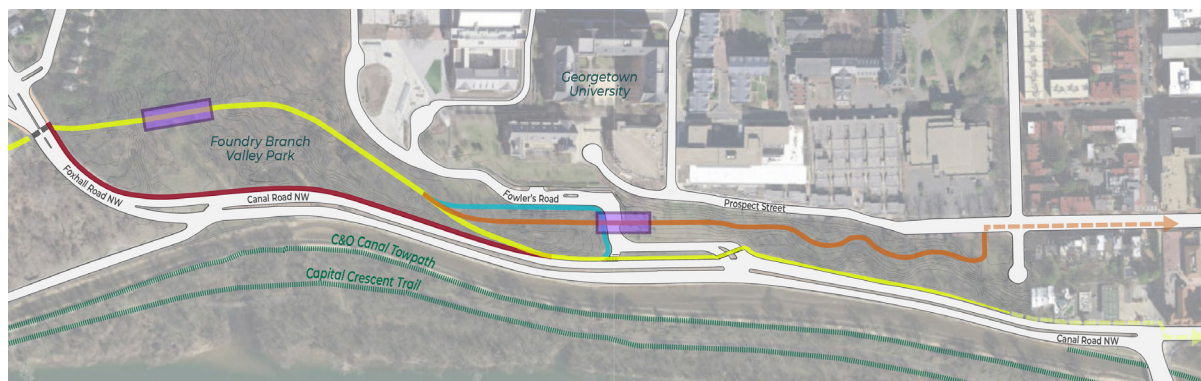
ESTIMATED TRAIL COST

Does not include the cost of new or rehabilitated bridges, connection to Capital Crescent Trail, or Arizona Avenue Bridge project

\$3.8-\$4 Million



TRAIL ALIGNMENT OPTIONS EAST OF FOXHALL ROAD



- Option 1:** Foundry Trestle Bridge to Canal Road
- Option 2:** Canal Road
- Option 3:** Foundry Trestle Bridge to Fowler's Road
- Option 4:** Foundry Trestle Bridge to New Bridge to Prospect St
- New/Rehabilitated Bridge**

FEEDBACK NEEDED:



Preferred trail alignment option



Location of trail access points

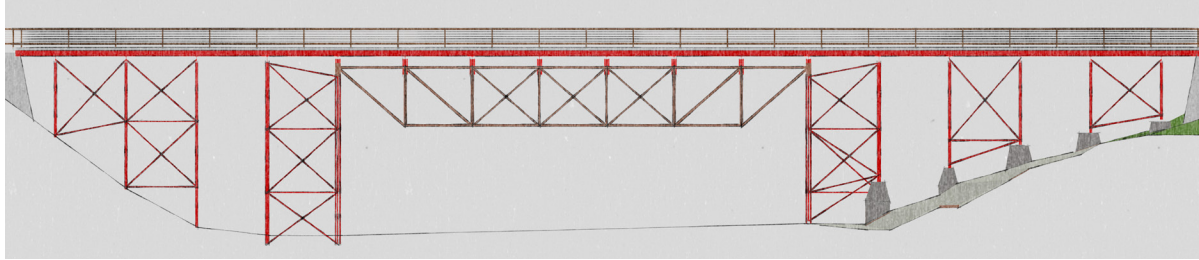


Desired trail amenities

PALISADES TROLLEY TRAIL & FOUNDRY TRESTLE FEASIBILITY STUDY: FOUNDRY TRESTLE BRIDGE

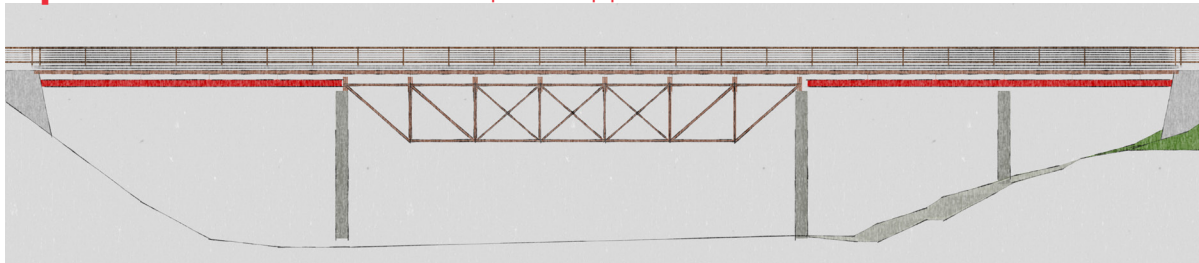
BRIDGE REHABILITATION OPTIONS

Option 1: Rehabilitate + Replace Existing Bridge



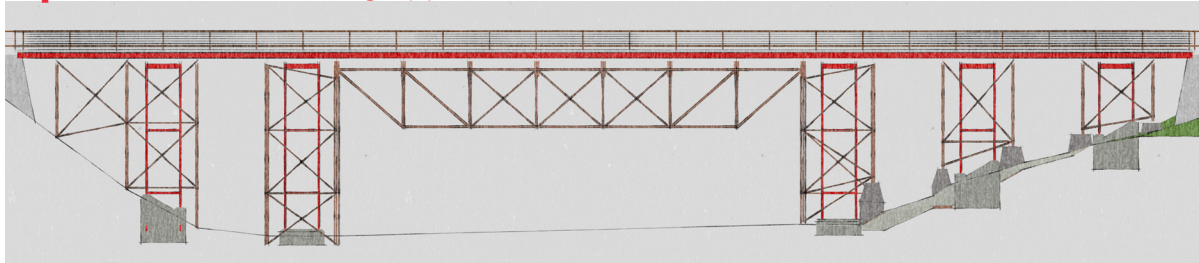
Estimated Cost
\$2.5-\$5.3
Million

Option 2: Rehabilitate Truss + Replace Approaches



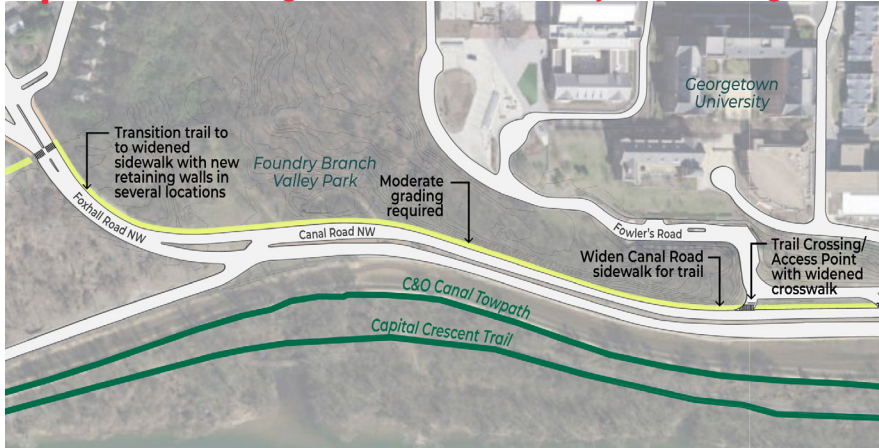
Estimated Cost
\$2.1-\$4.5
Million

Option 3: Retain Existing Approaches as a Facade



Estimated Cost
\$2.9-\$6.3
Million

Option 4: Trail Alignment without Foundry Trestle Bridge



Estimated Cost: \$1.6-\$1.7 Million



FEEDBACK NEEDED:



**Preferred bridge
rehabilitation option**



**Is the bridge needed
for the trail?**

PALISADES TROLLEY TRAIL & FOUNDRY TRESTLE FEASIBILITY STUDY: TRAIL CONNECTIONS

NEW BRIDGES: LOCATIONS + DESIGN

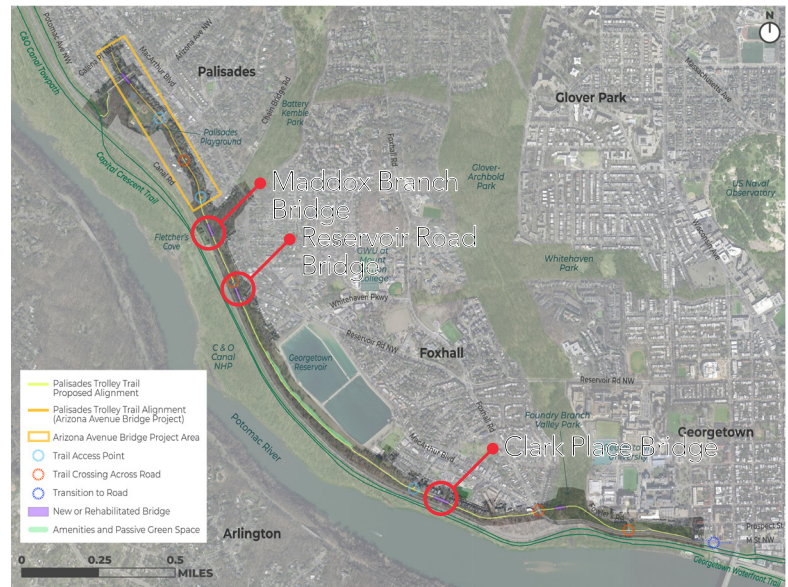
Option 1: Bow String Arch



Option 2: Girder



Option 3: H-Truss



- Bridges accommodate a 8' trail with 2 clear zones on either side (12' total)
- New bridges located within DC/DDOT Right of Way

| Bridge | Length | Estimated Cost |
|----------------|---------|---------------------|
| Clark Place | 156 ft. | \$1.3-\$2.7 Million |
| Reservoir Road | 128 ft. | \$1.1-\$2.3 Million |
| Maddox Branch | 171 ft. | \$1.5-\$3.2 Million |

CAPITAL CRESCENT TRAIL CONNECTION



Estimated Cost:
\$520,000-\$560,000



FEEDBACK NEEDED:



**Preferred bridge
design option for
new bridges**



**Alignment of new
trail connection to
the Capital Crescent
Trail**