

Pedestrian Bridge and Connecting Trail Over Arizona Avenue, NW

Public Meeting #2



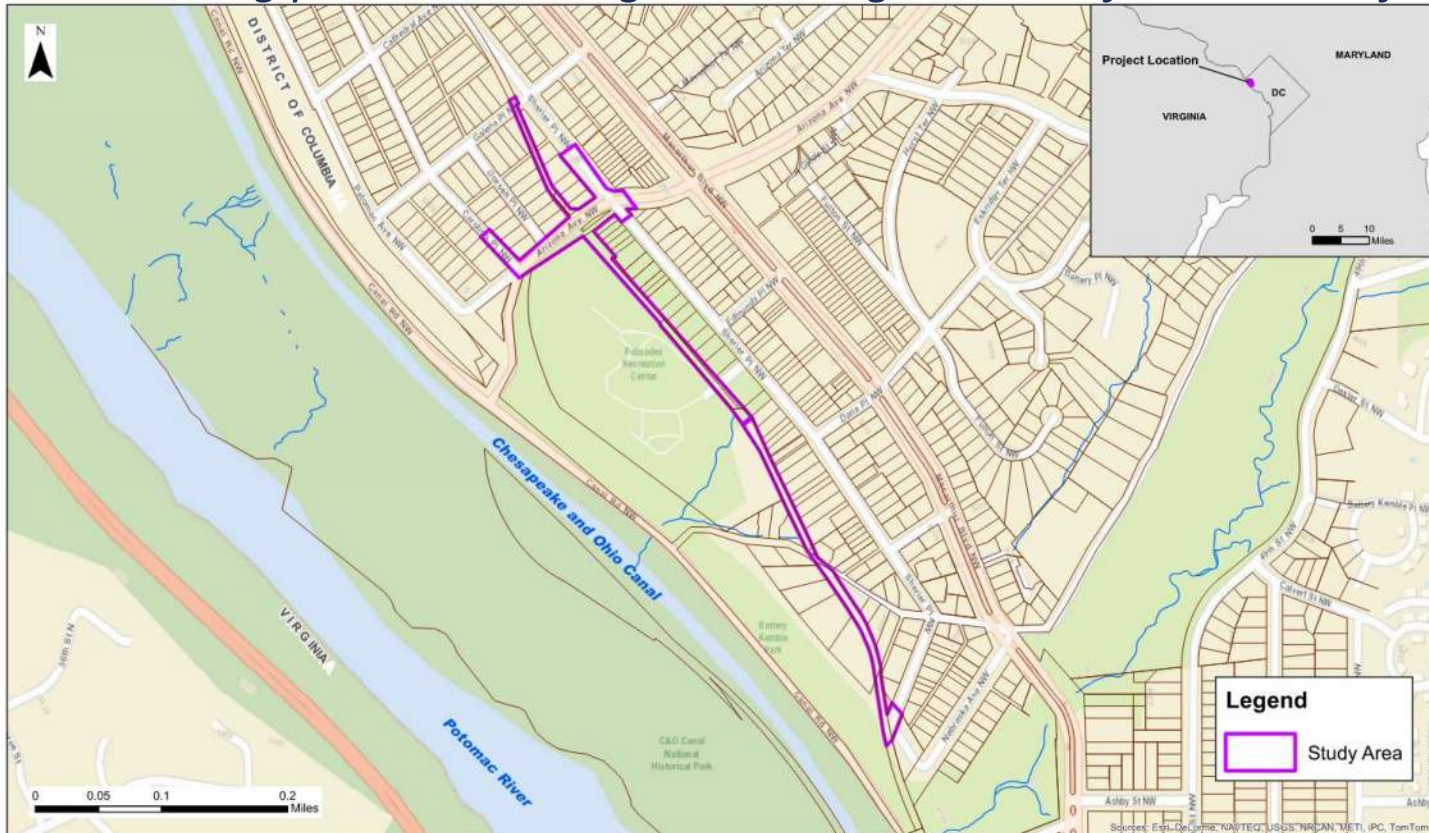
January 15th, 2020

Agenda

- Project Purpose and Limits
- Timeline & Public Feedback
- Preliminary Design
 - Pedestrian Bridge
 - Sidewalks & Pedestrian Crossings
 - Aesthetic Treatments – Ramp and Railings
 - Plantings
 - Trail
- Final DDOT Recommendations
- Next Steps
- Questions

Purpose and Project Area

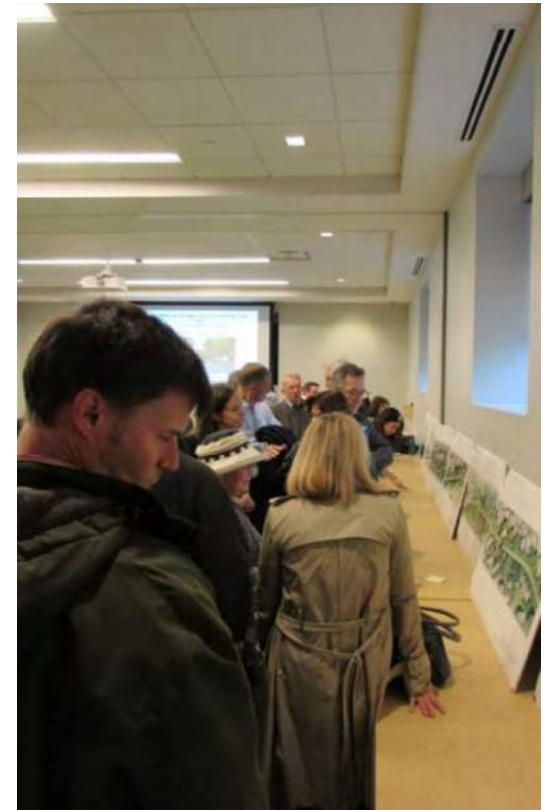
The purpose of the project is to rehabilitate the existing pedestrian bridge over Arizona Avenue NW and to improve the connecting trail to provide greater community connectivity to the Palisades Recreation Center. The project is needed because the existing pedestrian bridge is nearing the end of its service life.



Public Meeting Feedback

April 10, 2018
6:30-8:00 PM
Palisades Library

- 124 total comments were received (23 at the meeting, 101 via email)
 - ~66% support at least some trail improvements
 - ~25% do not support any trail improvement
- Of the 64 residents* who provided comments about the trail and surface:
 - 29 support some level of improvement and changes to trail surface
 - 14 support based on potential for improved drainage/runoff
 - 24 want no change to the trail
 - 9 stated that they don't want "paving"/asphalt



*residency only known for the 101 email comments

ANC, PCA & Citizen Group Feedback

- **PCA** “Middle Ground” draft letter supporting improvements (April 2019)
- **Trolley Trail Preservation Group** letter opposing improvements (Fall 2019)
- **Palisades Family Network** petition supporting improvements (Fall 2019)
- **ANC 3D** letter supporting improvements (November 2019)

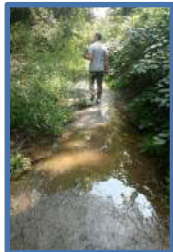
Key Elements of Bridge and Trail Improvements



Bridge and Pedestrian Ramp Rehabilitation and Reconstruction



Multi-Use Trail Designed to Meet Accessibility Guidelines



Stormwater Management and Surface Drainage Improvements



Sidewalk & Crosswalk Safety Improvements



Context Sensitive Design and Landscaping

Pedestrian Bridge



District Department of Transportation

Existing Pedestrian Bridge

- Constructed in Early 1980's
- Vertical Clearance
 - Existing Minimum = 14'-2"
 - AASHTO/DDOT Standard Minimum = 17'-6"
- Structural Condition
 - Recent Inspection (2018)
= 5 (Fair Condition) (0 to 9 scale)
 - Prestressed Concrete Box Beams



Pedestrian Bridge

- Main Span over Arizona Avenue
 - Prefabricated Steel "Box" Truss
 - Safety Handrails at 42"
 - Mesh Panels
 - Concrete Deck
 - Minimal Arch



Prefabricated Steel Trusses

- Parallel Chord “Box” Truss Example



Pedestrian Bridge

- Abutments
 - Modifications
 - Modify/Extend Abutment Using Lightweight Backfill
 - Evaluate Existing Foundations
 - Repair Existing Defects
 - Spalls and cracks

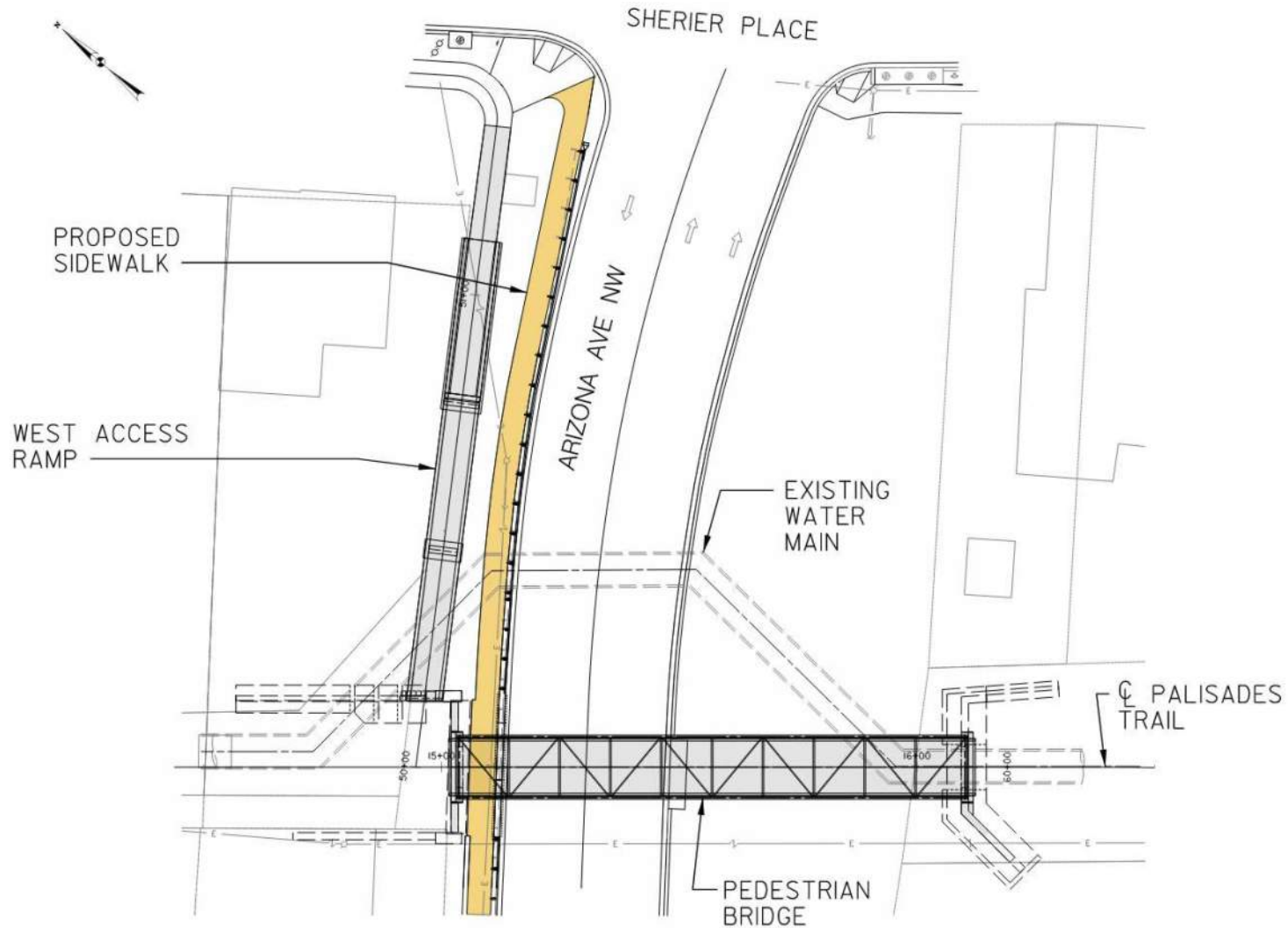


Pedestrian Bridge

- Pedestrian Access Ramp
 - Replace Existing West Ramp Structure
 - Design Follows Accessibility Guidelines
 - Raised Trail Profile = Longer Ramp
 - Evaluated New Ramp on East Side of Arizona Ave.

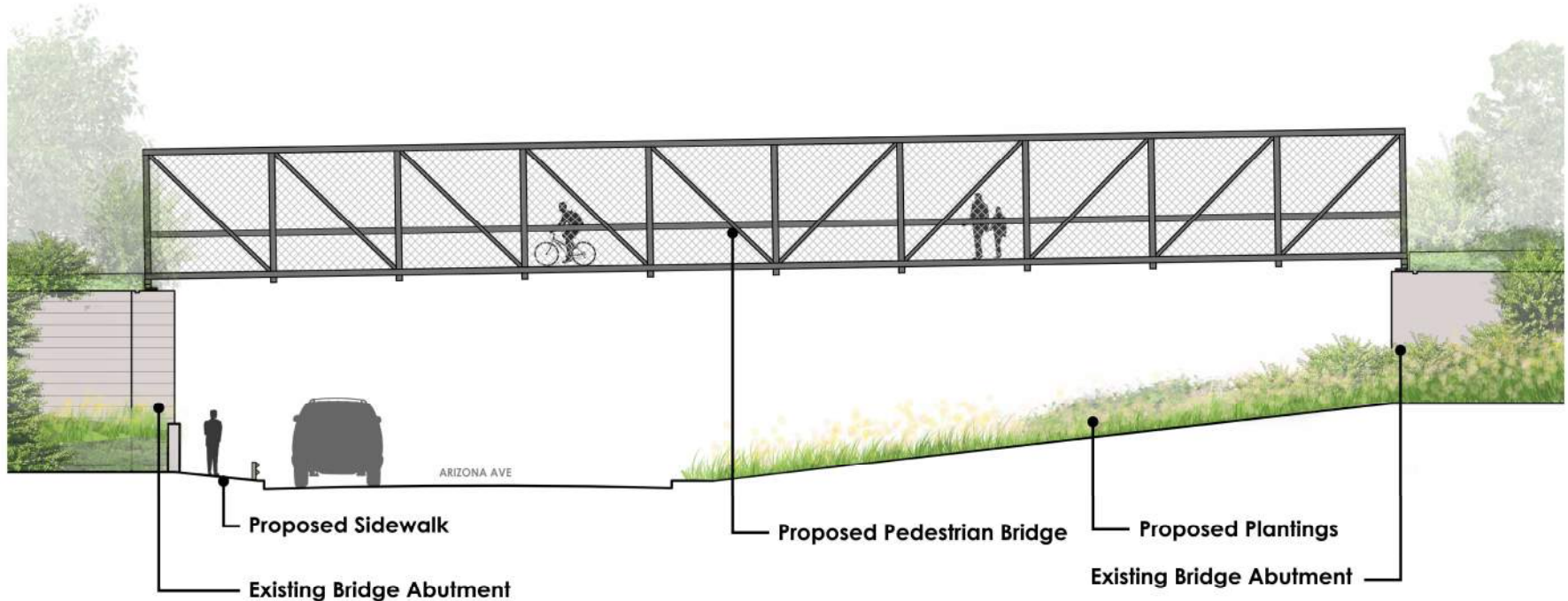


Proposed Bridge & West Access Ramp

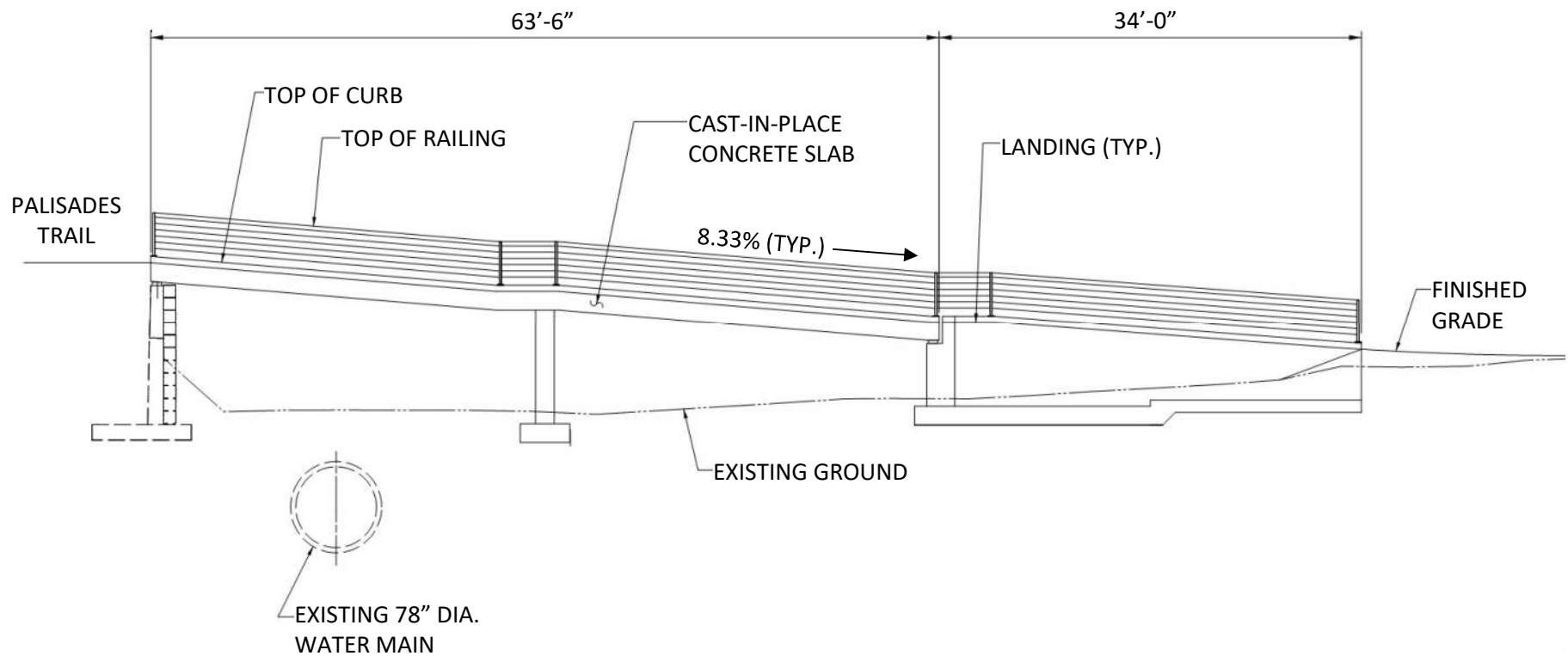


Preliminary Design

- View from South Side of Bridge



Preliminary Design



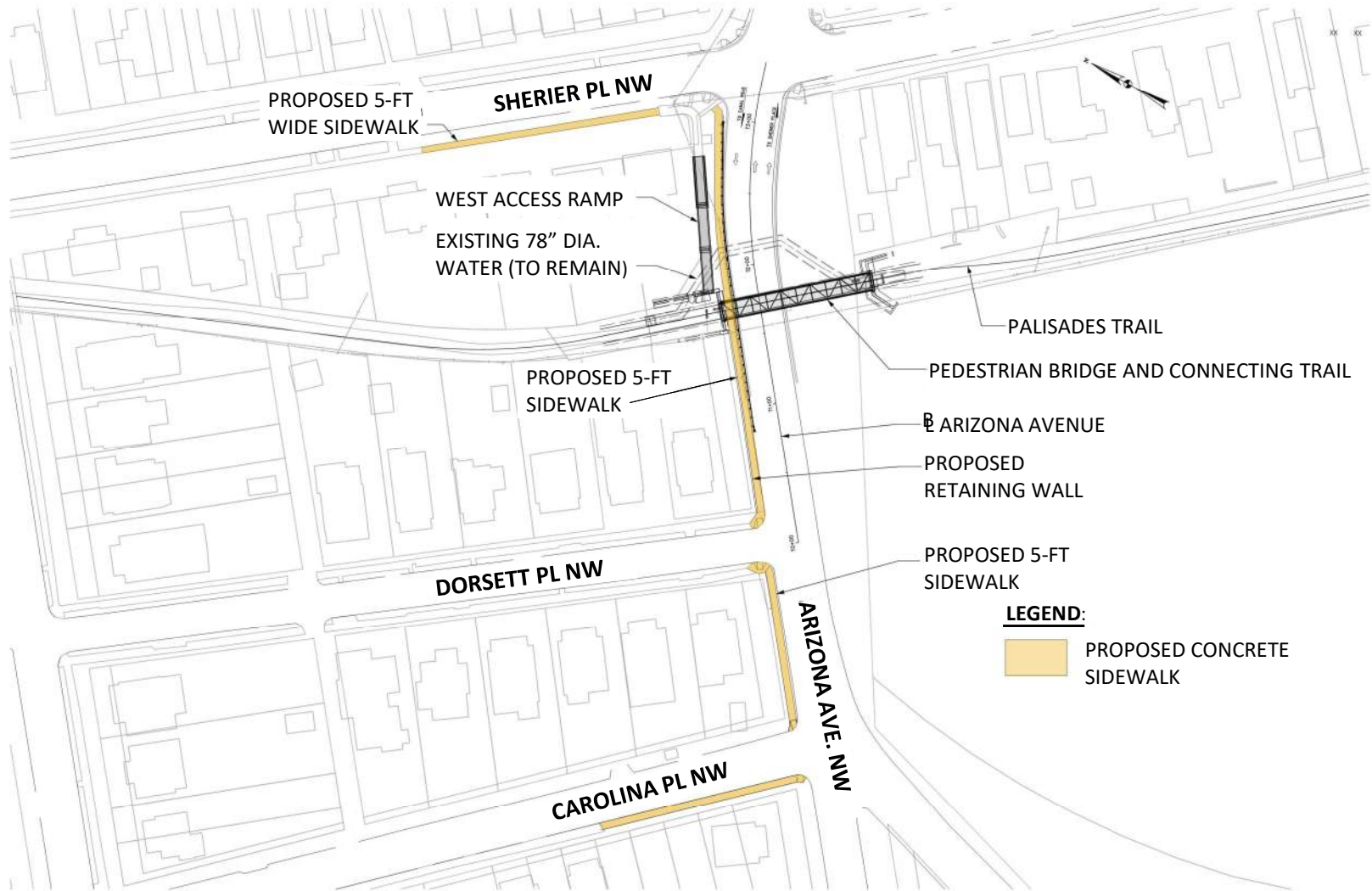
WEST RAMP – ELEVATION

Sidewalks & Pedestrian Crossings

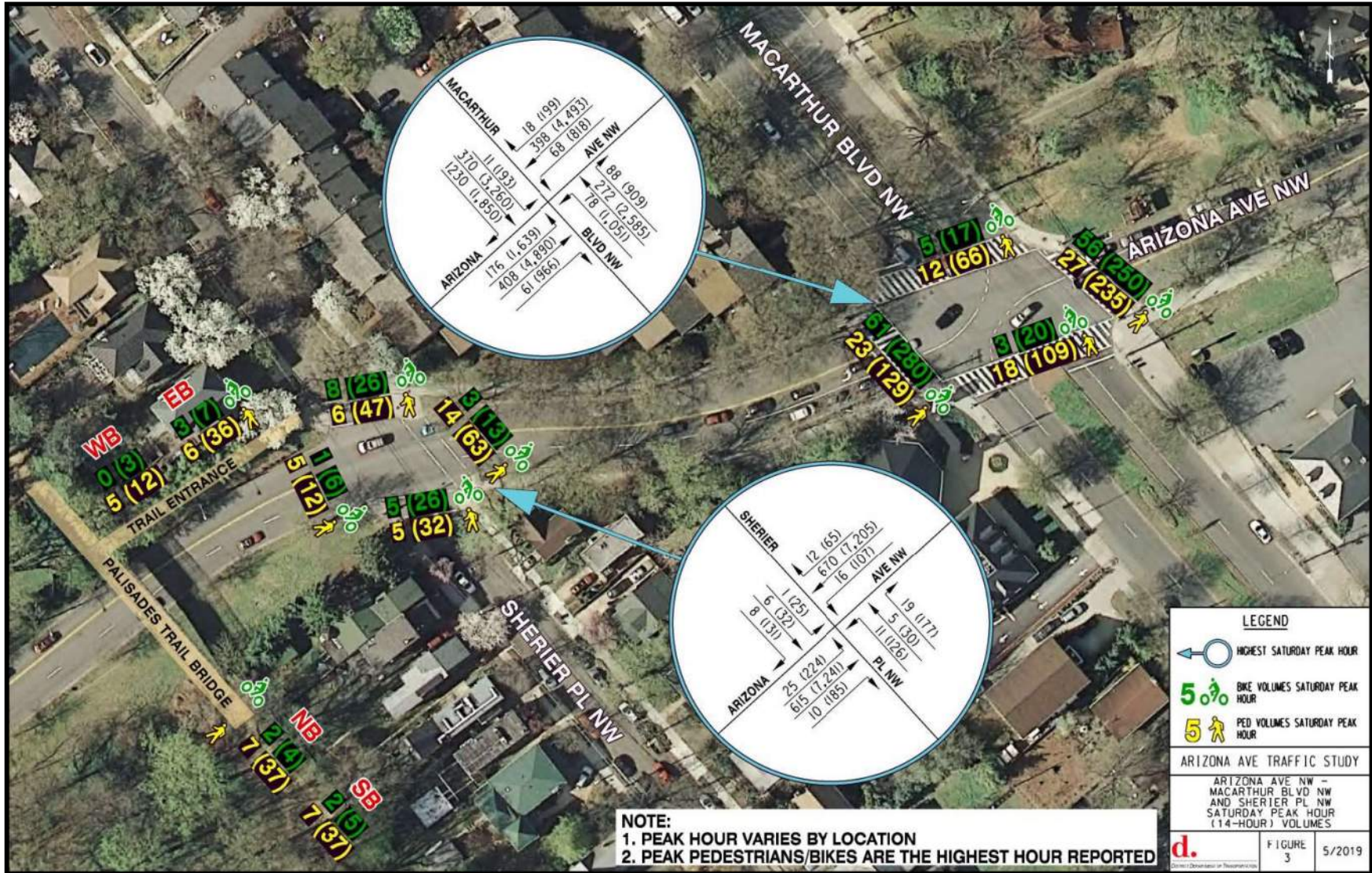


District Department of Transportation

Proposed Sidewalks



Traffic & Pedestrian Signal Study





Pedestrian and Bicycle Volumes

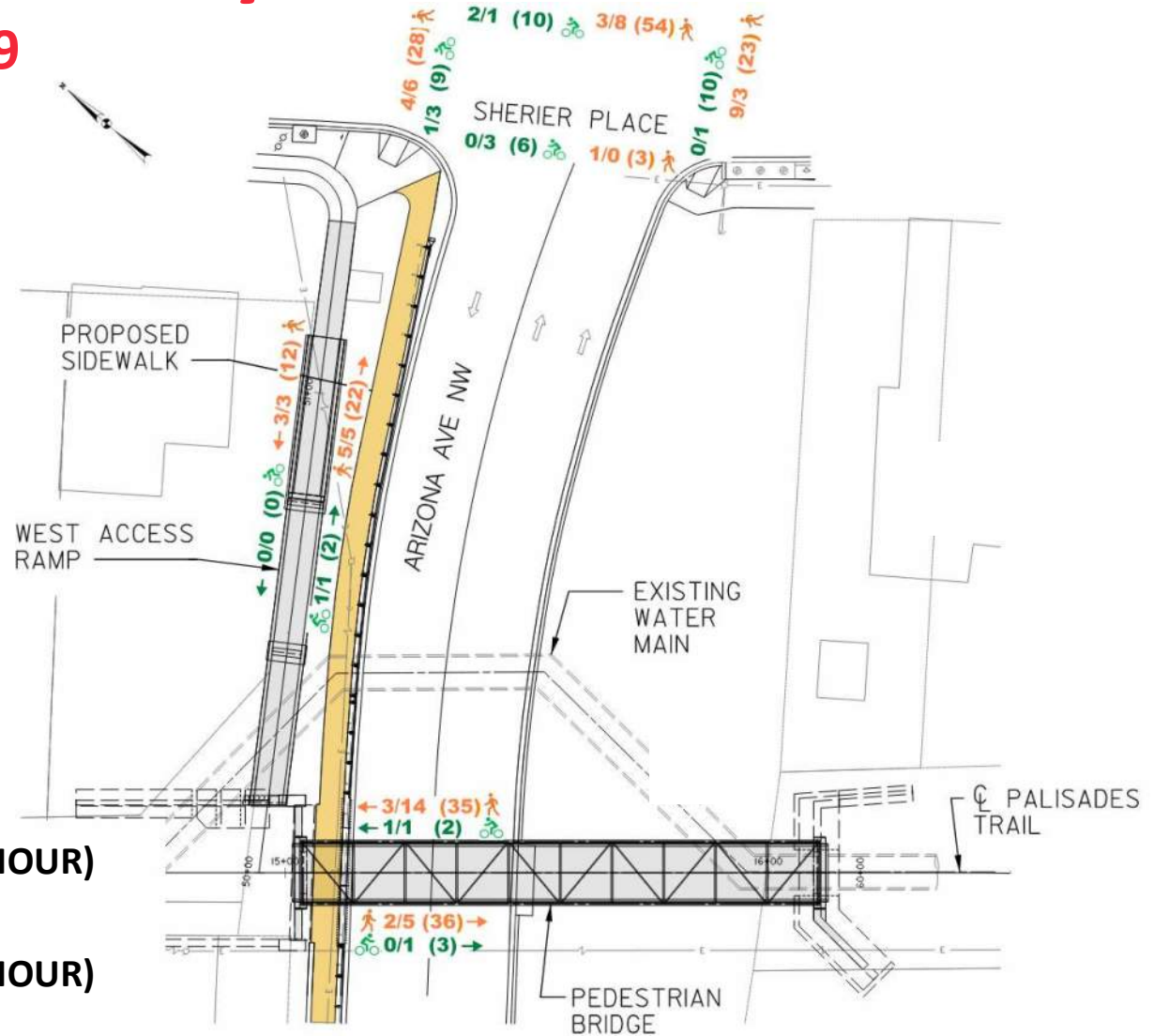
THURSDAY 05-16-2019

14-HOUR COUNTS

- 71 pedestrians and 5 bicyclists on pedestrian bridge
- 34 pedestrians and 2 bicyclists on bridge ramp
- 57 pedestrians and 16 bicyclists crossed over Arizona Avenue at Sherier Place
- **No pedestrians or bicyclists were observed crossing Arizona Avenue to access pedestrian bridge**

LEGEND:

- 
 • AM/PM PEAK HOUR (14-HOUR) PEDESTRIAN VOLUMES
- 
 • AM/PM PEAK HOUR (14-HOUR) BICYCLE VOLUMES

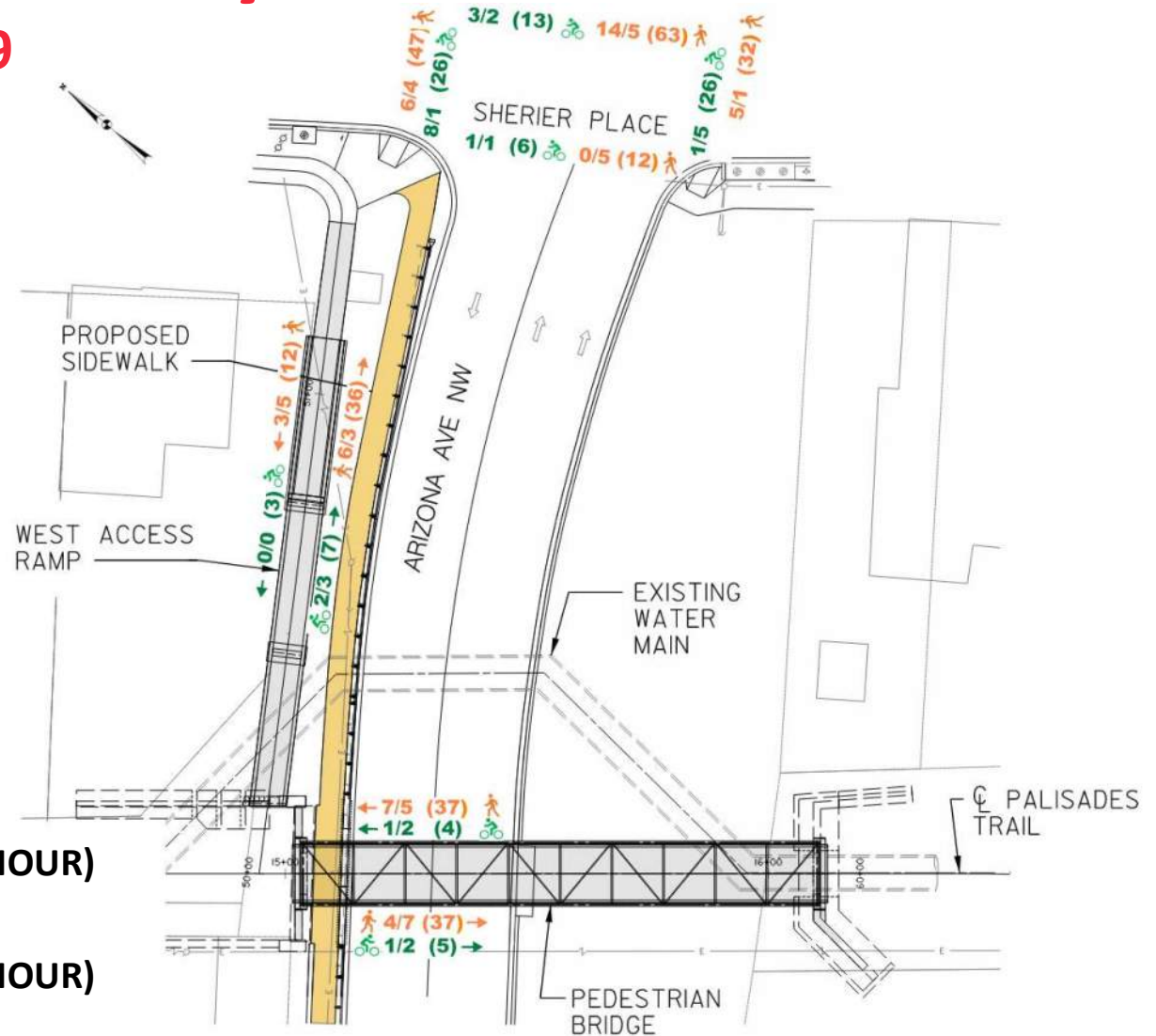


Pedestrian and Bicycle Volumes

SATURDAY 05-18-2019

14-HOUR COUNTS

- 74 pedestrians and 9 bicyclists on pedestrian bridge
- 48 pedestrians and 10 bicyclists on bridge ramp
- 75 pedestrians and 19 bicyclists crossed over Arizona Avenue at Sherier Place
- **No pedestrians or bicyclists were observed crossing Arizona Avenue to access pedestrian bridge**



LEGEND:



- AM/PM PEAK HOUR (14-HOUR) PEDESTRIAN VOLUMES
- AM/PM PEAK HOUR (14-HOUR) BICYCLE VOLUMES

Traffic Study Results

- A fully signalized intersection of Arizona Avenue NW and Sherier Place NW does not meet the signal warrants.
- HAWK pedestrian signal meets DDOT requirements.
- Provide improved pavement markings and HAWK pedestrian signal at intersection of Arizona Avenue, NW and Sherier Place, NW.



Aesthetic Treatments Ramp & Railings

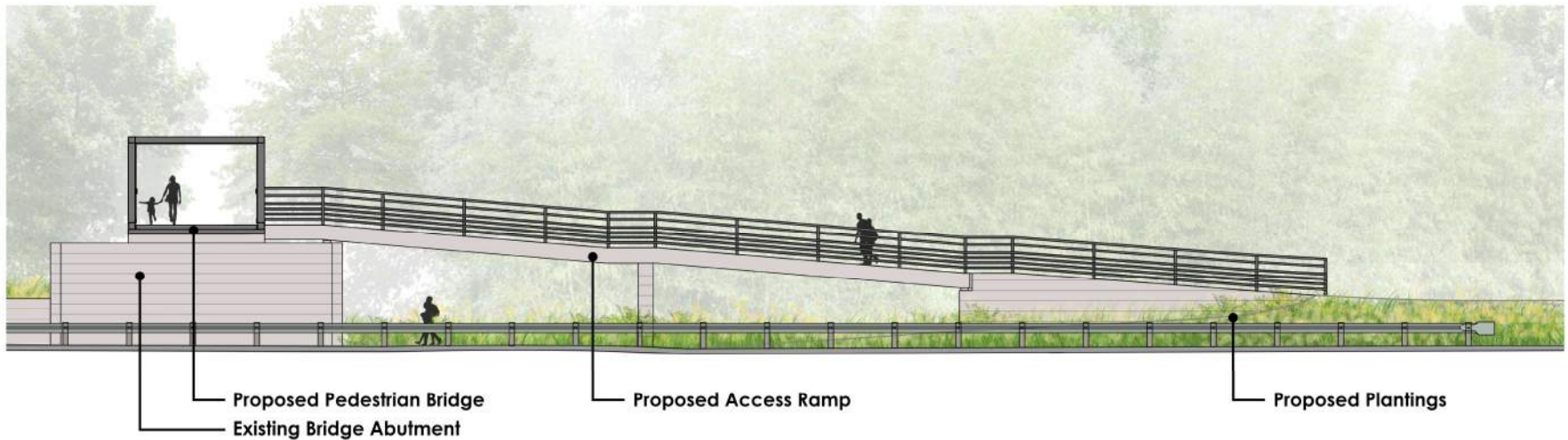


District Department of Transportation

Aesthetic Treatments

- West Ramp

West Side of Arizona Ave NW



Existing Conditions

Aesthetic Treatments

- Railings



Aesthetic Treatments

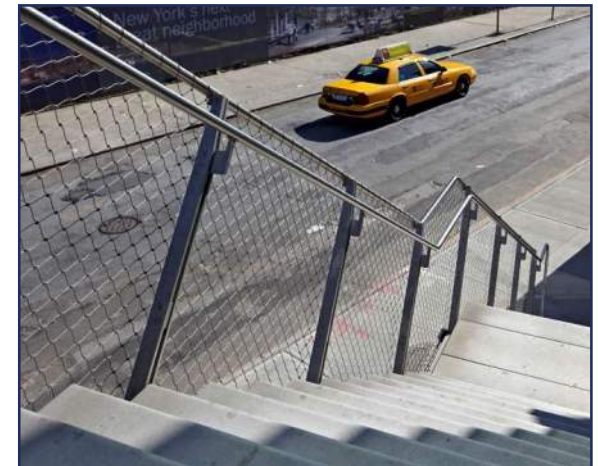
- Railings: Potential Alternatives



HORIZONTAL RAILS



VERTICAL RAILS



METAL INFILL

Plantings

Plantings

- Planting Mix - Sun



TREES:

Cercis canadensis - Eastern Redbud
Amelanchier alnifolia 'Obelisk' - Standing Ovation Serviceberry
Juniperus scopulorum 'Blue Arrow' - Blue Arrow Juniper
Thuja occidentalis 'Smaragd' - Arborvitae

STRUCTURAL / ANCHOR:

Rhus copallinum - Winged Sumac
Clethra alnifolia - Summersweet

GROUND COVER MATRIX:

Carex amphibola - Creek Sedge
Carex radiata - Eastern Star Sedge
Carex pennsylvanica - Pennsylvania Sedge
Hypericum calycinum - St. John's Wort
Pachysandra procumbens - Allegheny Spurge

FLOWERING ACCENTS:

Liatris spicata - Blazing Star
Eupatorium dubium 'Phantom' - Joe Pye Weed
Achillea 'Coronation Gold' - Yarrow

Plantings

- Planting Mix - Shade



TREES:

Amelanchier laevis- Allegheny Serviceberry
Buxus sempervirens 'Dee Runk'- Dee Runk Boxwood
Thuja occidentalis 'Smaragd'- Arborvitae

STRUCTURAL / ANCHOR:

Baptisia australis- Blue False Indigo
Viburnum acerifolia- Mapleaf Viburnum

GROUND COVER MATRIX:

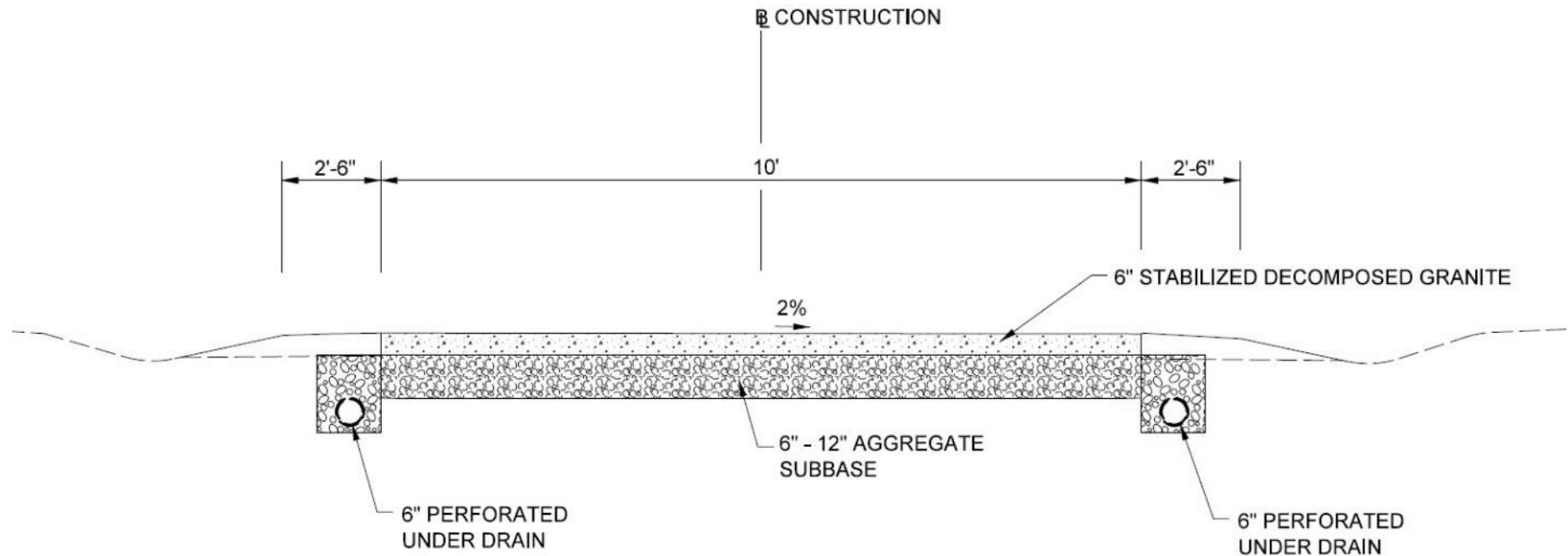
Carex eburnea- Bristle-leaf Sedge
Carex appalachia - Appalachian Sedge
Carex leavenworthii- Lawn Sedge
Hypericum calycinum - St. John's Wort
Pachysandra procumbens- Allegheny Spurge

FLOWERING ACCENTS:

Amsonia tabernaemontana' Blue Ice'- Amsonia Blue Ice
Galium oderatum- Sweet Woodruff

Trail

Trail Typical Section



TYPICAL SECTION

PALISADES TRAIL
N.T.S.

Trail Surface



*STABILIZED DECOMPOSED GRANITE
(Vendor Photo)*

Final DDOT Recommendations & Next Steps

Final DDOT Recommendations

- **Trail Limits** – Galena Pl. to Sherier/Nebraska Ave.
- **Replace Pedestrian Bridge (Steel Box Truss) & West Access Ramp**
- **Recommending to install HAWK Pedestrian Crosswalk Signal**
- **Install Sidewalk Improvements** on Arizona Avenue, Carolina Place and Sherier Place
- **Use Stabilized Decomposed Granite Trail Surface**

Next Steps

- Proceed to Phase 2 - Final Design
 - 65%, 90%, Final Plan Submissions
 - Public Meeting at 90% Submission
 - Bid Advertisement and Construction

Questions

Thank you!

Zahra Dorriz

Zahra.dorriz@dc.gov

202-671-4584

Jennifer Koch

jenniferk@rhiplaces.com

703-683-7447x134

Project Website:

<https://ddot.dc.gov/page/reconstruction-and-rehabilitation-pedestrian-bridge-and-connecting-trail-arizona-avenue-nw>

The logo for the District Department of Transportation, featuring a stylized lowercase 'd' with a dot.

District Department of Transportation