

# Palisades Trolley Trail & Foundry Trestle Feasibility Study

Public Meeting #1: March 7, 2019

**6:30-7pm**

Registration and Open House/Discussion at Boards

**7-7:30pm**

Presentation

**7:30-8pm**

Open House/Discussion at Boards



# Trail Feasibility Study: Former Glen Echo Trolley Line ROW



## Why Now?

- Trail location proposed since trolley line closed in 1960s and identified on other plans
- Numerous public requests to study trail alignment in recent years
- Responding to WMATA's raze permit of the Trestle Bridge



# Palisades Trolley Trail



- Formerly the Glen Echo streetcar line running from Georgetown to Glen Echo Park
- Could provide pedestrians and bicyclists a connection between Georgetown and the Palisades
- Opportunity to address condition and use of Foundry Branch Trolley Trestle Bridge





# Existing Trail Ownership + Access



# Study Purpose

Local DDOT project; feasibility **ONLY**

**1** Determine Purpose + Need



**2** Develop Concepts to Address Purpose + Need



**3** Analyze Costs + Project Risks



**4** Determine Level of Federal Documentation Required for Future Phases of the Project

Preparation of NEPA documentation/Section 106 initialization are **NOT** included

# Key Questions to be Answered by Study

## Foundry Branch Trestle Bridge

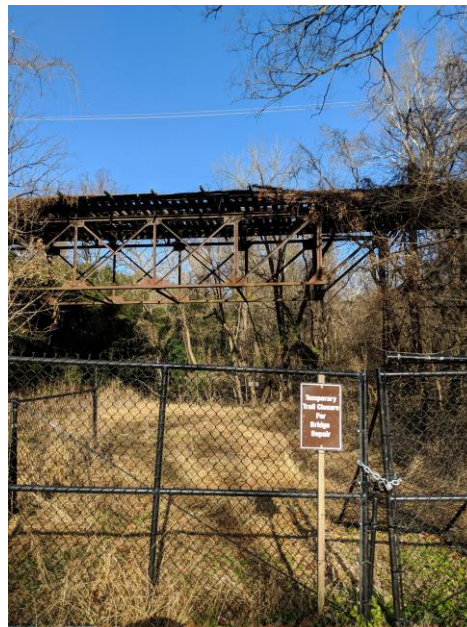
- What is the cost to save the bridge?
- Can the bridge be removed from a historic resources perspective?
- What are the existing and future liabilities associated with the bridge?

## Trail

- What need is the trail serving? Is it warranted from a transportation perspective?
- Should the trail be built without the Foundry Branch Trestle Bridge?
- Is there community support for the trail?
- How will the trail connect into the surrounding neighborhoods and other trails?



# Community Concerns



- Preservation of natural environment
- Trail surface
- Erosion Issues along the trail
- Trail traffic/noise
- Private residences abutting the trail
- Connections to Capital Crescent Trail and other neighborhood amenities
- Preservation of the Foundry Branch Trestle Bridge



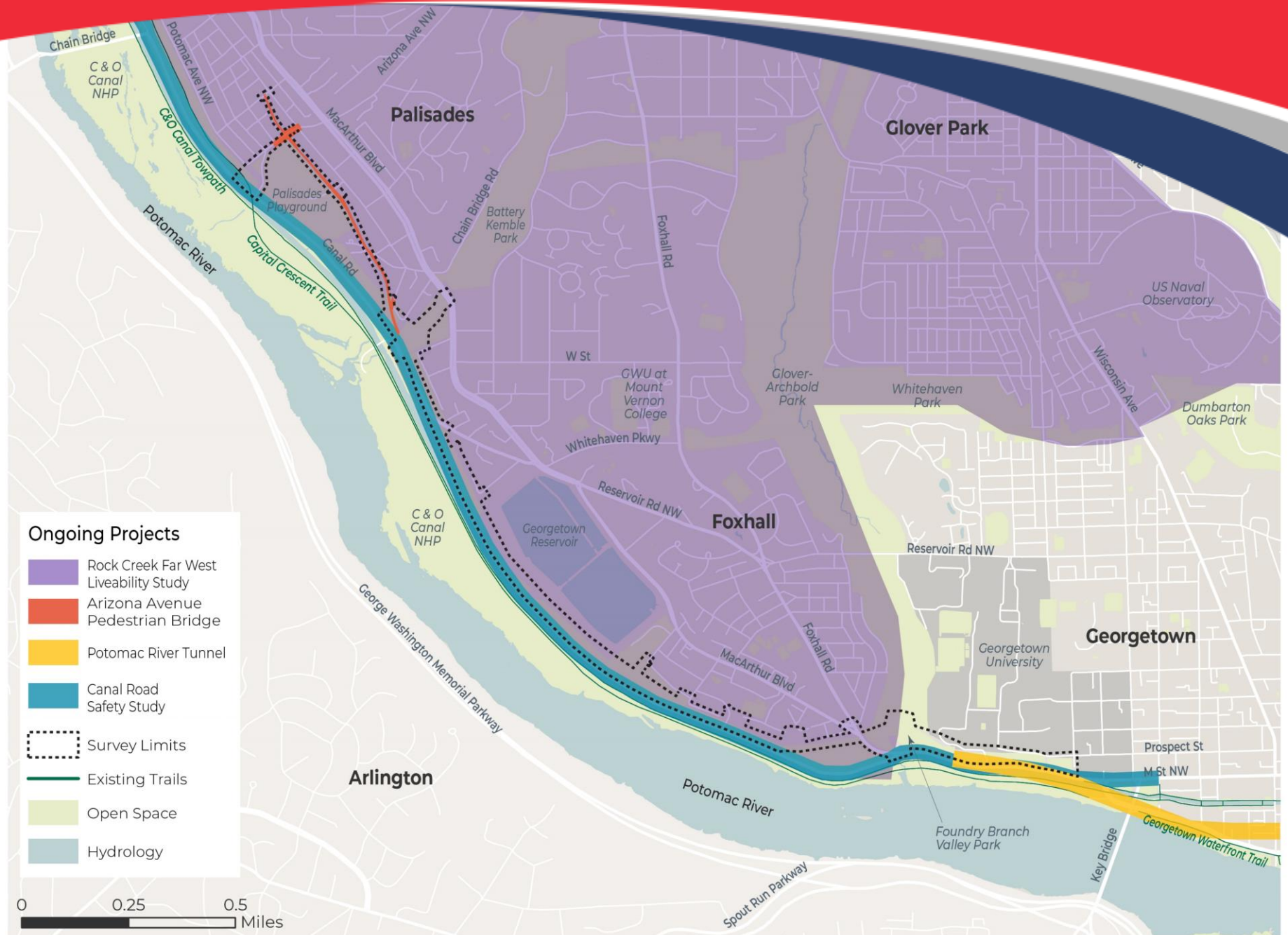
# Potential Opportunities



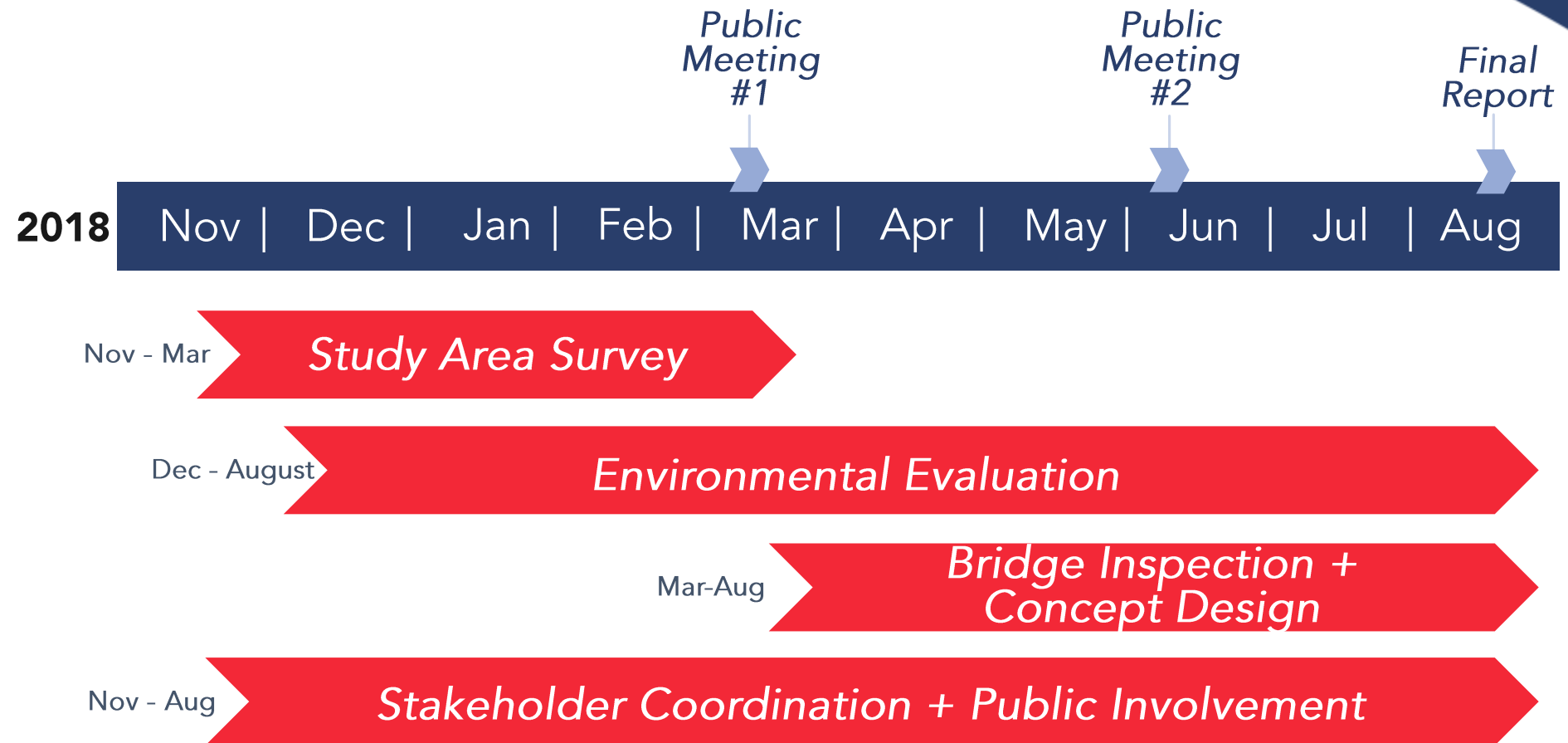
- Connect Palisades and Foxhall residents to Georgetown/downtown via a multi-use trail facility
- Connect to the Capital Crescent Trail/C&O Canal Towpath
- Rehabilitate the Foundry Trestle Bridge for use as a trail
- Create new trail crossings at Clark Place, Reservoir Road, and Maddox Creek



# Coordination with Other Projects



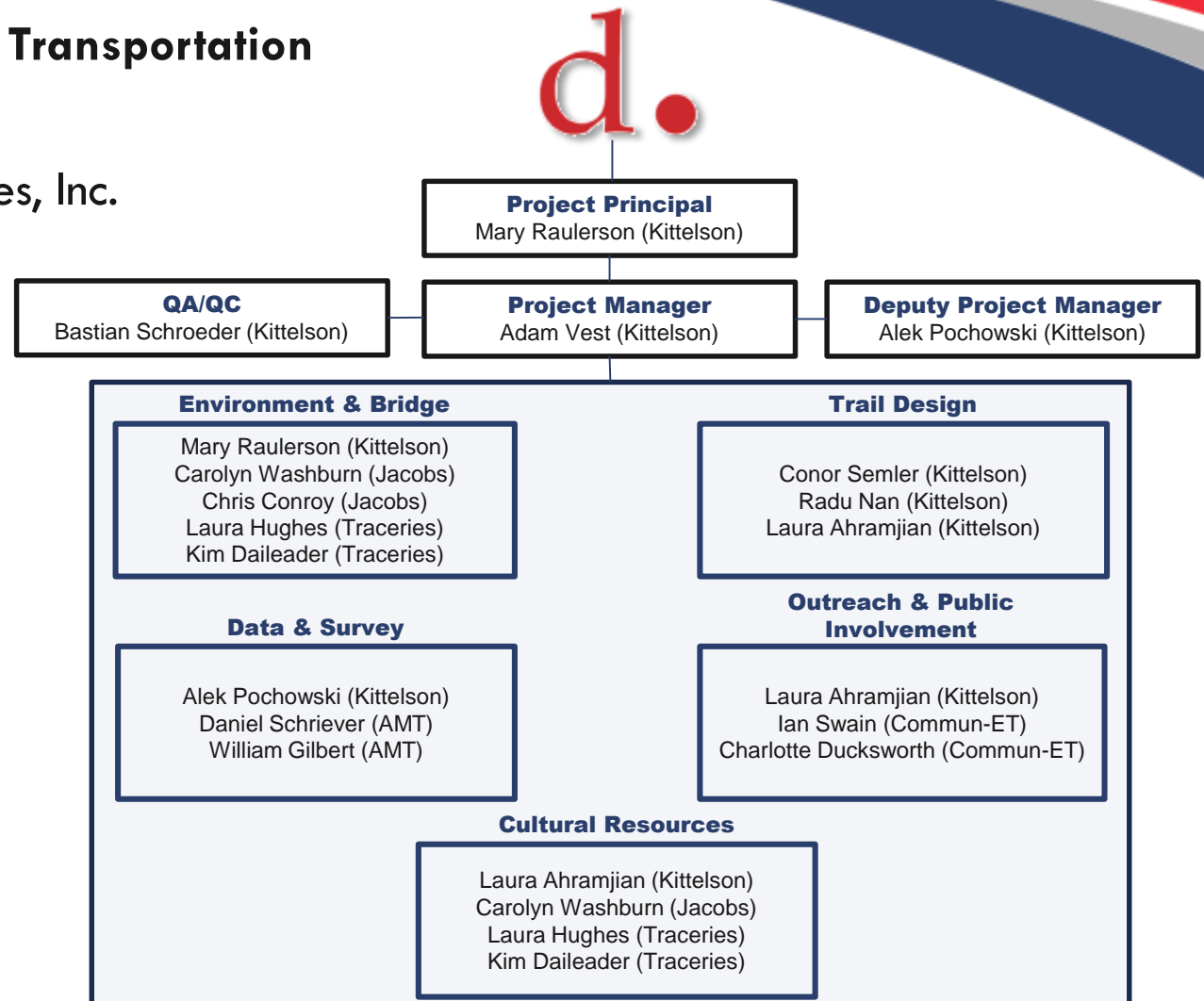
# Study Scope + Schedule





## District Department of Transportation Consultants

- Kittelson & Associates, Inc.
- Jacobs
- AMT, LLC
- Commun-ET
- EHT Traceries





## **STUDY CONTACT:**

**Michael Alvino** at DDOT  
[michael.alvino@dc.gov](mailto:michael.alvino@dc.gov)  
202.671.1321

## **TAKE THE SURVEY:**

<https://www.surveymonkey.com/r/TROLLEYTRAIL>

## **STAY INFORMED:**

<https://ddot.dc.gov/page/palisades-trolley-trail>