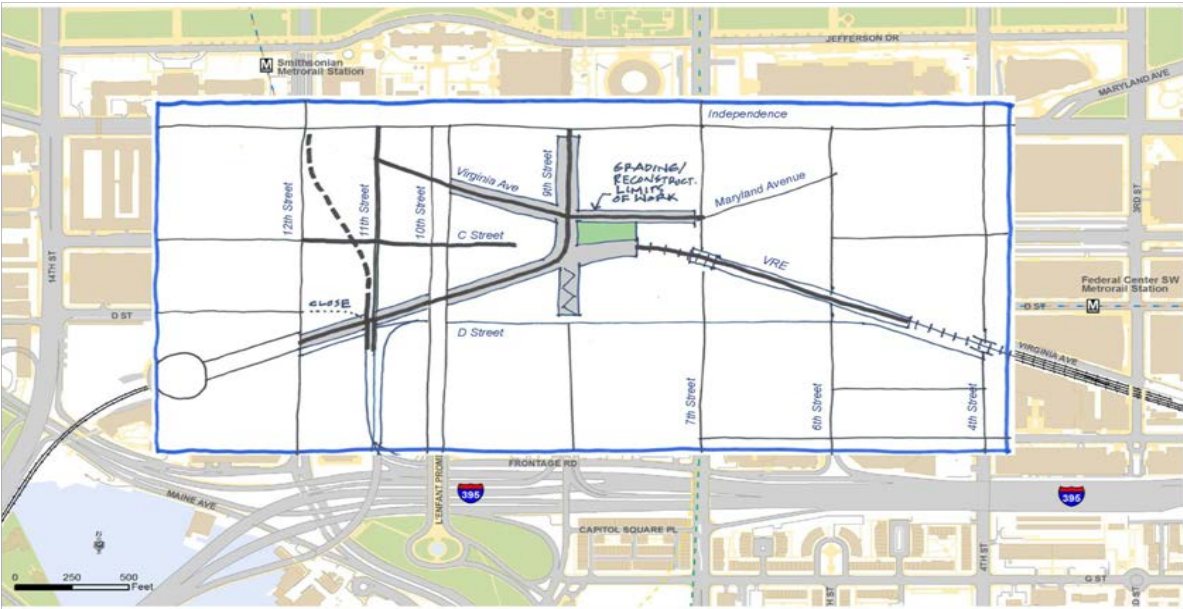
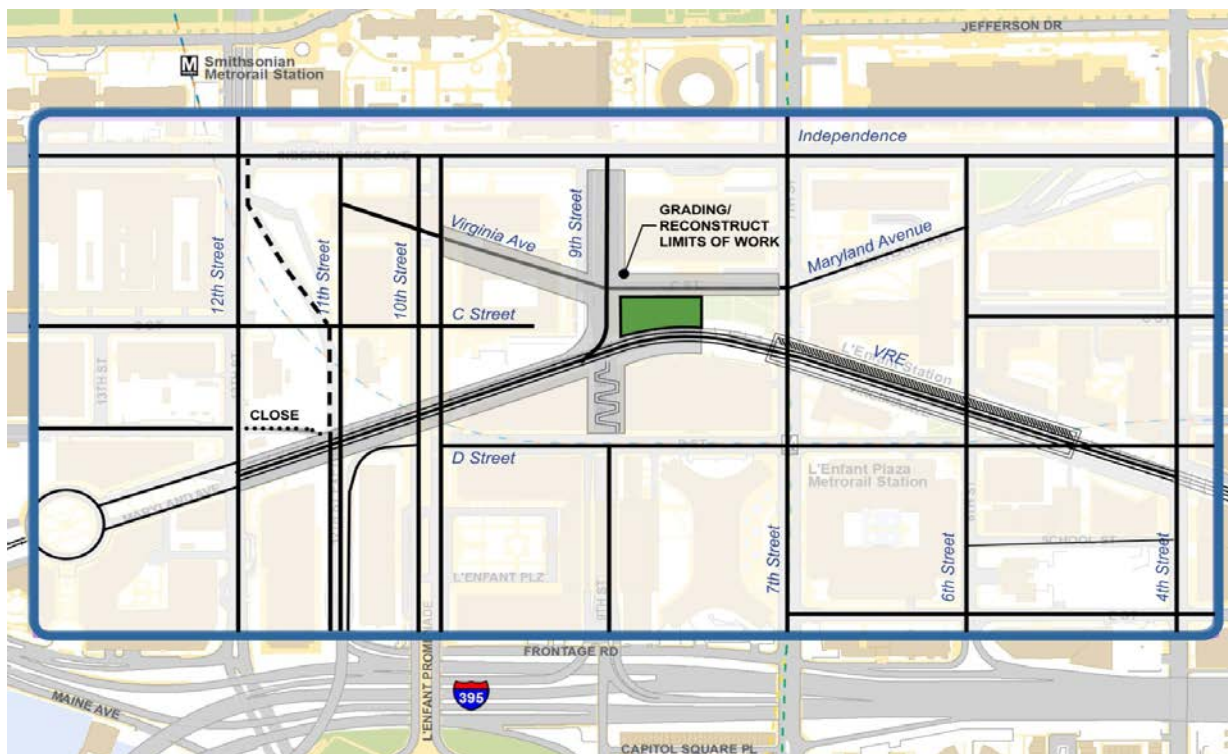


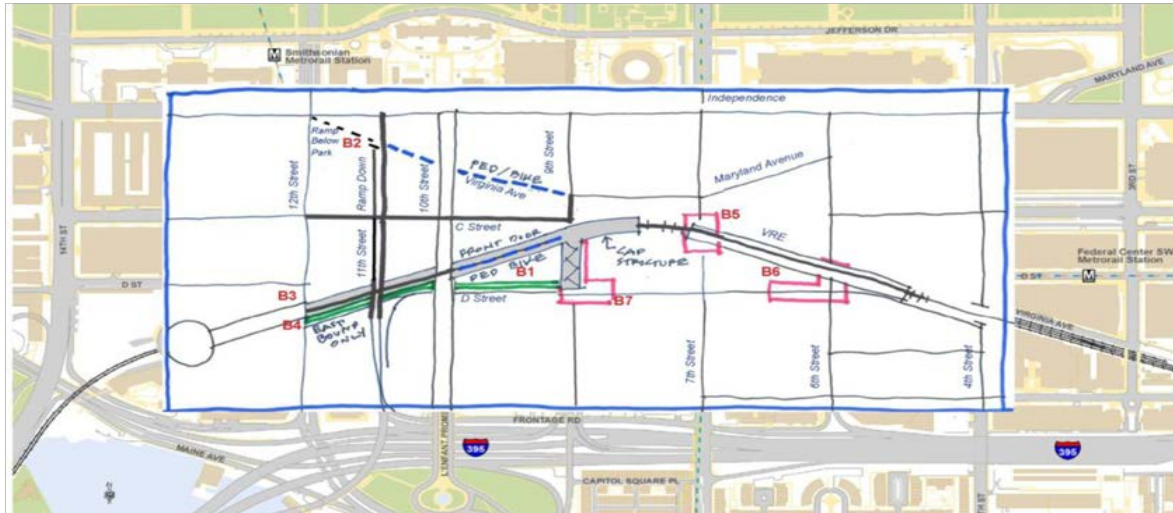
Maryland Avenue Transportation Study - Option A



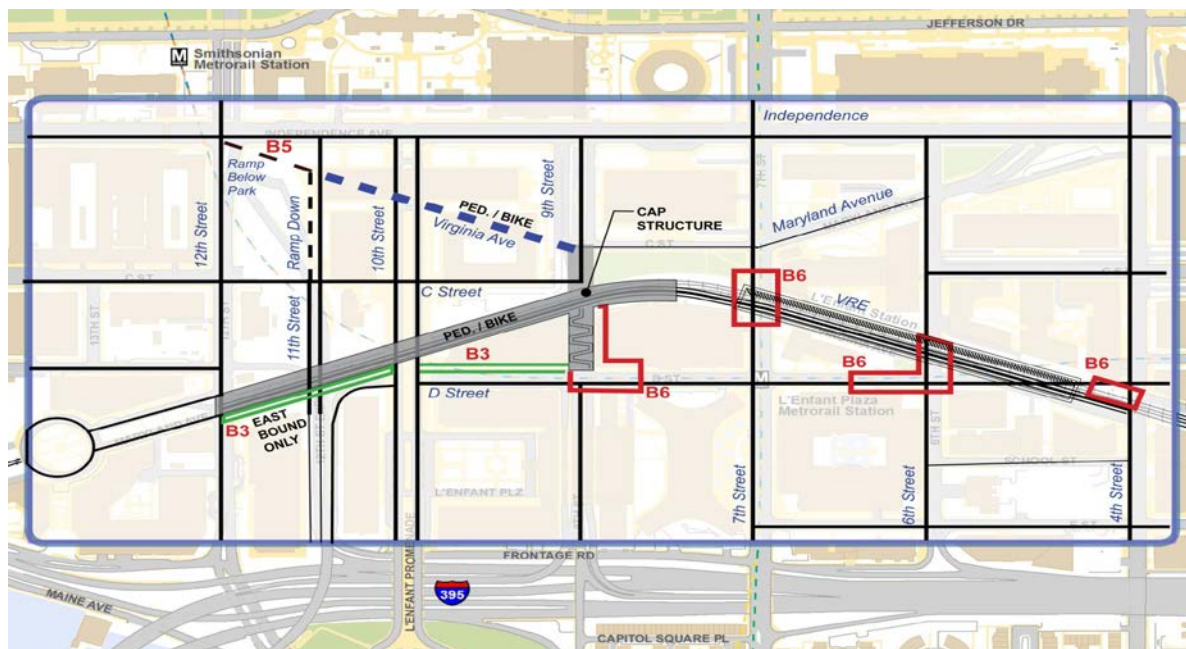
- Re-establish Maryland Avenue SW from 9th to 12th Street to provide east-west connection for all modes
- Re-establish Virginia Avenue SW to provide enhanced east-west connections
- Re-establish C Street SW from west of 9th to 12th Streets SW
- Signalize intersection at 12th Street Expressway ramp and D Street SW for better traffic flow and safer pedestrian crossing
- 12th Street Expressway ramp will remain
- 12th Street Expressway tunnel portal begins south of C Street SW
- Create center platform for VRE service



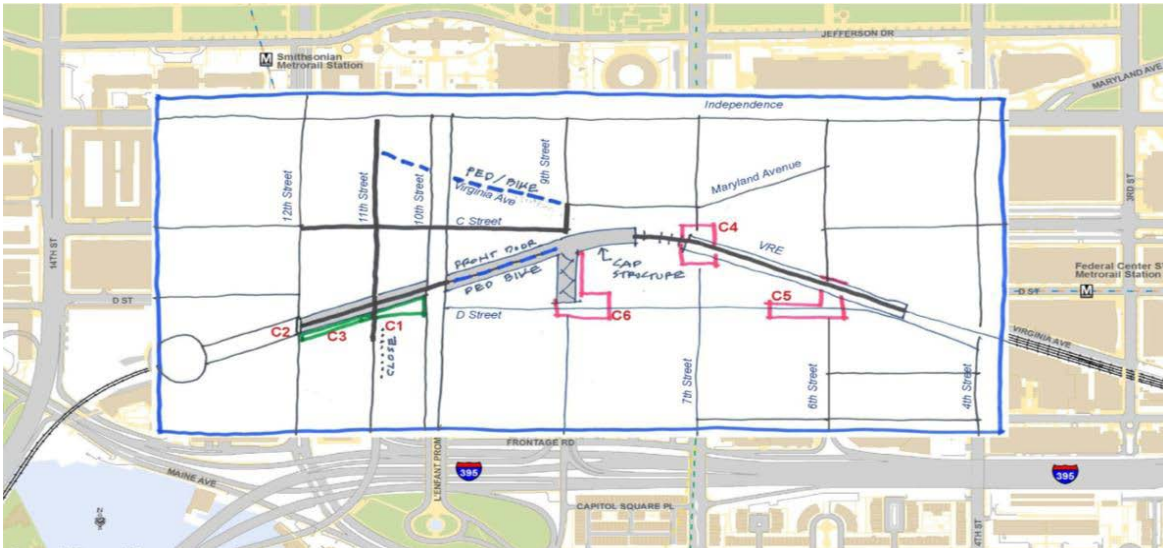
Maryland Avenue Transportation Study - Option B



- Redirect east-west pedestrian activity to Maryland Avenue SW
- Relocate the 11th Street SW portal into the 12th Street tunnel to just north of C Street
- Traffic control at 12th Street and Maryland Avenue SW
- Re-establish Virginia Avenue SW to provide bicycle and pedestrian access only
- Re-establish C Street SW to provide vehicular access and east-west connection
- Re-establish Maryland Avenue SW to provide only pedestrian and bicycle access between 9th and 10th Streets SW
- Close westbound D Street SW between 10th and 12th Streets SW; improve pedestrian and bicycle connections and redirect east-west pedestrian activity to north side of D Street SW Widen CSX bridge underpass at 7th Street SW to provide wider sidewalks, more lighting and landscaping to accommodate better access for pedestrians
- At 7th Street SW add two pedestrian connections to transit (connect commuter rail above, surface transit and Metrorail below)
- Between 6th and 7th Streets SW, expand the Metrorail pedestrian tunnel connection to 6th Street SW (connect commuter rail above, surface transit and Metrorail below)



Maryland Avenue Transportation Study - Option C



- Redirect east-west pedestrian activity to Maryland Avenue SW
- Relocate the 11th Street SW portal into the 12th Street tunnel to just north of C Street
- Traffic control at 12th Street and Maryland Avenue SW
- Re-establish Virginia Avenue SW to provide bicycle and pedestrian access only
- Re-establish C Street SW to provide vehicular access and east-west connection
- Re-establish Maryland Avenue SW to provide only pedestrian and bicycle access between 9th and 10th Streets SW
- Close westbound D Street SW between 10th and 12th Streets SW; improve pedestrian and bicycle connections and redirect east-west pedestrian activity to north side of D Street SW
- Widen CSX bridge underpass at 7th Street SW to provide wider sidewalks, more lighting and landscaping to accommodate better access for pedestrians
- At 7th Street SW add two pedestrian connections to transit (connect VRE commuter rail above, surface transit and Metrorail below)
- Between 6th and 7th Streets SW, expand the Metrorail pedestrian tunnel connection to 6th Street SW (connect commuter rail above, surface transit and Metrorail below)

