



**RECONSTRUCTION OF
KENNEDY STREET, N.W.
ROADWAY IMPROVEMENT PROJECT**

Public Meeting

January 21, 2020

Kennedy St, N.W. - From 16th St, N.W. To Georgia Ave, N.W.

Georgia Ave, N.W. - From Kennedy St, NW to Longfellow St, N.W.

Ward 4

d.

Agenda

- Team Introductions
- Project Location
- Project Background & Purpose
- Design Illustrations
- Project Summary
- Questions & Answers

Project Location



Background

Project Need, Purpose and Goals



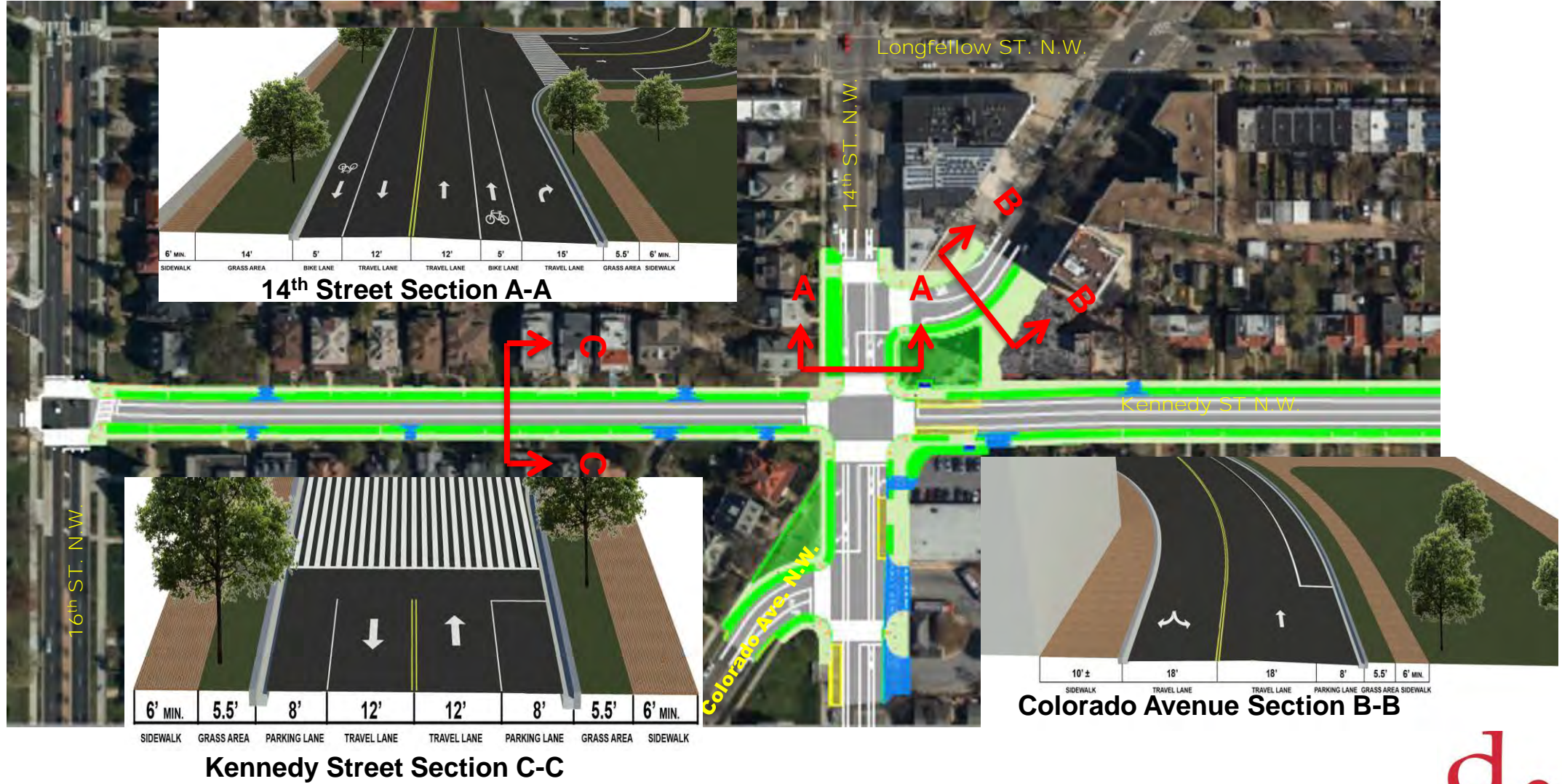
- **Upgrade Roadways** - Pavement reconstruction, Curbing, Sidewalk, and ADA facilities; Relocate Illinois Ave at Georgia; Drainage inlets and pipes, low impact development (LID)/Stormwater Management facilities
- **Improve multi-modal connectivity** - Upgrade bus transit stops & shelters, bicycles and pedestrian movements
- **Incorporate Vision Zero initiative** - Improve driver and pedestrian safety along the corridor
- **Incorporate Livability Study Recommendations** – Upgrade existing and create new landscaped community spaces
- **Upgrade Traffic Signal Control** - Reconfigure 14th St at Kennedy St/Colorado St, Georgia Ave at Kennedy Intersections
- **Install New Traffic Signal Control** - Georgia Ave at Longfellow St intersection

Roadway Illustrations - After



Proposed Roadway Cross Sections

Kennedy Street/14th Street/Colorado Avenue



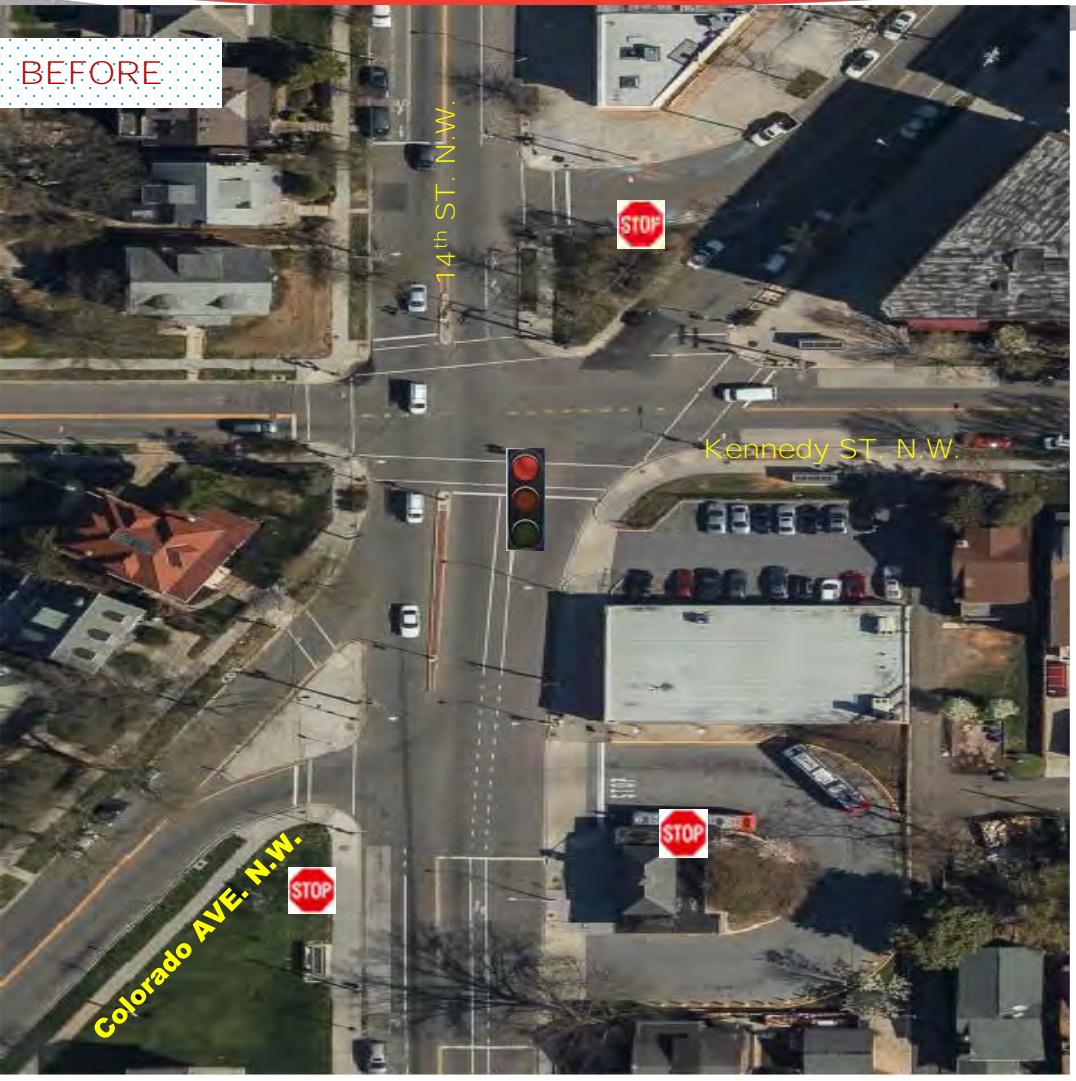
Multimodal Intersection Improvements

★ Focus Intersections



Intersection Illustration – Before & After

Kennedy Street/14th Street/Colorado Avenue



Intersection Illustration – Before & After

Kennedy Street/14th Street/Colorado Avenue

- New inter-connected traffic signals will be installed
- Pedestrian countdown signals will be upgraded
- Bus depot approach will be signal controlled
- Bicycle lanes on 14th Street are continued through the area



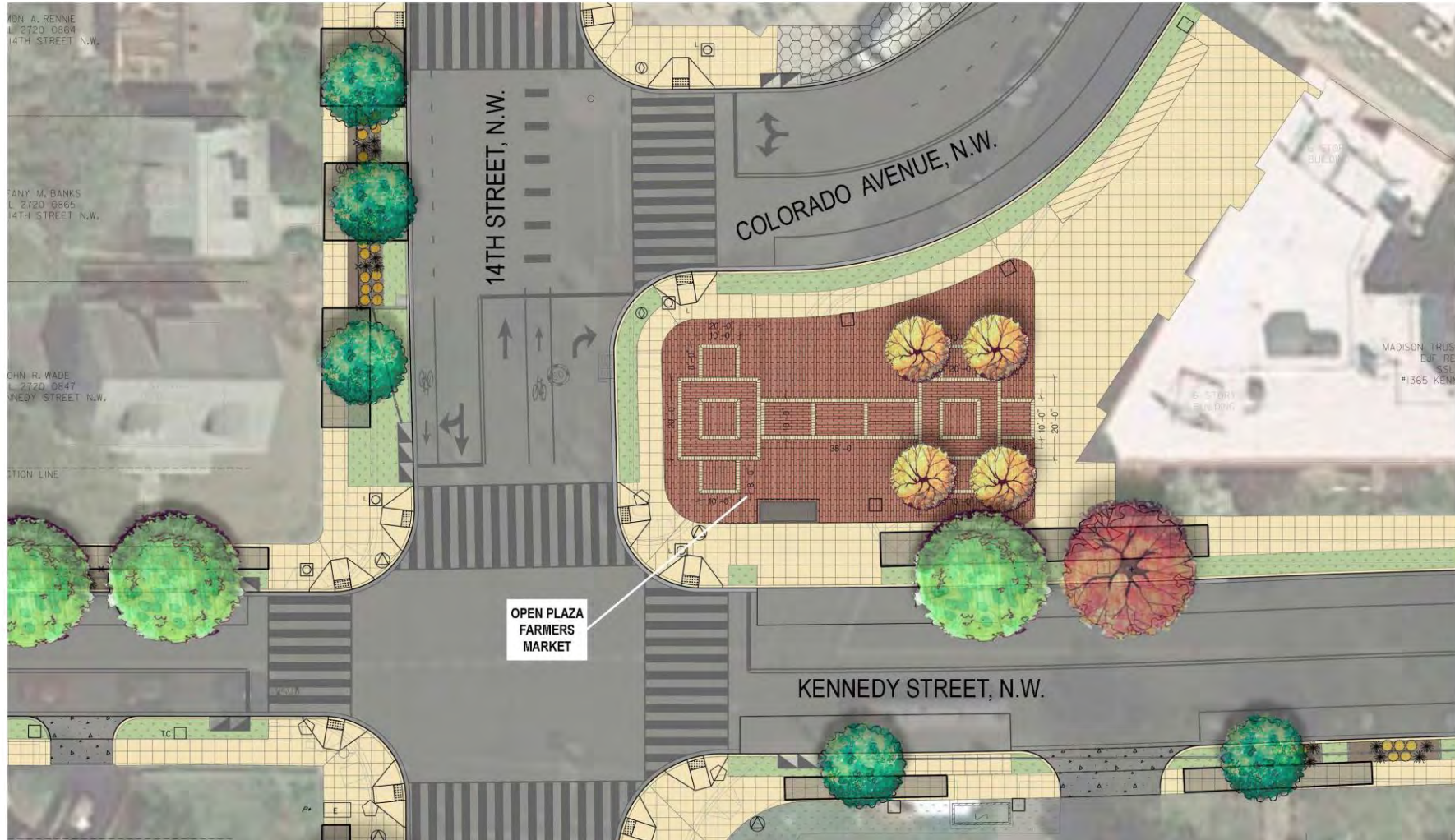
Vehicular Safety, Operation and Circulation Changes

Kennedy Street/14th Street/Colorado Avenue



- Colorado Avenue intersects with 14th Street, south of Kennedy Street at a new traffic signal
- Elimination of existing five-legged intersection improves safety and operation
- Right-angle intersections reduce vehicular turning speed & improve pedestrian safety

Public Space – Kennedy St & Colorado Ave –Community Space



Intersection Illustration – Before & After

Georgia Avenue/Longfellow Street/Illinois Avenue



Traffic Signal Improvements

Georgia Avenue/Longfellow Street/Illinois Avenue

- New traffic signal will be installed at Georgia Avenue & Longfellow Street
- New countdown pedestrian signals will be installed



Traffic Signal Improvements

Georgia Avenue/Longfellow Street/Illinois Avenue

- Relocation of Illinois Avenue
 - Reduce speed of vehicles turning left from Georgia Ave onto Illinois Ave
 - Create more storage space for vehicles turning left onto Illinois Ave
- Left-turn restriction from Illinois Ave onto Georgia Ave
- Left-turn restriction for northbound vehicles on Georgia during peak periods



Public Space – Longfellow St & Illinois Ave



Intersection Illustration – Before & After

Georgia & Kennedy Street



Transit Stop Relocation and Enhancement



- Relocate bus stops on Georgia Avenue to the far side of Kennedy Street to improve pedestrian safety.
- Extend curbs at the Georgia Avenue / Kennedy Street intersection
- Provide more space for transit users and improved amenities

Vehicular Safety, Operation and Circulation Changes

Georgia Avenue & Kennedy Street

- A. Hardened centerline
- B. No Turn on Red signs
- C. Leading pedestrian intervals
- D. Left-turn restriction from Georgia Ave on to Kennedy Street during peak periods

A



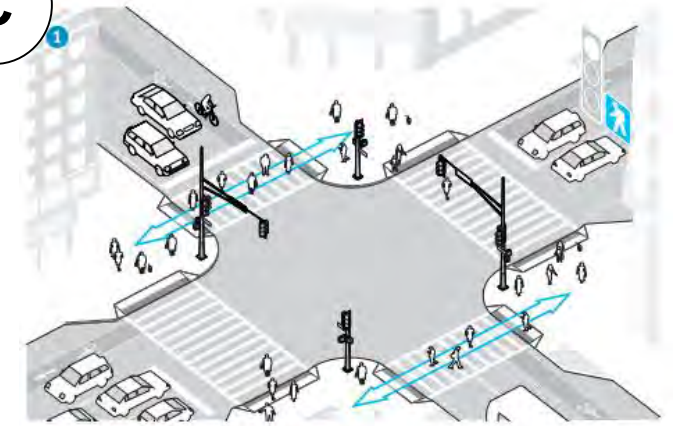
B



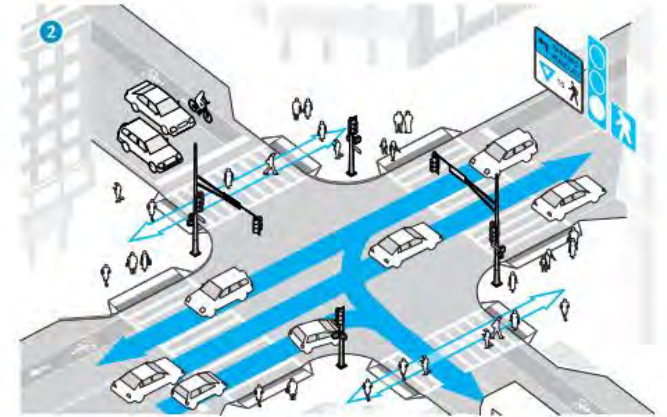
D



C

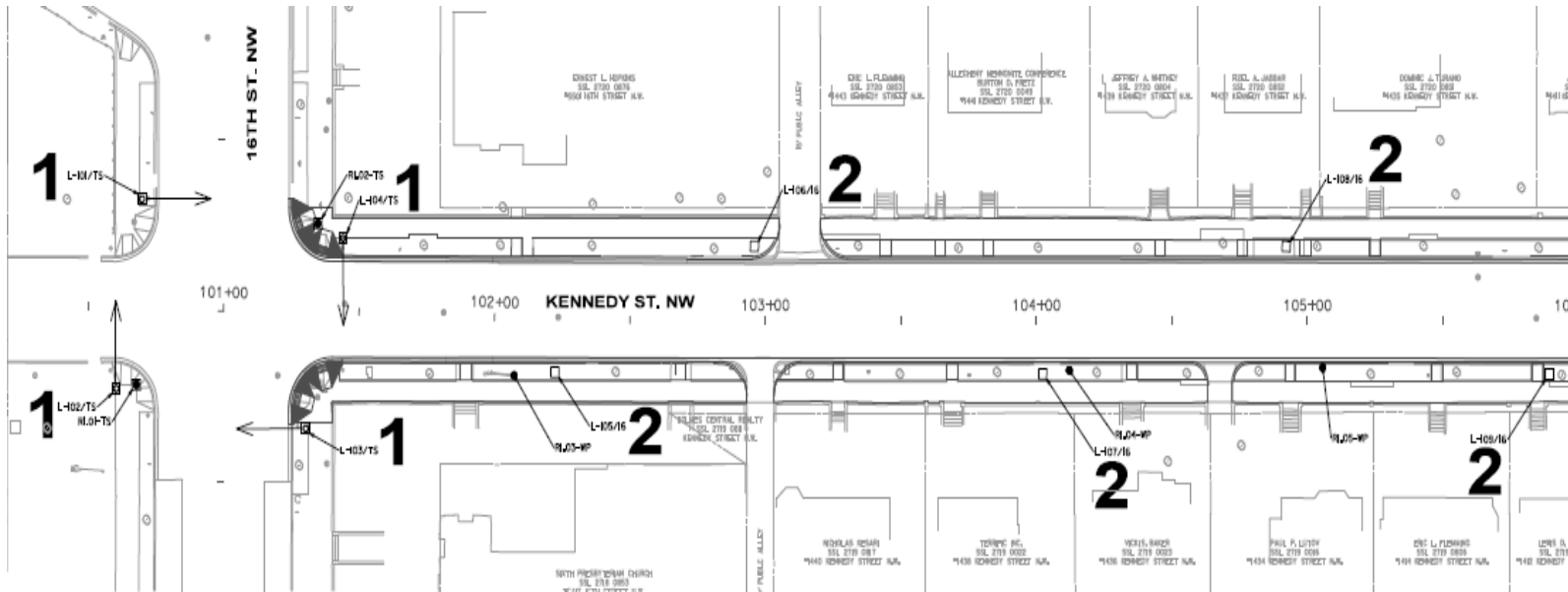


Leading Pedestrian Interval



Vehicle turning permitted

Lighting Improvements



1: Lighting at Intersections



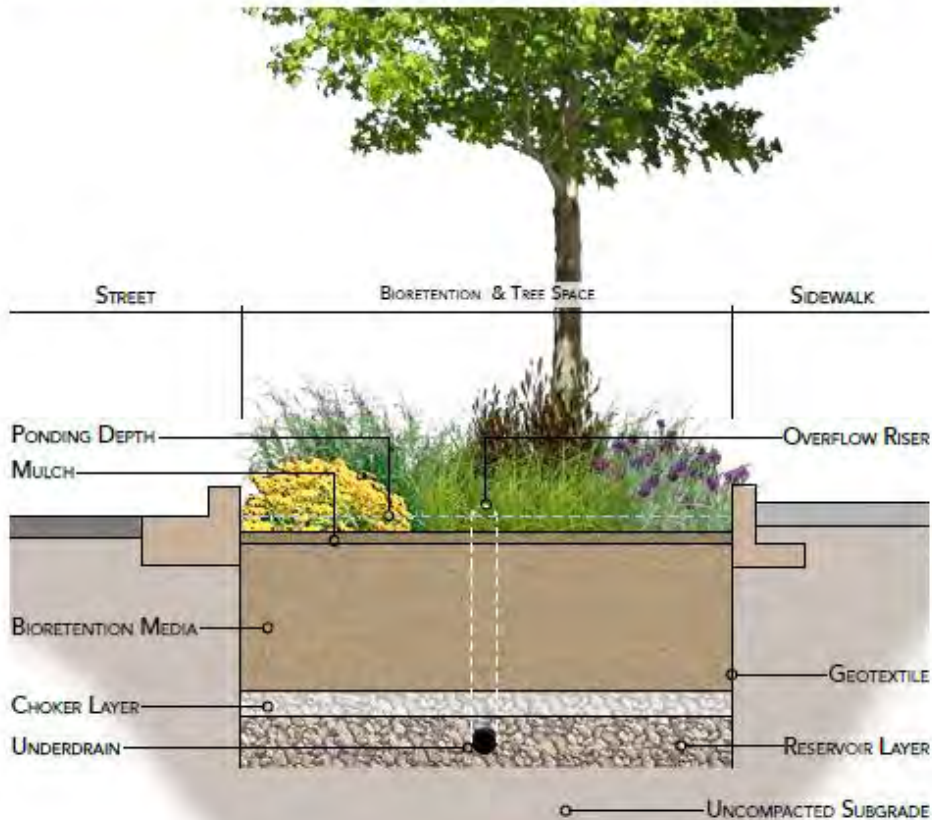
2: Lighting Between Intersections and at Bus Stops

1. New LED street lighting
2. Pedestrian scale lighting
3. Enhanced lighting at pedestrian crossings and bus stop

Streetscape Design

Commitment to Green Infrastructure

BIORETENTION - WHAT'S UNDERNEATH?



Green Infrastructure Features

- Utilize DDOT Standard Green Infrastructure to ensure a uniform appearance
- Maximize the amount of vegetation and native species
- Proposed Low Impact Development (Rain Gardens)
- Permeable Pavers

Project Schedule

- 90% Design Completed
- 100% Design plan complete by Spring 2020
- DDOT to coordinate with key stakeholders throughout design and construction phases
- DDOT will phase construction work not to impact the Farmers Market
- Construction to begin Winter 2020



Contact Us

For more information please contact:

Ghirmay Tesfamichael

DDOT Project Manager

- ghirmay.tesfamichael@dc.gov

Sean Moore

Public Outreach Project Manager

- Sean@thecsmi.com

Questions?



**RECONSTRUCTION OF
KENNEDY STREET, N.W.
ROADWAY IMPROVEMENT PROJECT**

d.