

Rehabilitation for Eastern Avenue, NE

(from New Hampshire Avenue, N.E. to Whittier Street, N.W.)



District Department of Transportation



September 14, 2017

d. Project Location Map

District Department of Transportation

LIMIT OF WORK

DCKA-2013-T-0067
EASTERN AVENUE NW
WHITTIER STREET NW



LIMIT OF WORK

DCKA-2013-T-0067
EASTERN AVENUE NE
NEW HAMPSHIRE AVE. NE

LOCATION MAP

➤ **Roadway Classification/ Geometrics/ Condition**

- Inadequate lane transition (4-lane minor arterial to 2-lane)
- Significant crest/ sag vertical curves
- Concealed driveways; deteriorating pavement and curbs

➤ **Traffic Operations/ Speed**

- Steep grades/ high speeds
- Improper lane use; queuing; no left-turn lane

➤ **Pedestrian/ Bicycle Facilities and Operations**

- Unsafe unsignalized Ped. Crossing; limited sight distance
- No sidewalks or Ped. access to bus stops; non-ADA ramps
- Vision Zero Initiative

➤ **Traffic Control Devices**

- Deteriorated signs; sign clutter; improper sign placement
- Poor lane markings; inadequate intersection lighting

➤ **Drainage**

- Damaged/ clogged inlets (sediment, debris)
- No Stormwater management

➤ **Landscaping/ Visual Appeal/ Neighborhood Appearance**

- Unhealthy trees; improper pruning/ maintenance.
- Substandard street lighting.

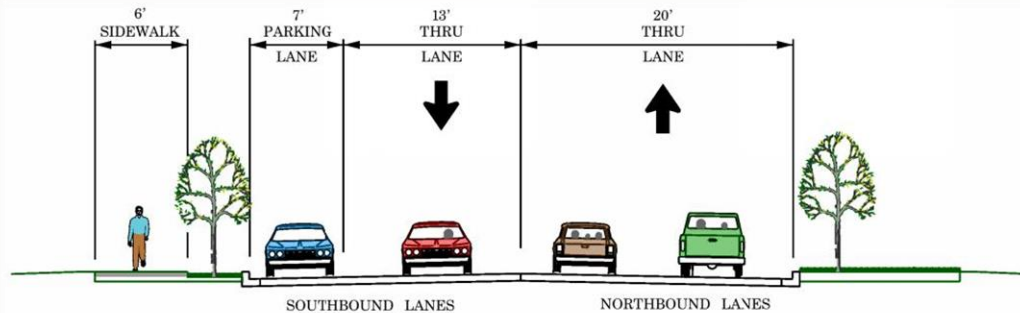


Roadway Improvement Objectives

- Reduce vehicle speeds.
- Improve pedestrian movements and safety.
- Provide a safer roadway for bicyclists.
- Reconstruct non-ADA compliant features.
- Reconstruct deteriorating roadway infrastructure.

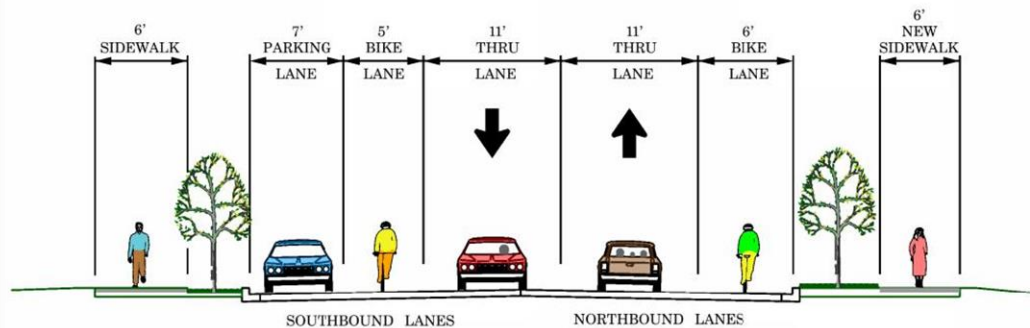


- Use pavement markings/ signs to reduce vehicle speed to closer match the posted speed and facilitate safe travel for bicyclists and pedestrians.



EXISTING TYPICAL SECTION

NOT TO SCALE

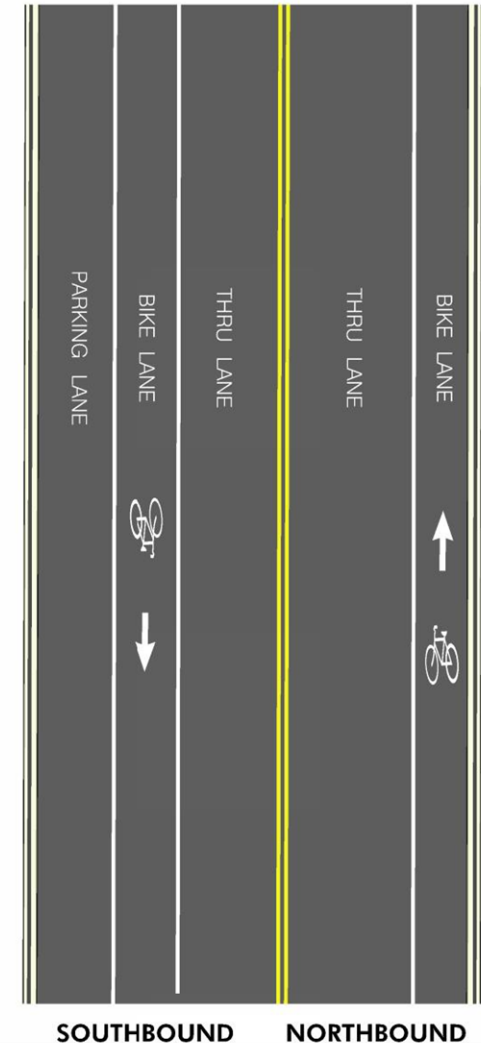


PROPOSED TYPICAL SECTION

FROM KANSAS AVENUE N.E. TO SLIGO MILL ROAD

NOT TO SCALE

PLAN VIEW



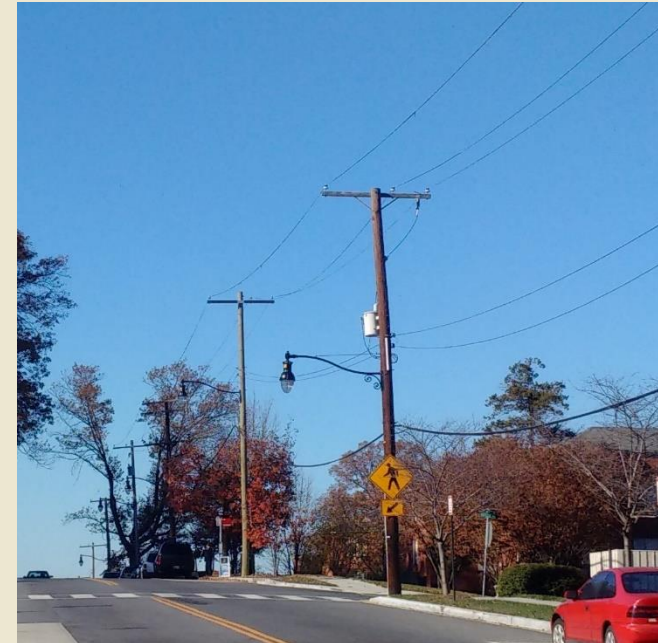
Use curb extensions/ bump-outs at intersections

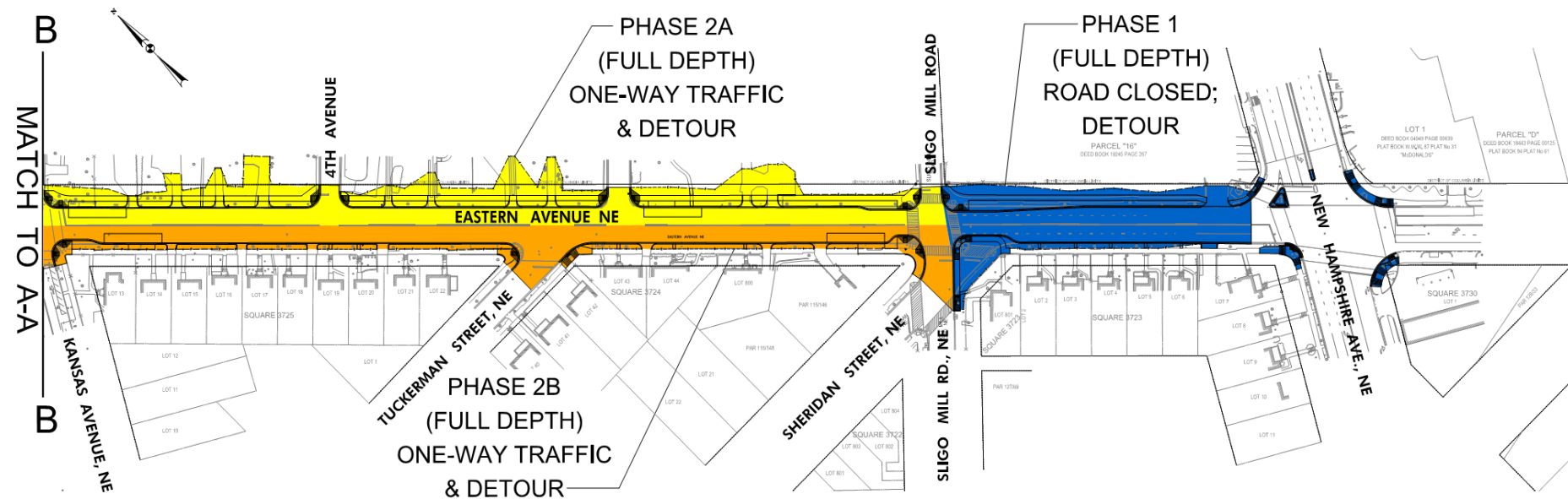
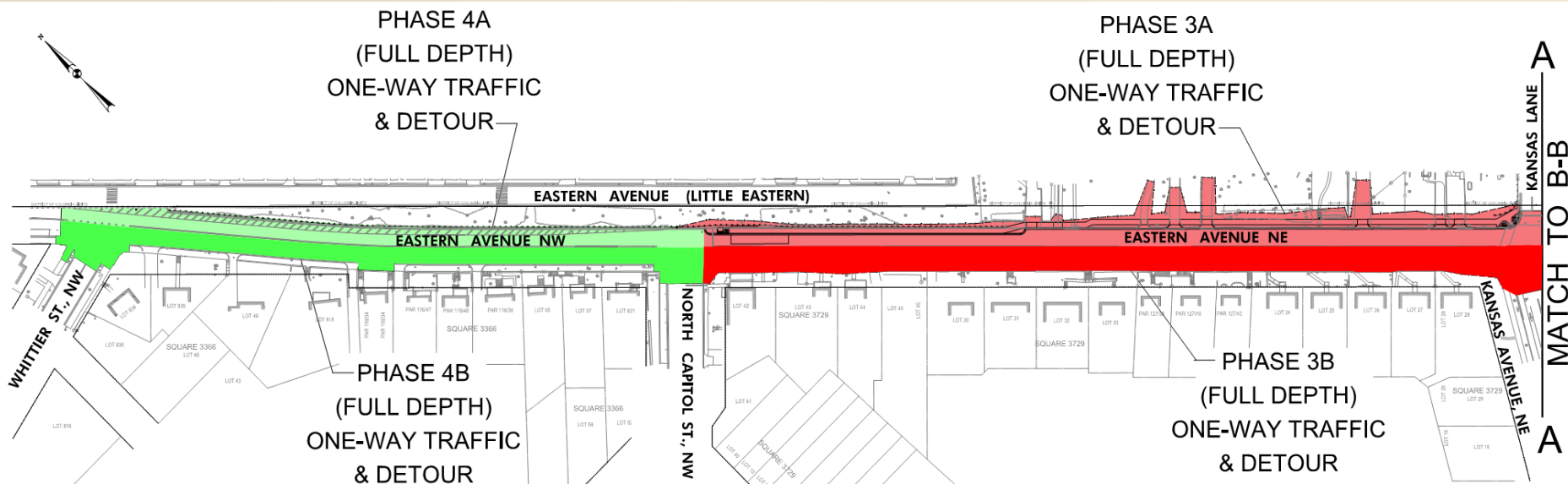
- To reduce vehicle speed.
- To reduce pedestrian crossing distance.
- To increase pedestrian visibility to drivers.





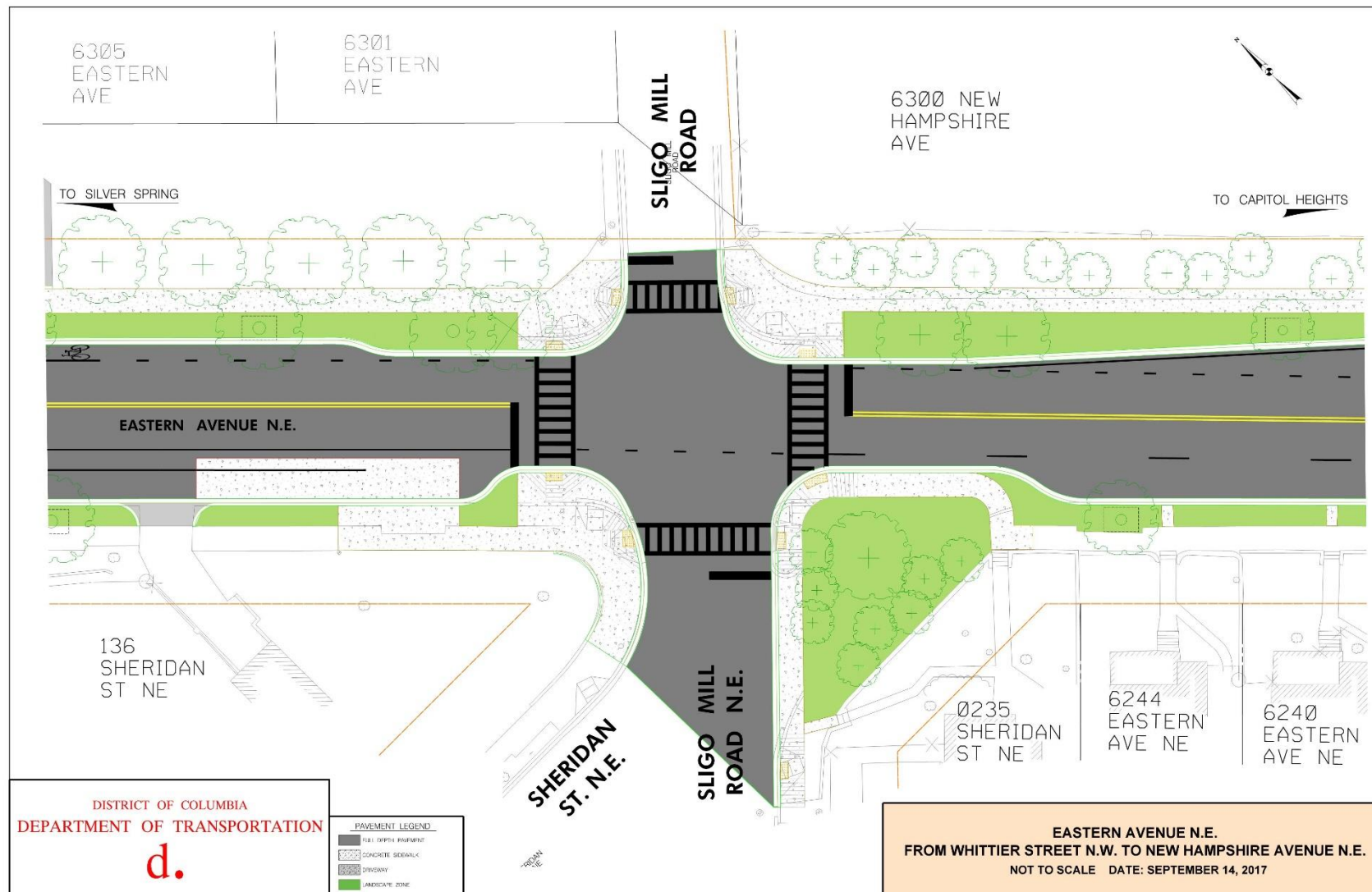
- Upgrade existing curb ramps, sidewalks and bus stops to meet ADA standards.
- Relocate bus stops due to new sidewalks.
- Rehabilitate deteriorating landscape/retaining walls.
- Upgrade deteriorating curb and gutter with granite curb.
- Upgrade street lighting.
- Replace/ add guiderail.





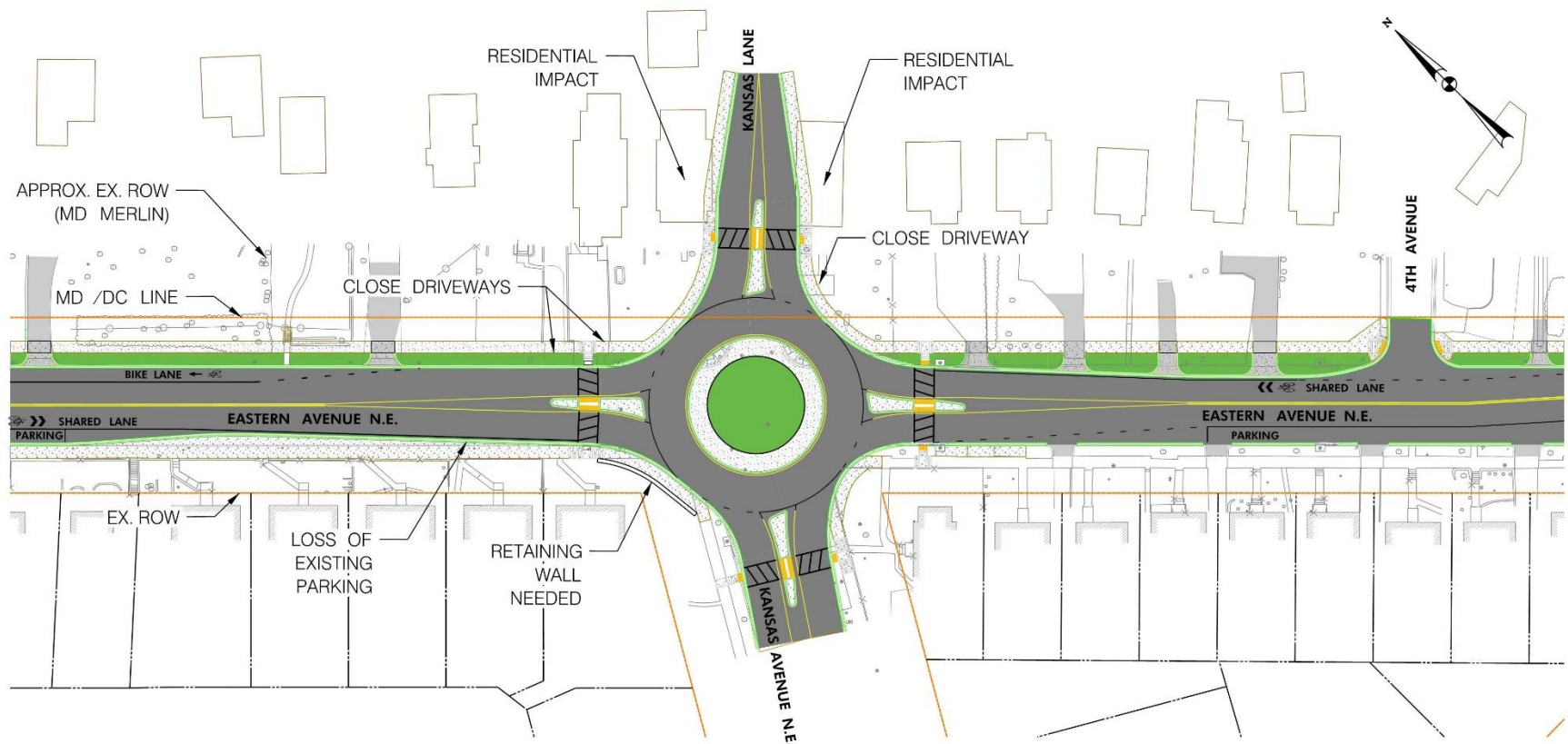
d. Intersection Improvements

District Department of Transportation



d. Intersection Improvements

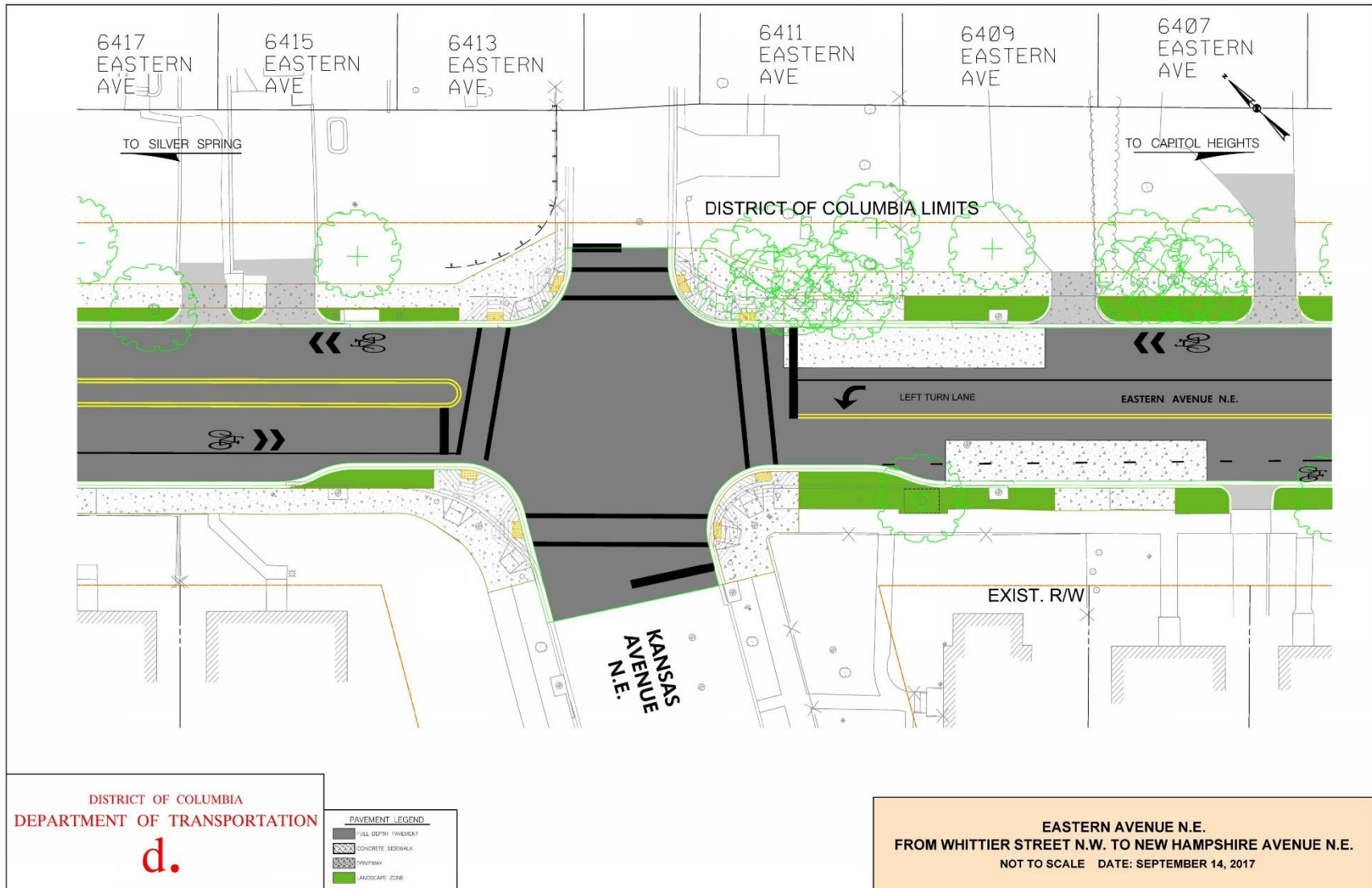
District Department of Transportation

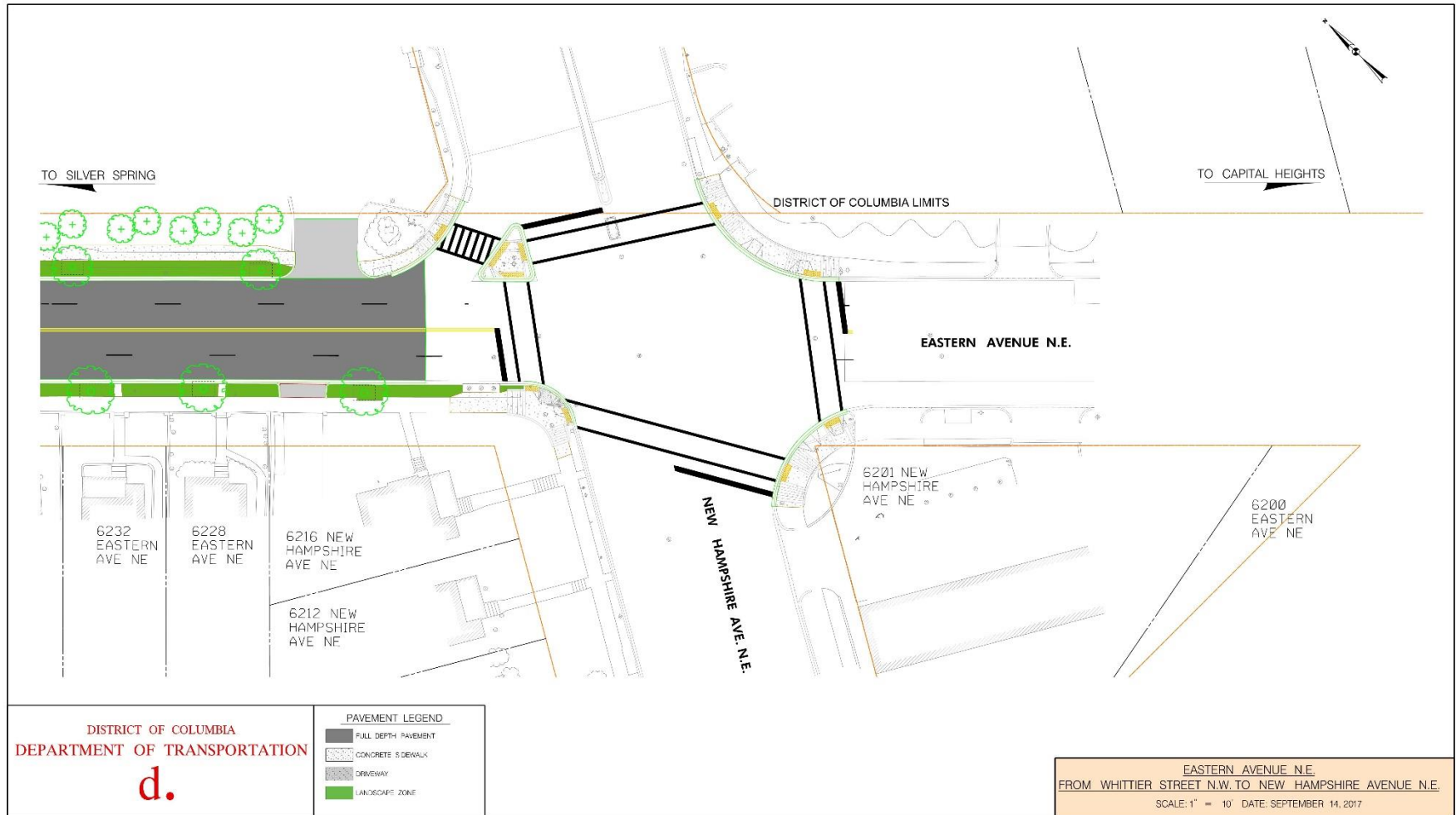


GENERAL NOTES

- 110' DIAMETER TO ACCOMMODATE FIRE TRUCKS
- MAJOR IMPACTS TO THE RESIDENTIAL PROPERTIES ON THE MD SIDE
- RELOCATE THREE EXISTING UTILITY POLES
- CLOSE DRIVEWAYS NEAR THE ROUNDABOUT
- A RETAINING WALL IS NEEDED AT THE SOUTHWEST QUADRANT
- SIX EXISTING INLETS ARE IMPACTED
- LOSS OF ON-STREET PARKING

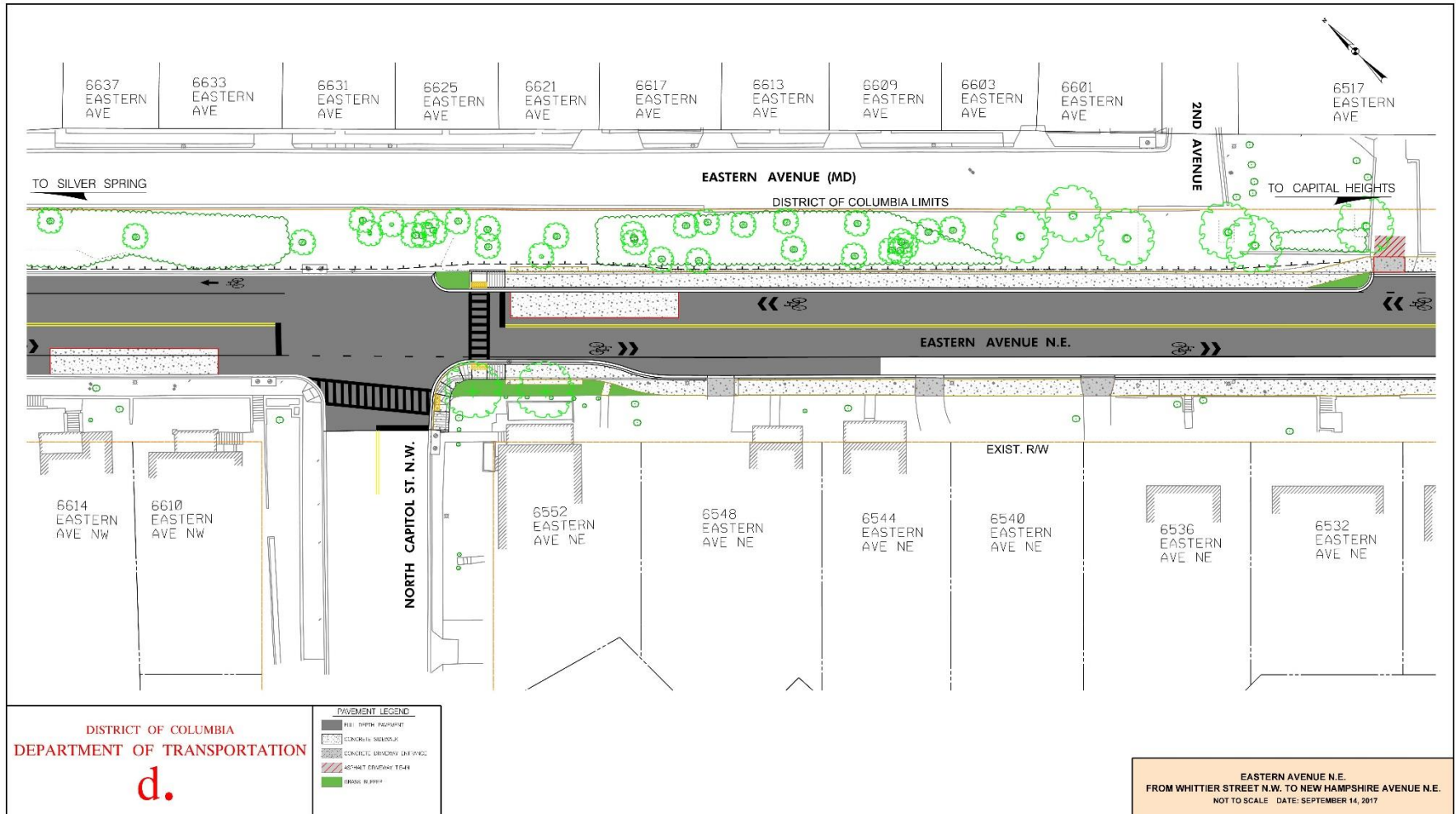
ROUNABOUT CONCEPT
EASTERN AVENUE, N.E. AT KANSAS AVENUE N.E.
(N.T.S.)

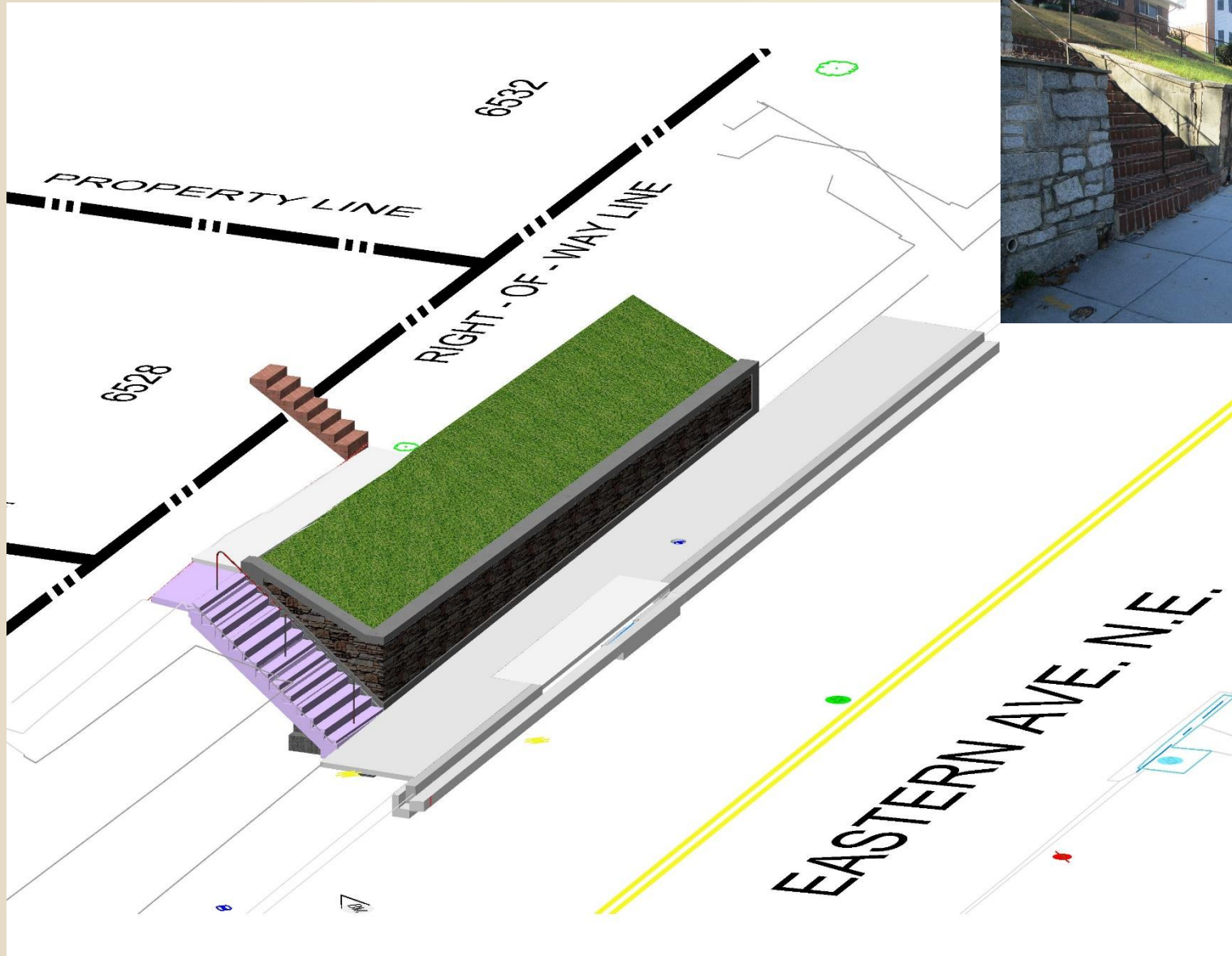




d. Sidewalk Extension and Bump Out

District Department of Transportation







GRANITE BLOCKS REPLACED



BRICK WALLS REPOINTED



GRANITE BLOCKS REPOINTED



LOW BRICK WALLS REPLACED IN-KIND



BRICK WALL REBUILT AS NEEDED

DISTRICT OF COLUMBIA
DEPARTMENT OF TRANSPORTATION

d.

EASTERN AVENUE N.E.
FROM WHITTIER STREET N.W. TO NEW HAMPSHIRE AVENUE N.E.
SCALE: NONE DATE: SEPTEMBER 14, 2017

Identify Opportunities for LID's

- Replace dead or missing trees.
- Preserve existing healthy trees.
- Introduce new trees and planting areas.
- Reduce paving.
- Introduce bioretention facilities



Current Project Schedule:

- **Design Completion: December 2017**
- **Construction Begins: Summer 2018**
- **Construction Completion: Summer 2019**