



Wheeler Road Multimodal Safety and Access Project

Ward 8 Traffic Safety Meeting

October 21, 2021

Karyn McAlister, AICP
Transportation Planner



Agenda

1. Wheeler Road Information

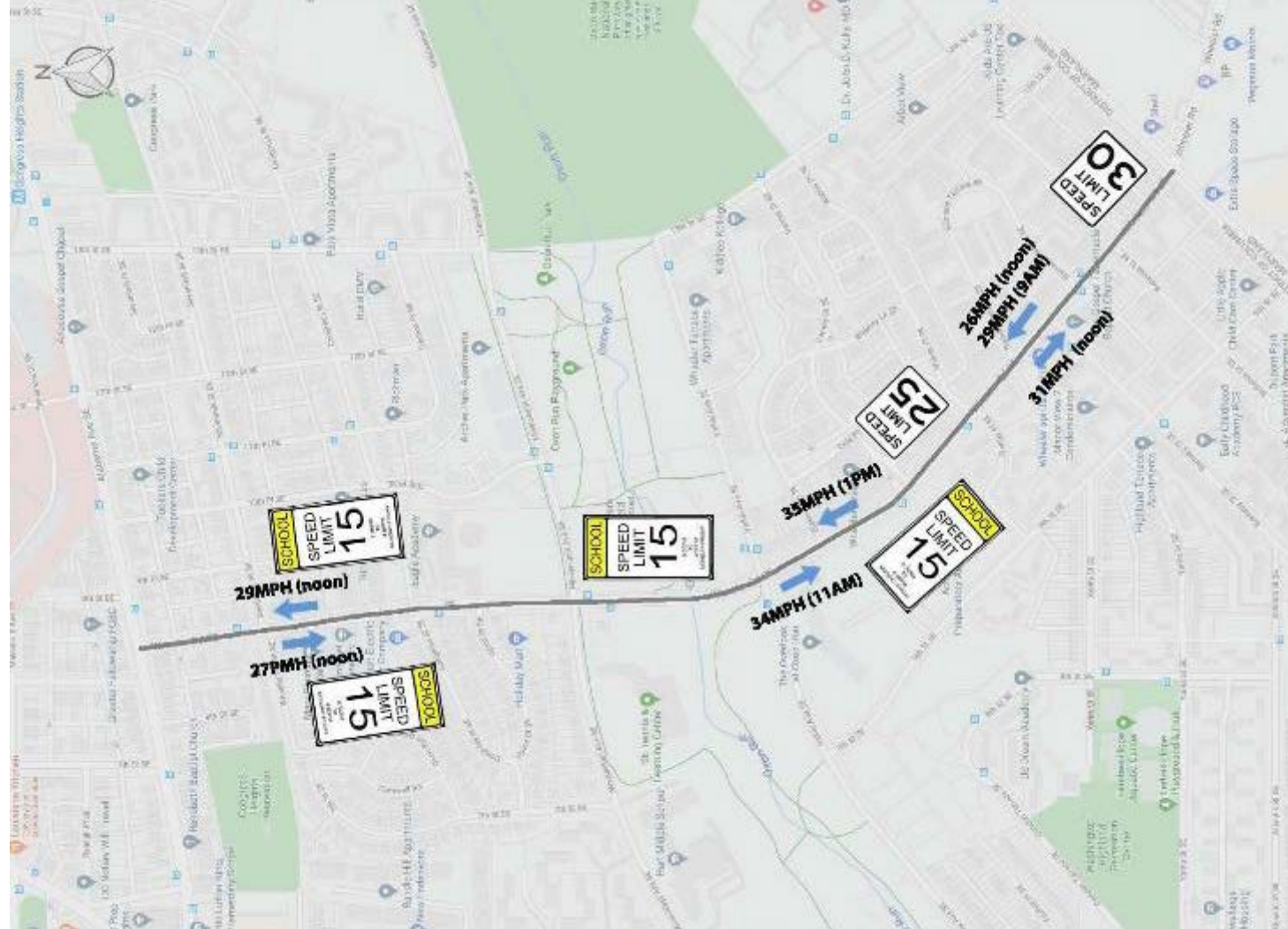
- Speeding
- Crashes
- Transit
- Curbside Uses

2. Introduce Traffic Safety Solutions/Tools

3. Survey Results

4. Safety Improvements

Speeding



Speed Reduction Tools – Median Islands

1. Slows traffic by narrowing the roadway
2. Speed reductions between 1 and 8 mph ([FHWA](#))



Speed Reduction Tools - Automated Speed Enforcement Cameras

1. In DC, 82% reduction in the proportion of vehicles exceeding the speed limit by more than 10 MPH
(DC Policy Center)
2. In DC, cameras reduced travel speeds by 14%
(DC Policy Center)
3. Reduces crashes by 17%
(FHWA Speed Management Toolkit)

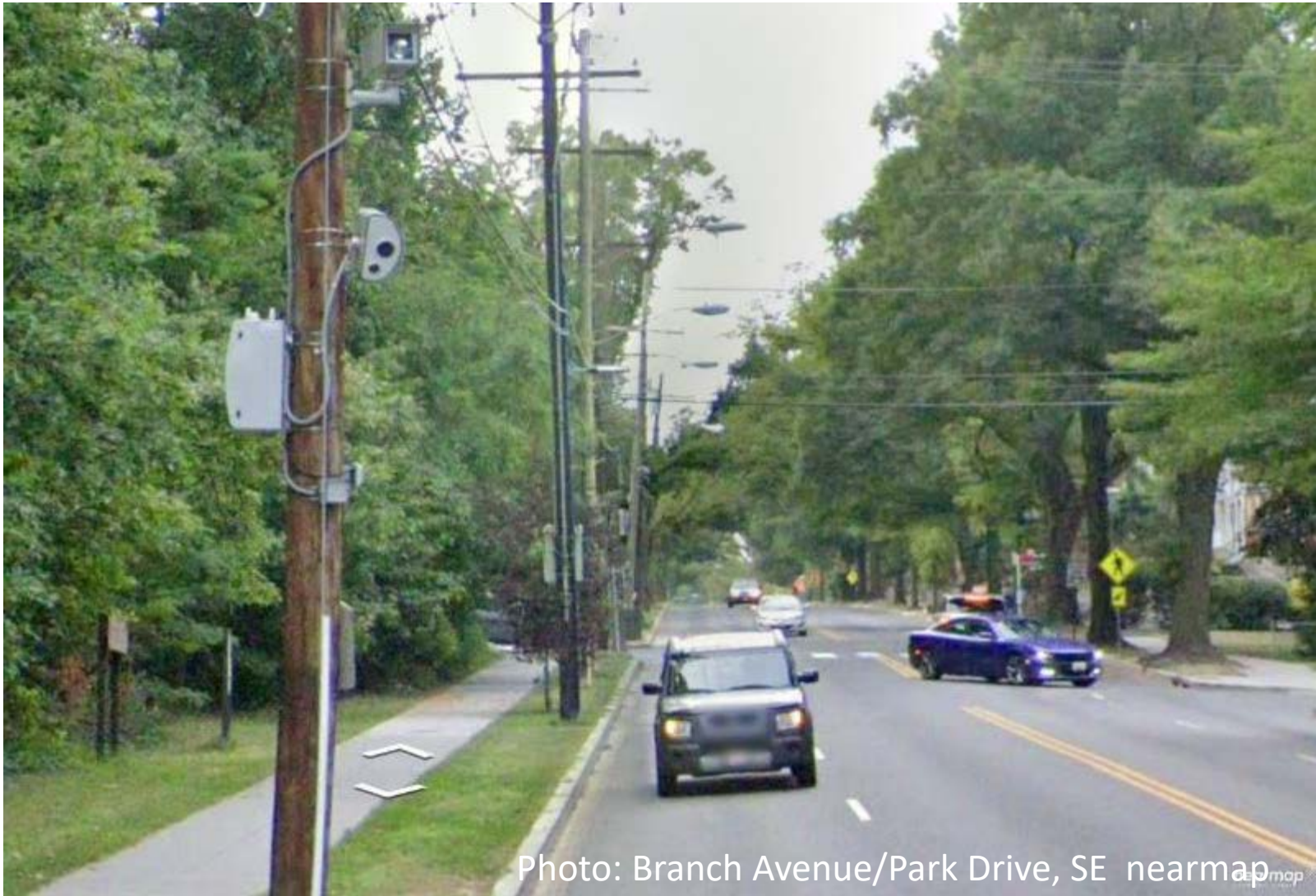


Photo: Branch Avenue/Park Drive, SE nearmap

Speed Reduction Tools - Parking Boxes + Curb Extensions

1. On-street parking can slow traffic 1-5 MPH (FHWA)
2. Curb extensions slows turning traffic

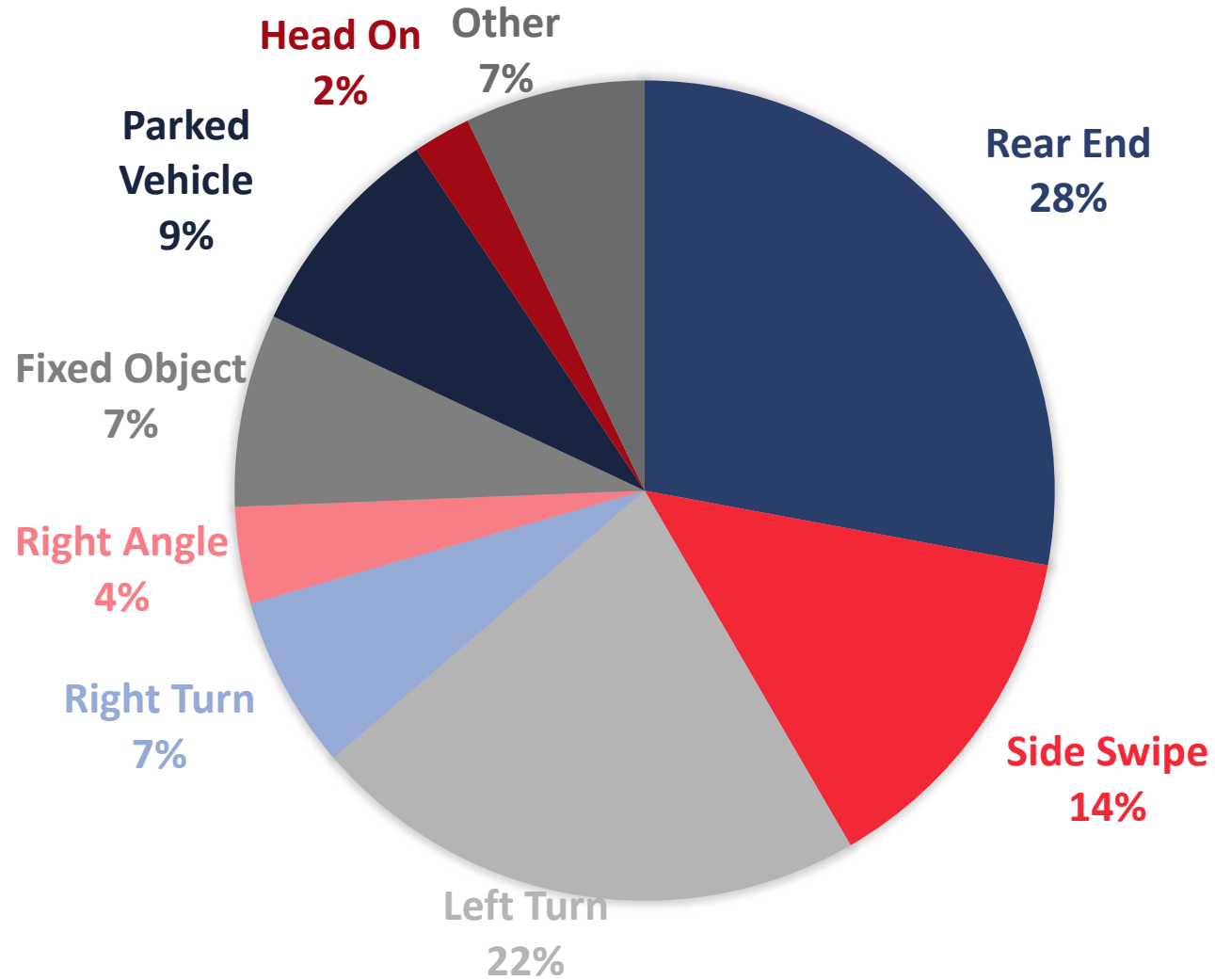


Image: FHWA PEDSAFE

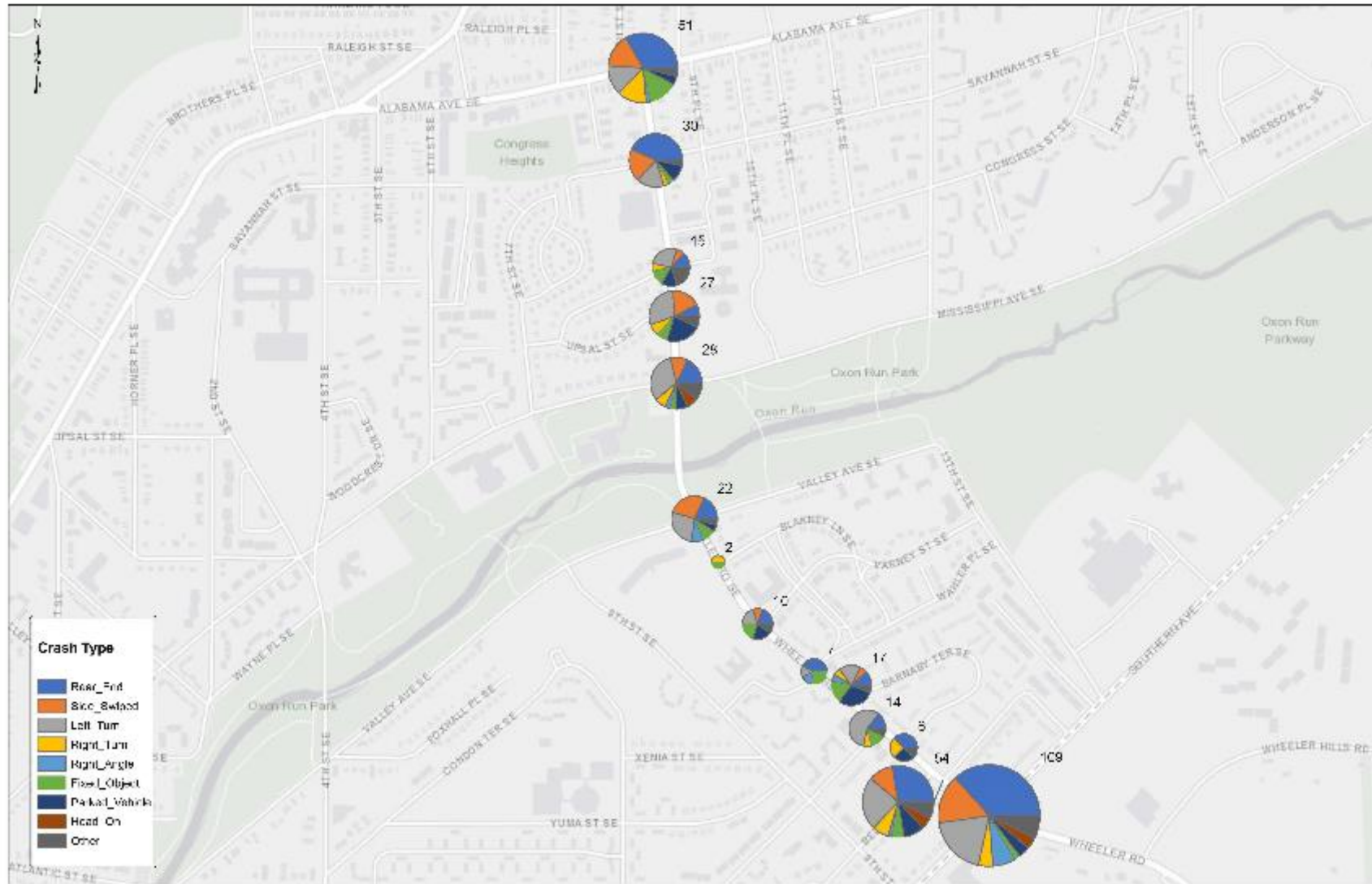
Crashes (2017-2019)



Crash Types (2017 – 2019)

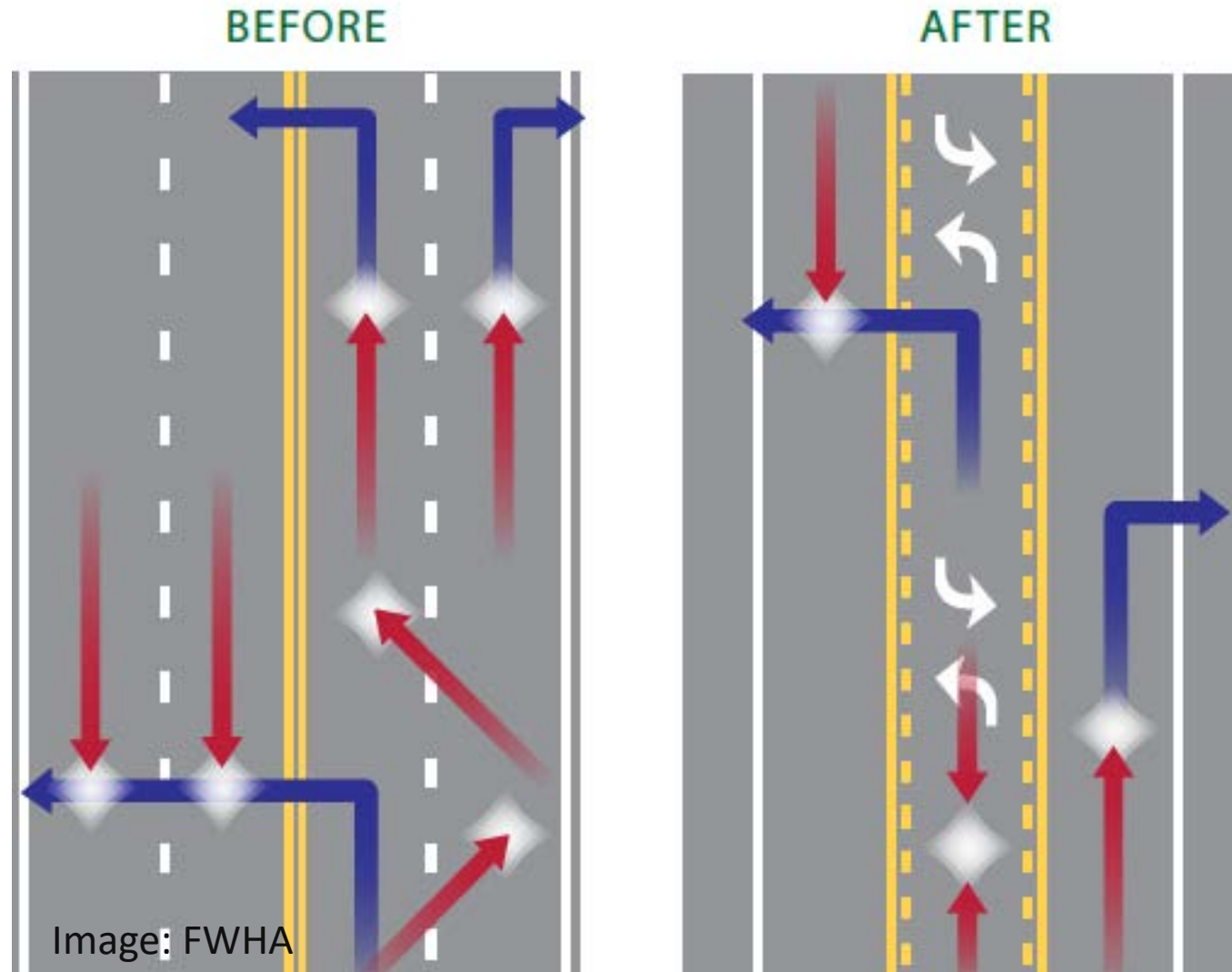


Crash Types (2017 – 2019)



Crash Reduction Tools – Road Diet

1. 19% - 47% overall crash reduction ([FHWA](#))
2. Reduces rear-end, left turn, and right angle crashes
3. Reduces delays by separating left turns
4. More consistent traffic flow and less “accordion style” slow-and-go operations
5. Safer for pedestrians to cross with fewer lanes and if a pedestrian island is added
6. Safer for bicyclists if extra space is converted to a bike lane



Crash Reduction Tools – Median Island with Pedestrian Cutout

1. Shown to reduce pedestrian crashes by 56% (FHWA)
2. Improves pedestrian safety
3. Slows and calms vehicular traffic



Transit



Transit Tools – Curb Extensions (temporary/quick build shown here)

1. Reduces pedestrian crossing distances and exposure to traffic
2. Improves visibility for pedestrians and drivers
3. Keeps vehicles from parking too close to intersections/blocking crosswalks



Photo: Good Hope Rd/13th St., SE nearmap

Transit Tools – Median Island with Pedestrian Cutout

1. Shown to reduce pedestrian crashes by 56% (FHWA)
2. Provides pedestrian protection from vehicles
3. Simplifies pedestrian crossings by allowing pedestrians to cross one direction at a time



Photo: www.pedbikeimages.org / Dan Burden

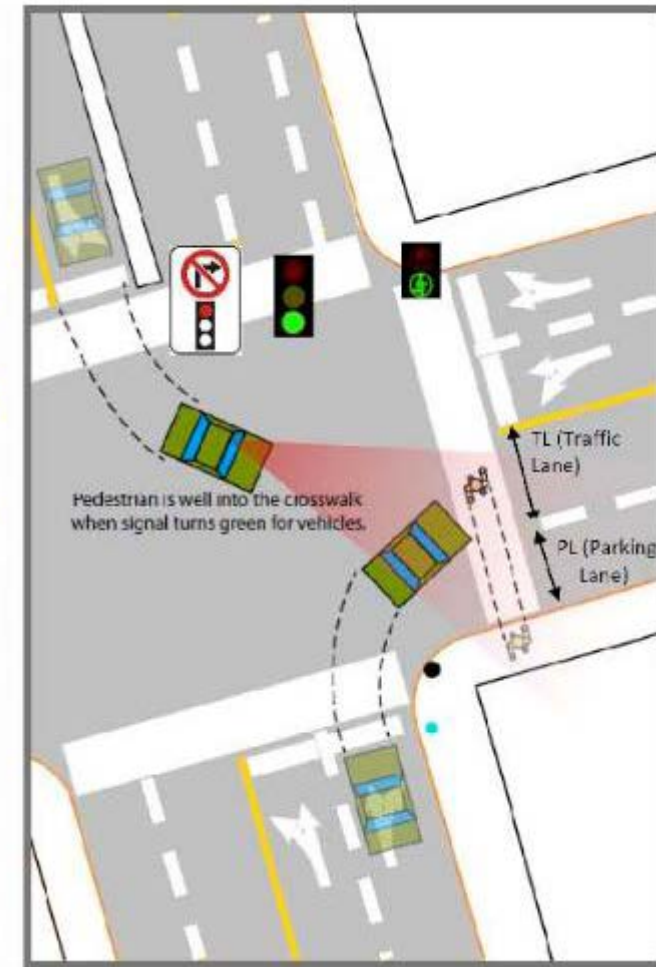
Transit Tools – Rectangular Rapid Flashing Beacon

1. Reduces pedestrian crashes by 47%
([NCHRP](#))
2. Increases driver yielding 18% - 81%
([FHWA](#))
3. Effective at multilane crossings with speed limits less than 40 mph ([PEDSAFE](#))



Transit Tools – Leading Pedestrian Interval

1. Reduces pedestrian-vehicle crashes as much as 60% (NYCDOT)
2. Gives pedestrians 3-7 second head start at a crosswalk
3. Enhances the visibility of pedestrians and reinforces their right of way over turning vehicles



Transit Tools – Bus Island

1. Improved transit delivery by allowing buses to pickup passengers without leaving the travel lane
2. Improves safety by eliminating conflicts between bikes and buses



Transit Tools – Bus Priority Lane

1. Improves bus travel schedule and reliability
2. Creates dedicated lane for buses, bicycles and scooters



Source: [WashCycle](#)

Curbside Uses



Curbside Tools – Structured Parking

1. Painted parking boxes and signs prevent vehicles from parking too close to crosswalks and impeding visibility
2. Short-term parking zones at schools can streamline pick-up and drop-off



Image Source: FHWA

Curbside Tools - Chicanes

1. Chicanes “bookend” parking and discourage speeding
2. Staggered chicanes create “curves” on a street and slow traffic

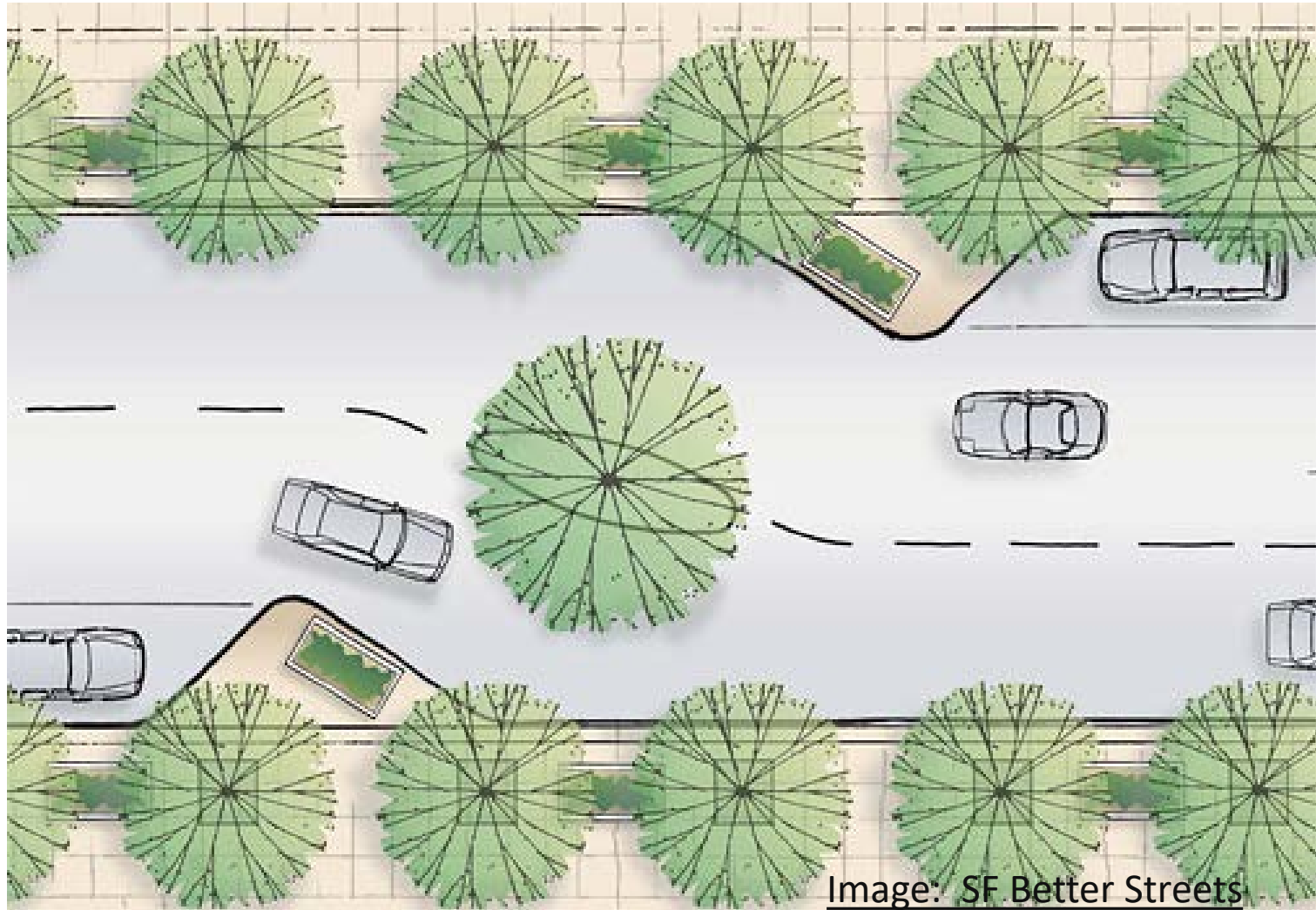


Image: SF Better Streets

Survey Outreach

- 2000+ Door Hangers distributed to residents ½ mile radius of Wheeler Road
 - 200 respondents = 10% response rate
- Shared via e-newsletters and social media (DDOT, elected officials, schools)
- Project website
<https://ddot.dc.gov/wheelerroad>

Wheeler Road

DDOT wants to hear from you!


The District Department of Transportation (DDOT) wants to hear from Ward 8 residents about safety improvements along Wheeler Road SE.

Your feedback is important as we work together to make Wheeler Road SE safer for pedestrians and drivers.


Please listen to the presentation at:
ddot.dc.gov/wheelerroad


Then, take the survey and provide your feedback at:
<https://forms.gle/EQjiBkMv1kZwXlLk9>

THE PRESENTATION




TAKE THE SURVEY




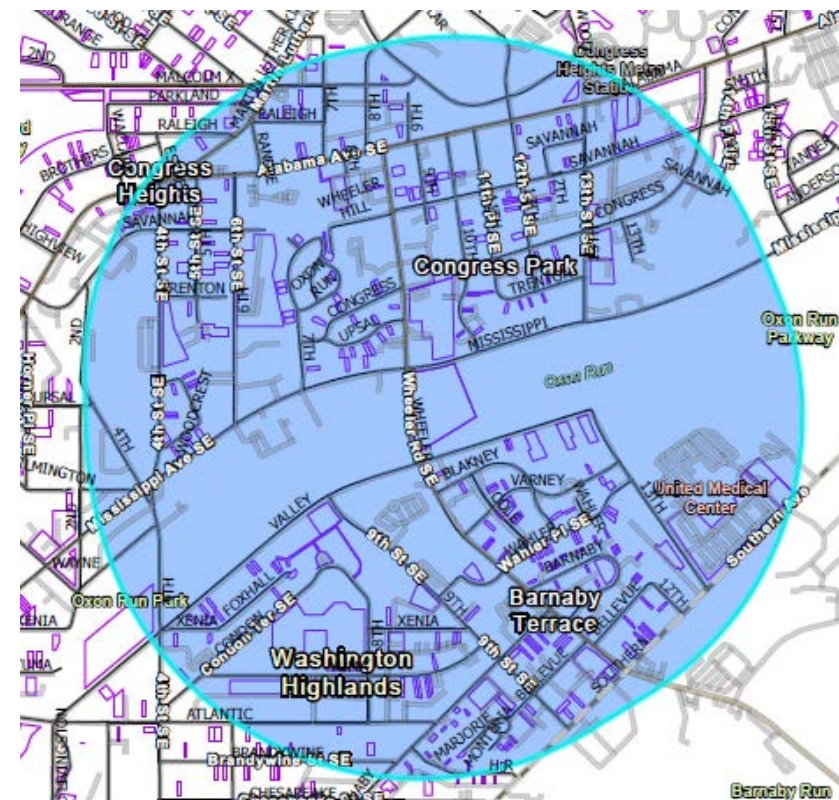


For more information, please contact
Karyn McAlister at 202-741-8520 or
karyn.mcalister@dc.gov

VISION
ZERO

d.
DISTRICT OF COLUMBIA

GOVERNMENT OF THE
DISTRICT OF COLUMBIA
MURIEL BOWSER, MAYOR



Q1-Speed Reduction-Please check the boxes of the photos of the Speed Reduction tools that you support for Wheeler Road. You many check more than one box.

Please check the boxes of the photos of the Speed Reduction tools that you support for Wheeler Road. You many check more than one box.



☐ Median Island (Concrete)



☐ Median Island (Painted)



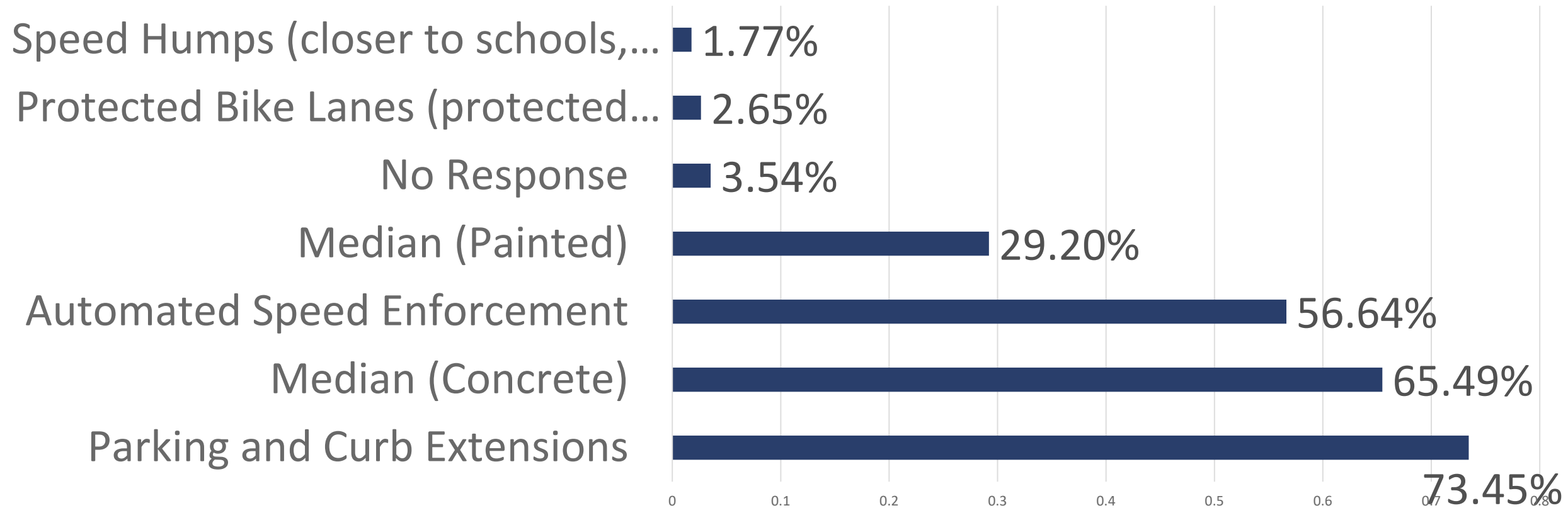
☐ Automated Speed Enforcement

☐ Other:



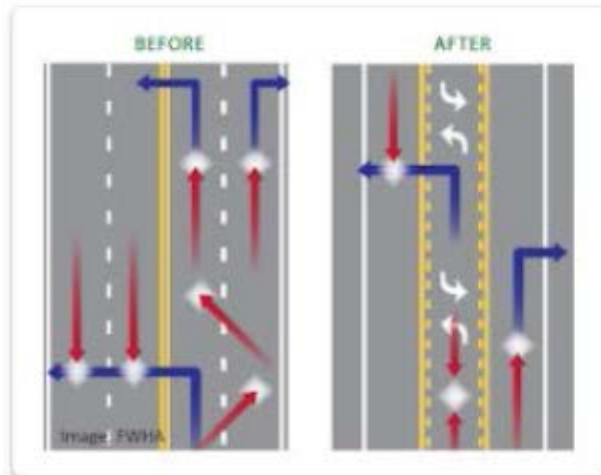
☐ Parking and Curb Extensions

Q1-Speed Reduction-Please check the boxes of the photos of the Speed Reduction tools that you support for Wheeler Road. You many check more than one box.



Q2-Please check the boxes of the photos of the Crash Reduction tools that you support for Wheeler Road. You may check on more than one box.

Please check the boxes of the photos of the Crash Reduction tools that you support for Wheeler Road. You may check on more than one box.



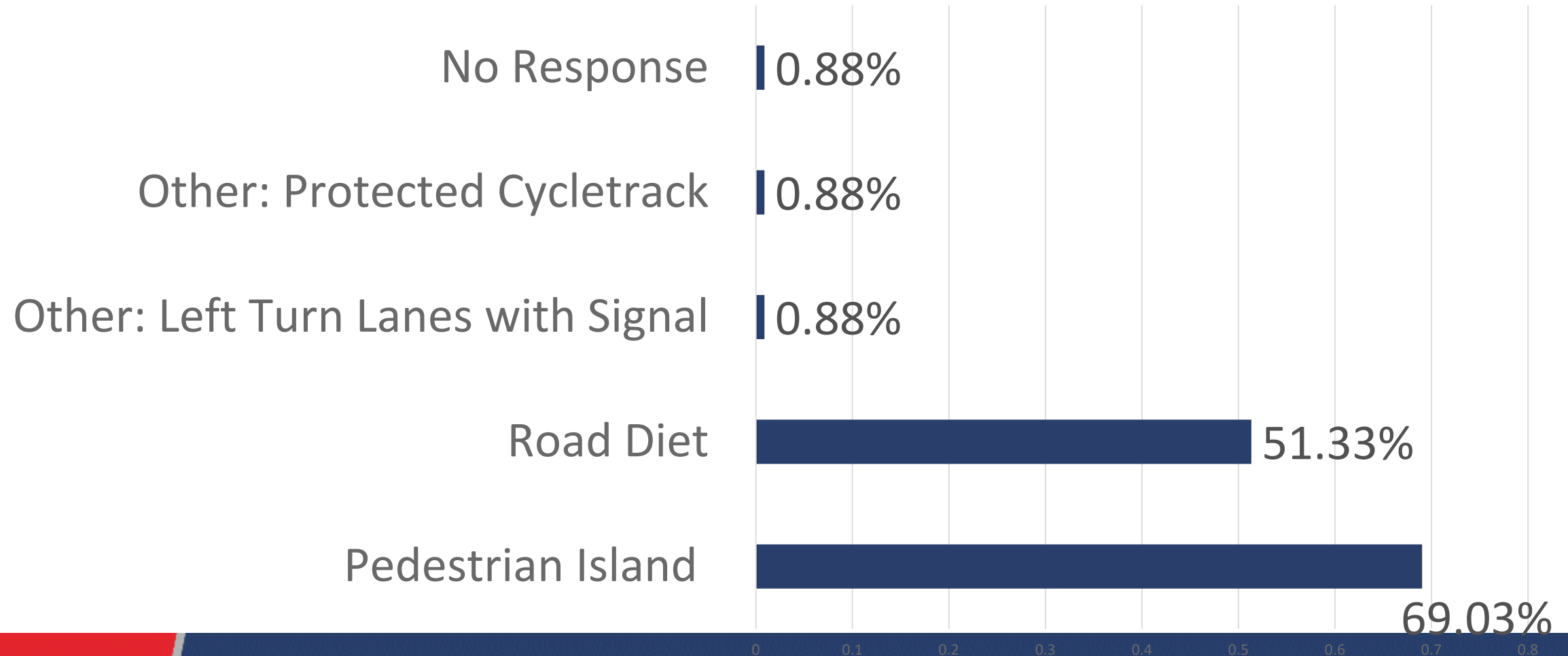
☐ Road Diet

☐ Other:



☐ Pedestrian Island

Q2-Crash Reduction - Please check the boxes of the photos of the Crash Reduction tools that you support for Wheeler Road. You may check on more than one box.



Q3-First/Last Mile Tools-Please check the boxes of the photos of the First/Last Mile tools that you support for Wheeler Road. You may check on more than one box.

Please check the boxes of the photos of the First/Last Mile tools that you support for Wheeler Road. You may check on more than one box.



☐ Pedestrian Island



☐ Bus Priority Lane



☐ Curb Extension (temporary/quick build)



☐ Bus Island



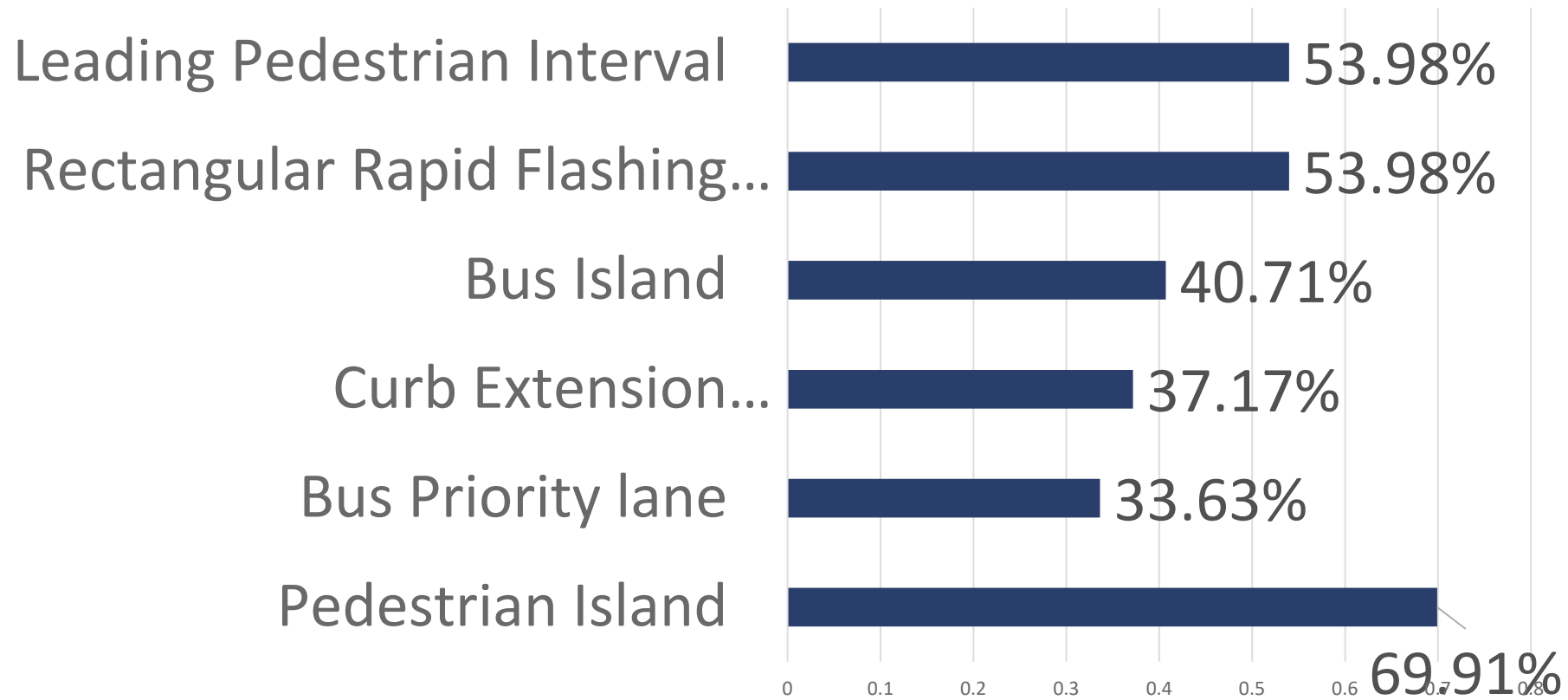
☐ Rectangular Rapid Flashing Beacon

☐ Other



☐ Leading Pedestrian Interval

Q3-First/Last Mile Tools-Please check the boxes of the photos of the First/Last Mile tools that you support for Wheeler Road. You may check on more than one box.



Q4-Curbside Tools-Please check the boxes of the photos of the Curbside tools that you support for Wheeler Road. You may check on more than one box.

Please check the boxes of the photos of the Curbside tools that you support for Wheeler Road. You may check on more than one box.

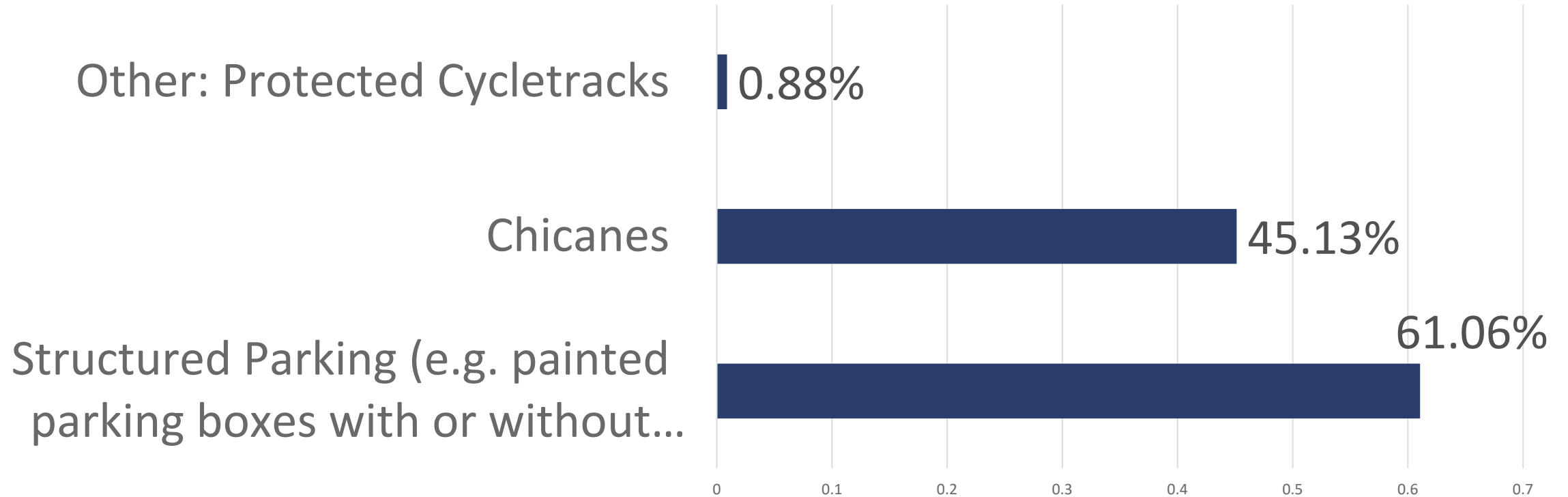


- ☐ Structured Parking (e.g. painted parking boxes with or without curb extensions, chicanes.
- ☐ Other:



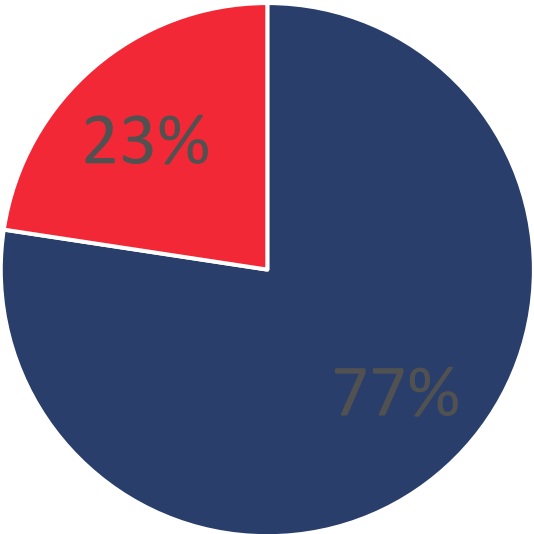
- ☐ Chicanes

Q4-Curbside Tools-Please check the boxes of the photos of the Curbside tools that you support for Wheeler Road. You may check on more than one box.



Q5-Are you a Ward 8 Resident?

Q5-Are you a Ward 8 resident?

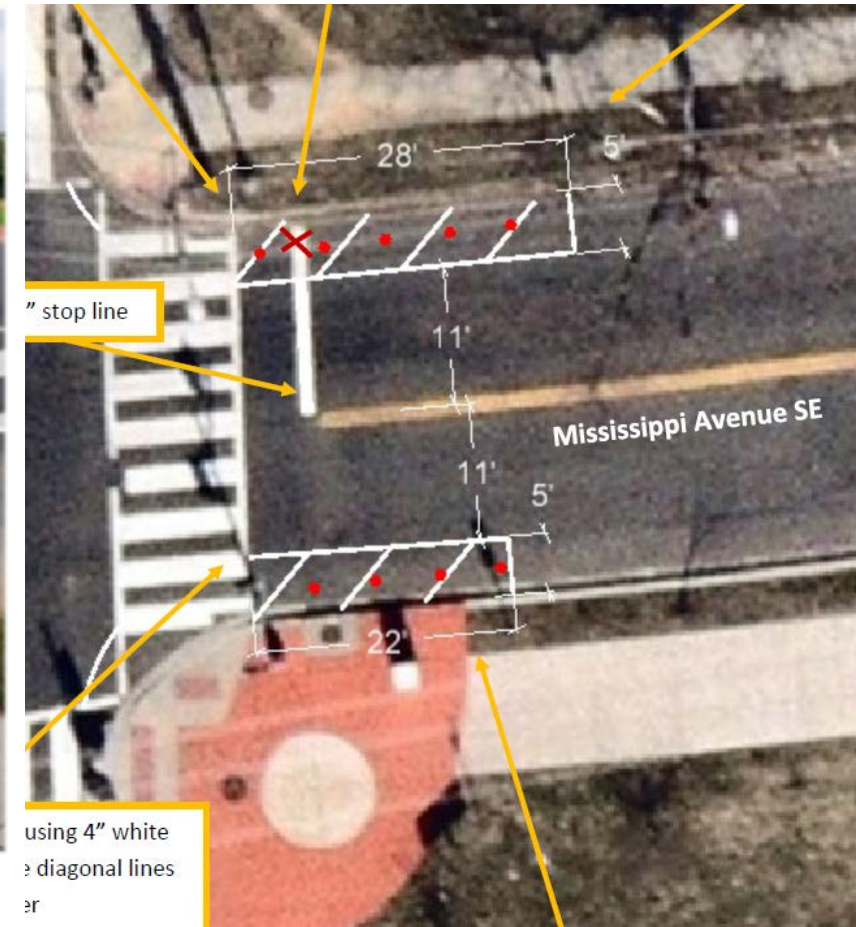


■ Ward 8 Residents ■ Non-Ward 8 Residents



Wheeler Road Safety Improvements

- Automated Traffic Enforcement
 - 3400 block Wheeler Road SB (across from Eagle Academy)
 - 4000 block Wheeler Road NB (next to Wheeler Creek driveway/Varney Street)
- Left Turn Calming (Installed)
 - Slows Turning Vehicles by approximately 20%
- Curb Extensions on Mississippi Avenue
 - Flex posts and diagonal hatching
- Pavement Markings
 - Repaint stop bars, double yellow center line



Wheeler Road Safety Improvements

- Upgrade and Relocate Signs for Improved Driver Compliance and Visibility
 - Turning Vehicles Stop for Pedestrians
 - No Turn on Red
 - No Standing or Parking Anytime
 - No Standing or Parking Metro Bus Zone
 - Speed Hump Ahead





Please provide feedback by taking the Wheeler Road Survey

<https://forms.gle/EQjiBkMv1kZwXiLk9>

Project website:

<https://ddot.dc.gov/page/wheeler-road-se-roadway-safety-and-complete-streets-project>



District Department of Transportation