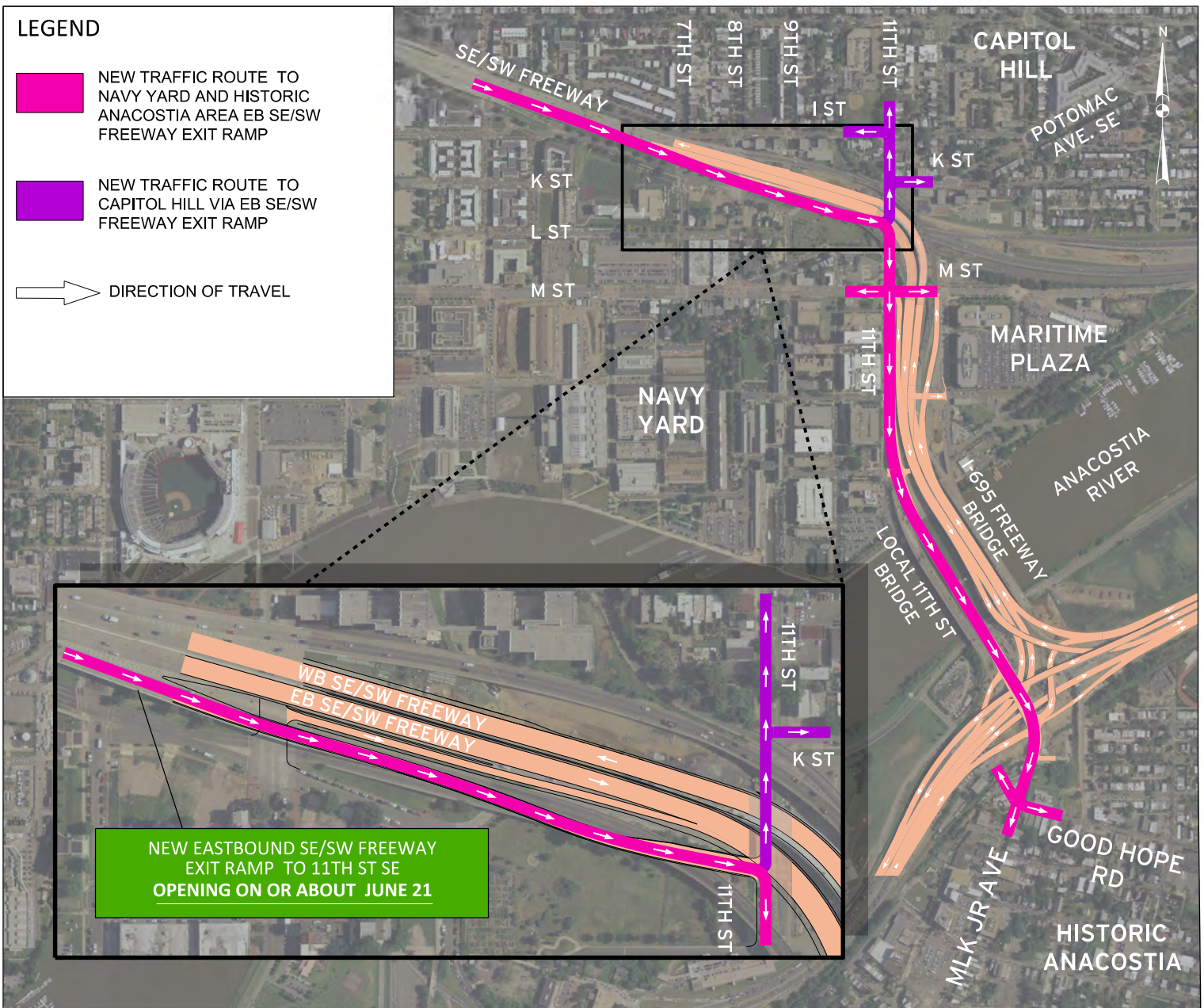


## NEW TRAFFIC PATTERNS FOR SOUTHEAST/SOUTHWEST FREEWAY IN CAPITOL HILL, NAVY YARD, AND HISTORIC ANACOSTIA AREA

THE 11TH STREET BRIDGE PROJECT WILL OPEN A NEW EXIT RAMP IN THE COMING WEEKS THAT WILL PROVIDE NEW TRAFFIC ROUTES FOR CAPITOL HILL, NAVY YARD, AND HISTORIC ANACOSTIA AREAS. THIS RAMP PROVIDE IMPROVED LOCAL CONNECTIONS FROM SOUTHEAST/SOUTHWEST FREEWAY. (SEE MAP BELOW FOR DETAILS AND DATE)



**For More Information**

Visit <http://www.anacostiawaterfront.org/11thStreetBridge> , call 202-741-8528 or email [ddot.awi@dc.gov](mailto:ddot.awi@dc.gov)

