

PRE-GAME OPERATIONAL NOTES

- M Street SE and 1st Street SE
 - Place two MPD officers to assist pedestrian crossings and enforce traffic operations
 - Install permanent signs indicating turn restrictions during events
 - Install permanent "Taxi Stand" signs along 1st Street SE
 - Place barriers along east side of 1st Street SE between M Street and N Street, blocking off parking lane for use by pedestrians
- M Street SE and New Jersey Avenue
 - Place two MPD officers at intersection to assist pedestrian crossings, enforce traffic operations and operate traffic signal
 - Install permanent signs indicating turn restrictions during events
- M Street SE and 2nd Street SE
 - Place traffic cones to restrict turning movements as shown (2 hours before to 1 hour after event)
 - Install permanent signs indicating turn restrictions during events

POST-GAME OPERATIONAL NOTES

- M Street SE and 1st Street SE
 - Place two MPD officers to assist pedestrian crossings and enforce traffic operations
 - Install permanent signs indicating turn restrictions during events
 - Install permanent "Taxi Stand" signs along 1st Street SE
 - Place barriers along east side of 1st Street SE between M Street and N Street, blocking off parking lane for use by pedestrians
 - Place squad car as shown to block southbound 1st Street access
- M Street SE and New Jersey Avenue
 - Place two MPD officers at intersection to assist pedestrian crossings, enforce traffic operations and operate traffic signal
 - Install permanent signs indicating turn restrictions during events
- M Street SE and 2nd Street SE
 - Place traffic cones to restrict turning movements as shown (2 hours before to 1 hour after event)
 - Install permanent signs indicating turn restrictions during events

Figure A5
 Operations Plan Sheets G, H & I
 M Street at 1st Street S.E. / New Jersey Ave S.E. / 2nd Street S.E.
 Scale: 1"=100'
 March 12, 2008

█ PRE-GAME ONLY MITIGATION
 █ POST-GAME ONLY MITIGATION
 █ PRE & POST GAME MITIGATION

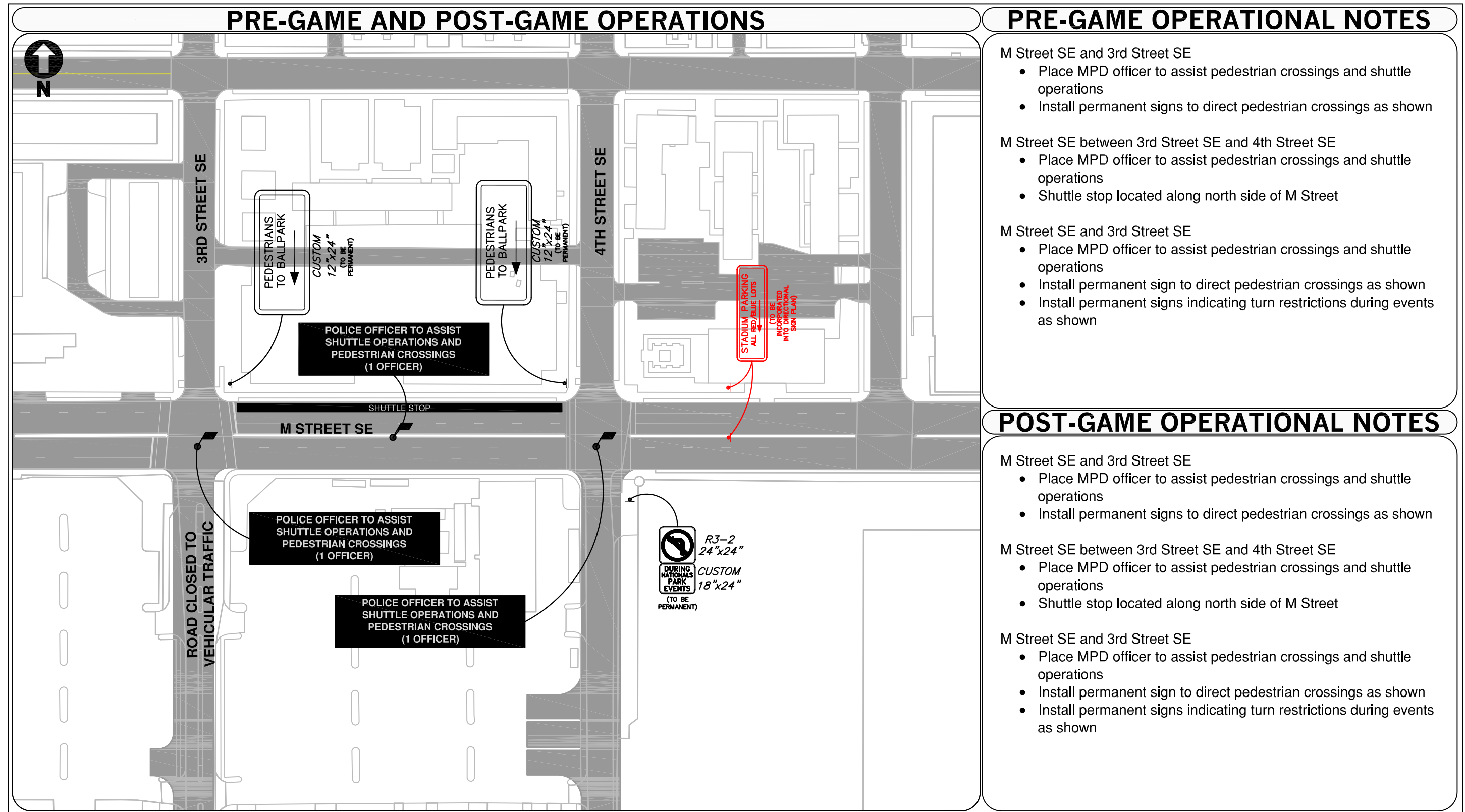


Figure A6
 Operations Plan Sheets J & K
 M Street S.E. at 3rd Street S.E. / 4th Street S.E.
 Scale: 1"=100'
 March 12, 2008

— PRE-GAME ONLY MITIGATION — POST-GAME ONLY MITIGATION — PRE & POST GAME MITIGATION

PRE-GAME OPERATIONAL NOTES

- M Street SE and 3rd Street SE
 - Place MPD officer to assist pedestrian crossings and shuttle operations
 - Install permanent signs to direct pedestrian crossings as shown
- M Street SE between 3rd Street SE and 4th Street SE
 - Place MPD officer to assist pedestrian crossings and shuttle operations
 - Shuttle stop located along north side of M Street
- M Street SE and 3rd Street SE
 - Place MPD officer to assist pedestrian crossings and shuttle operations
 - Install permanent sign to direct pedestrian crossings as shown
 - Install permanent signs indicating turn restrictions during events as shown

POST-GAME OPERATIONAL NOTES

- M Street SE and 3rd Street SE
 - Place MPD officer to assist pedestrian crossings and shuttle operations
 - Install permanent signs to direct pedestrian crossings as shown
- M Street SE between 3rd Street SE and 4th Street SE
 - Place MPD officer to assist pedestrian crossings and shuttle operations
 - Shuttle stop located along north side of M Street
- M Street SE and 3rd Street SE
 - Place MPD officer to assist pedestrian crossings and shuttle operations
 - Install permanent sign to direct pedestrian crossings as shown
 - Install permanent signs indicating turn restrictions during events as shown



PRE-GAME AND POST-GAME OPERATIONS

PRE-GAME OPERATIONAL NOTES

- M Street SE and 11th Street SE
- Place MPD officer to improve flow from 12 St SE onto M St SE westbound. This intersection is stop-sign controlled and this limits the amount of vehicles that can turn left from 12th Street (from the 11th Street bridges off-ramp) onto M Street.

POST-GAME OPERATIONAL NOTES

- M Street SE and 12th Street SE
- Place MPD officer to assist eastbound traffic turning right from M St SE onto 11th St SE.

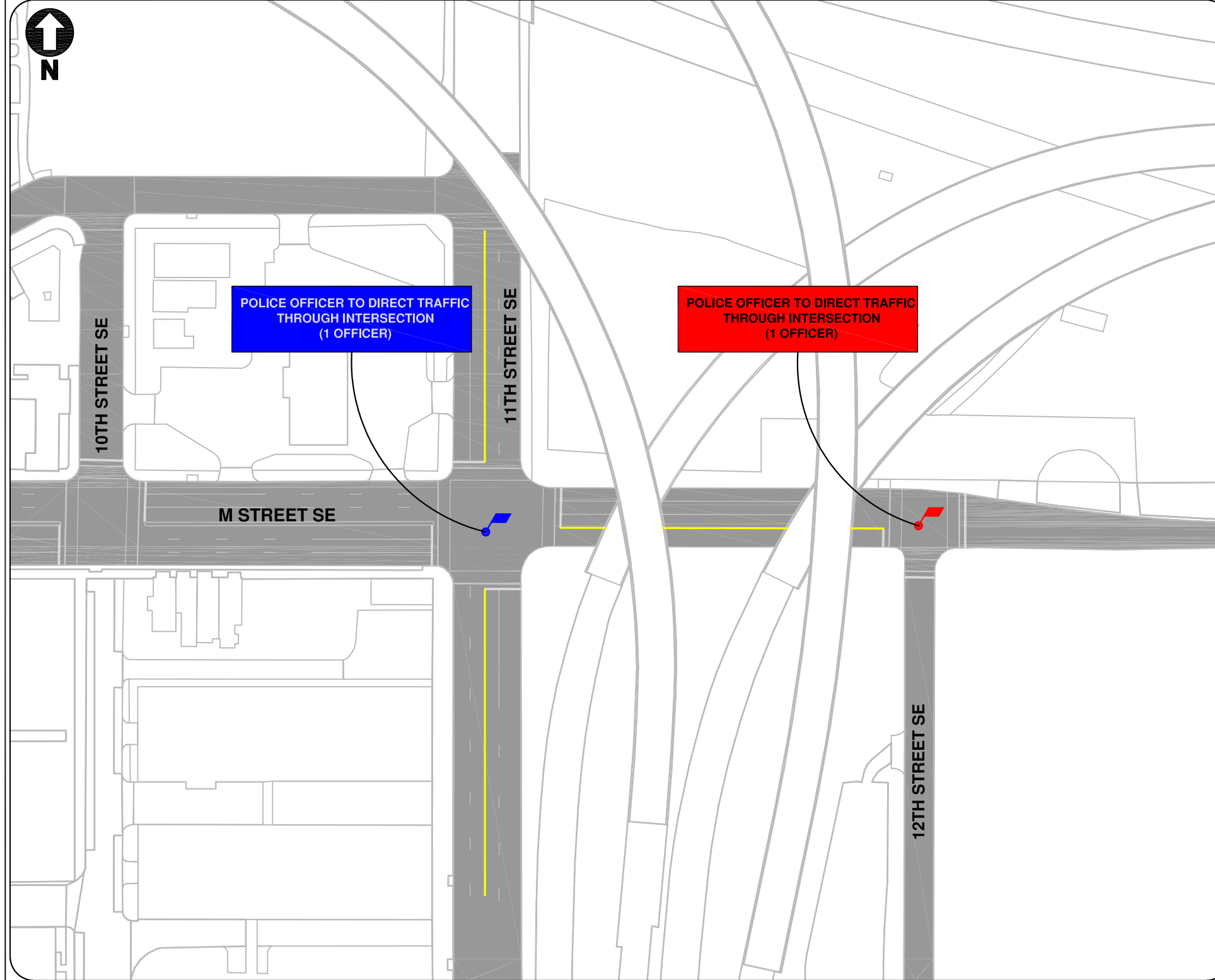
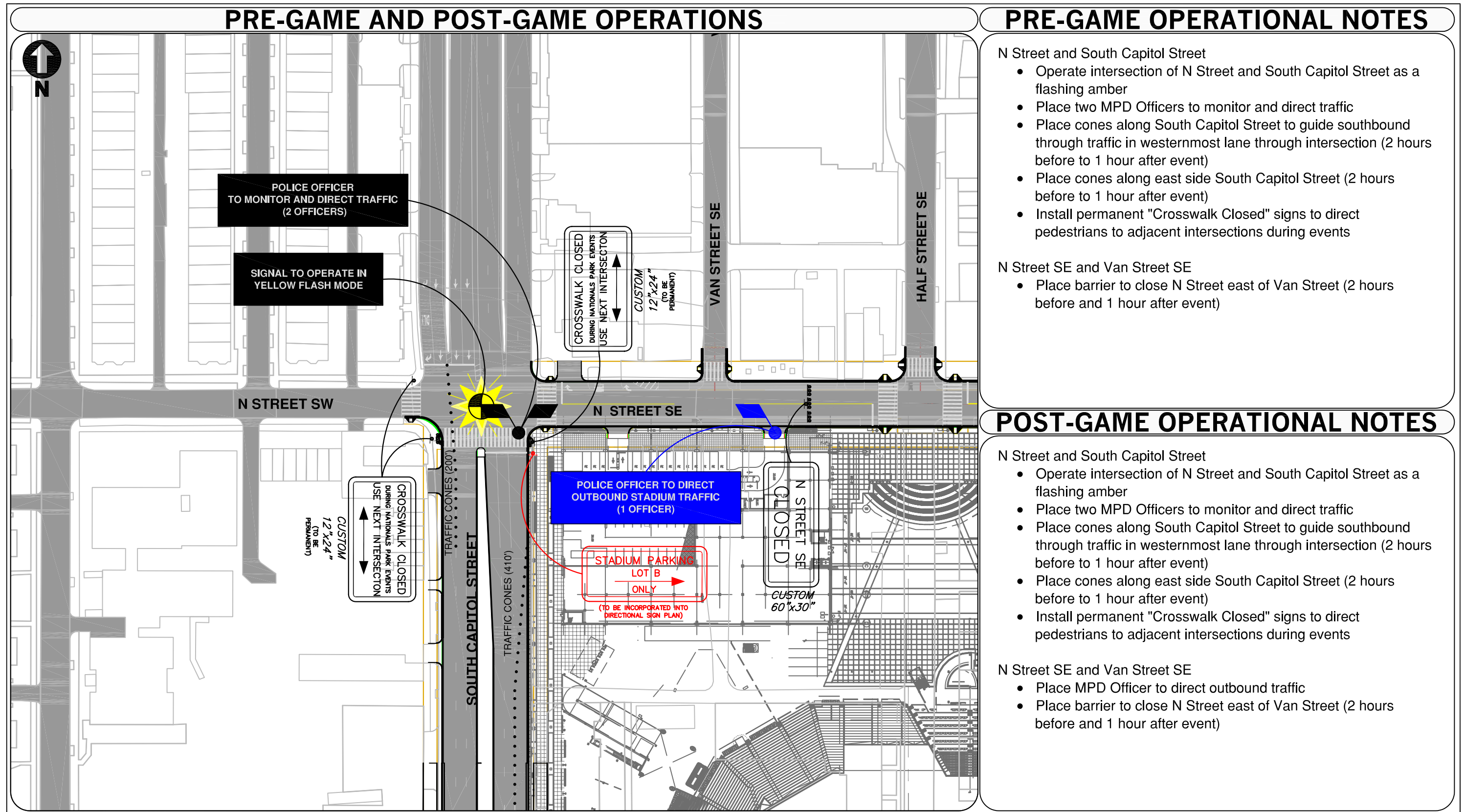
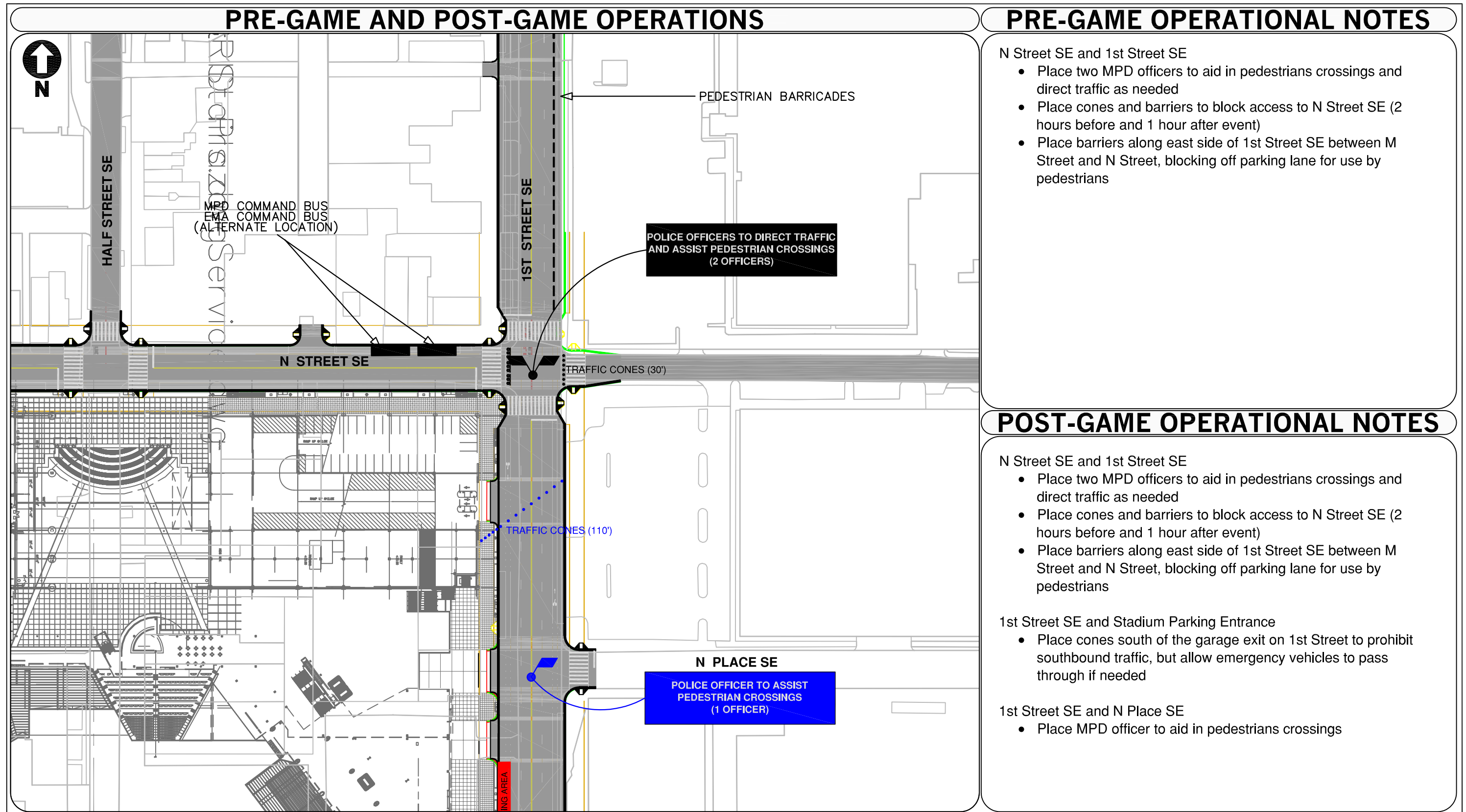


Figure A7

Intersections L & M
 M Street S.E. at 11th Street S.E. / 12th Street S.E.
 Scale: 1"=100'
 March 12, 2008

— PRE-GAME ONLY MITIGATION — POST-GAME ONLY MITIGATION — PRE & POST GAME MITIGATION





PRE-GAME OPERATIONAL NOTES

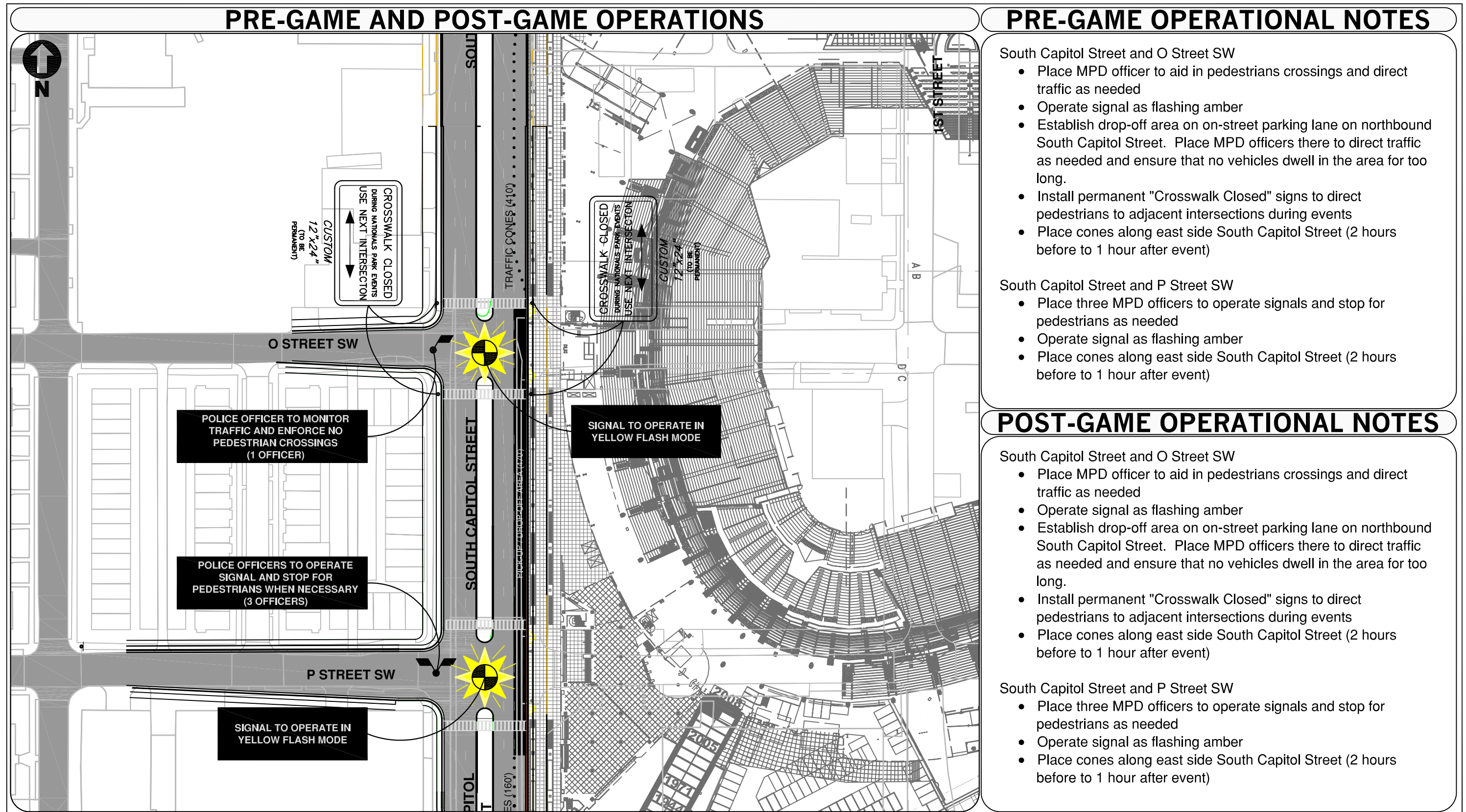
- N Street SE and 1st Street SE
- Place two MPD officers to aid in pedestrians crossings and direct traffic as needed
 - Place cones and barriers to block access to N Street SE (2 hours before and 1 hour after event)
 - Place barriers along east side of 1st Street SE between M Street and N Street, blocking off parking lane for use by pedestrians

POST-GAME OPERATIONAL NOTES

- N Street SE and 1st Street SE
- Place two MPD officers to aid in pedestrians crossings and direct traffic as needed
 - Place cones and barriers to block access to N Street SE (2 hours before and 1 hour after event)
 - Place barriers along east side of 1st Street SE between M Street and N Street, blocking off parking lane for use by pedestrians
- 1st Street SE and Stadium Parking Entrance
- Place cones south of the garage exit on 1st Street to prohibit southbound traffic, but allow emergency vehicles to pass through if needed
- 1st Street SE and N Place SE
- Place MPD officer to aid in pedestrians crossings

Figure A9
 Operations Plan Sheets P & Q
 N Street S.E. at 1st Street / Stadium Parking Entrances / N Place S.E.
 Scale: 1"=100'
 March 12, 2008

█ PRE-GAME ONLY MITIGATION
 █ POST-GAME ONLY MITIGATION
 █ PRE & POST GAME MITIGATION



PRE-GAME OPERATIONAL NOTES

- South Capitol Street and O Street SW**
- Place MPD officer to aid in pedestrians crossings and direct traffic as needed
 - Operate signal as flashing amber
 - Establish drop-off area on on-street parking lane on northbound South Capitol Street. Place MPD officers there to direct traffic as needed and ensure that no vehicles dwell in the area for too long.
 - Install permanent "Crosswalk Closed" signs to direct pedestrians to adjacent intersections during events
 - Place cones along east side South Capitol Street (2 hours before to 1 hour after event)
- South Capitol Street and P Street SW**
- Place three MPD officers to operate signals and stop for pedestrians as needed
 - Operate signal as flashing amber
 - Place cones along east side South Capitol Street (2 hours before to 1 hour after event)

POST-GAME OPERATIONAL NOTES

- South Capitol Street and O Street SW**
- Place MPD officer to aid in pedestrians crossings and direct traffic as needed
 - Operate signal as flashing amber
 - Establish drop-off area on on-street parking lane on northbound South Capitol Street. Place MPD officers there to direct traffic as needed and ensure that no vehicles dwell in the area for too long.
 - Install permanent "Crosswalk Closed" signs to direct pedestrians to adjacent intersections during events
 - Place cones along east side South Capitol Street (2 hours before to 1 hour after event)
- South Capitol Street and P Street SW**
- Place three MPD officers to operate signals and stop for pedestrians as needed
 - Operate signal as flashing amber
 - Place cones along east side South Capitol Street (2 hours before to 1 hour after event)

Figure A10
 Operations Plan Sheet R & S
 South Capitol Street at O Street S.E. / P Street S.E.
 Scale: 1"=100'
 March 12, 2008

— PRE-GAME ONLY MITIGATION
 — POST-GAME ONLY MITIGATION
 — PRE & POST GAME MITIGATION

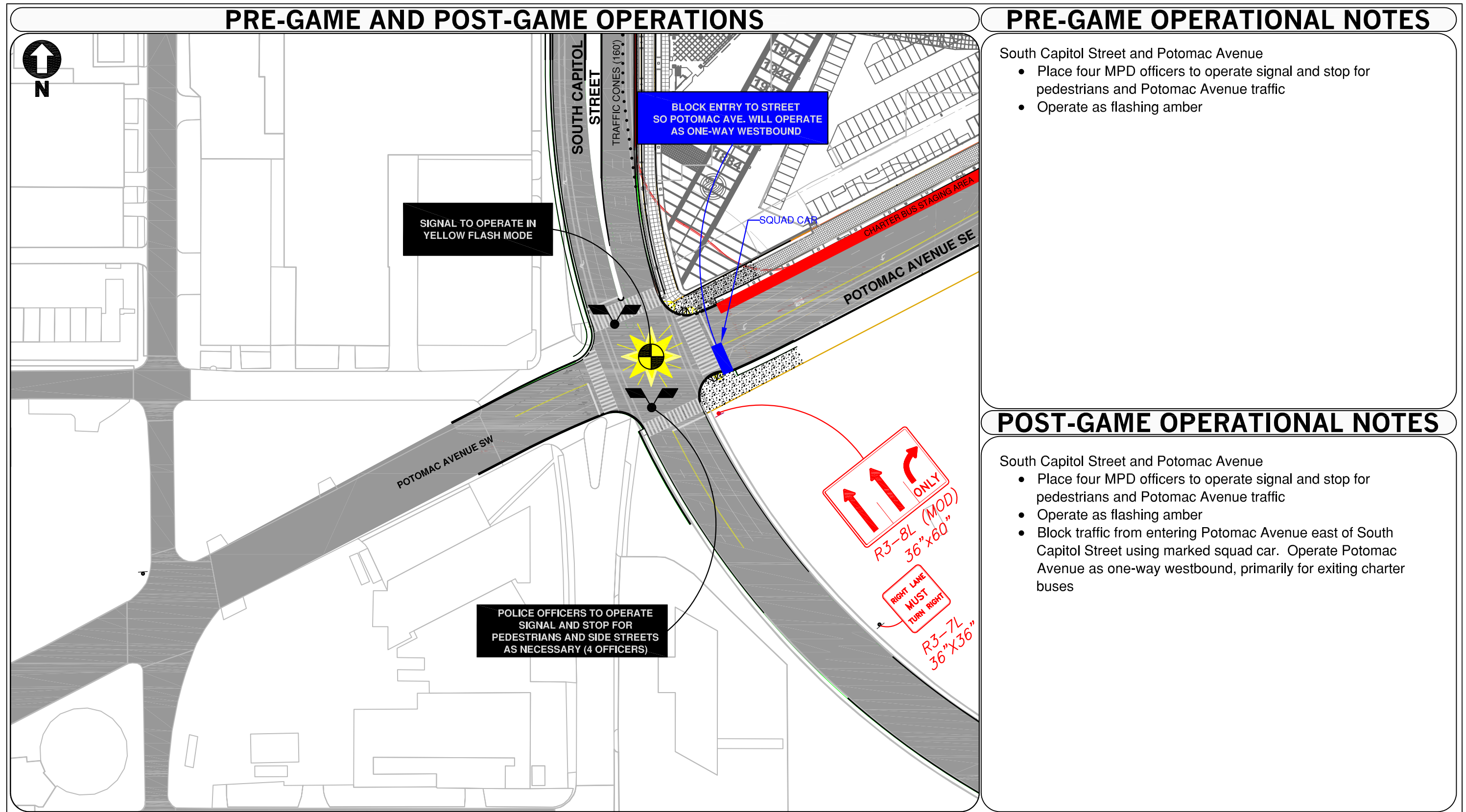
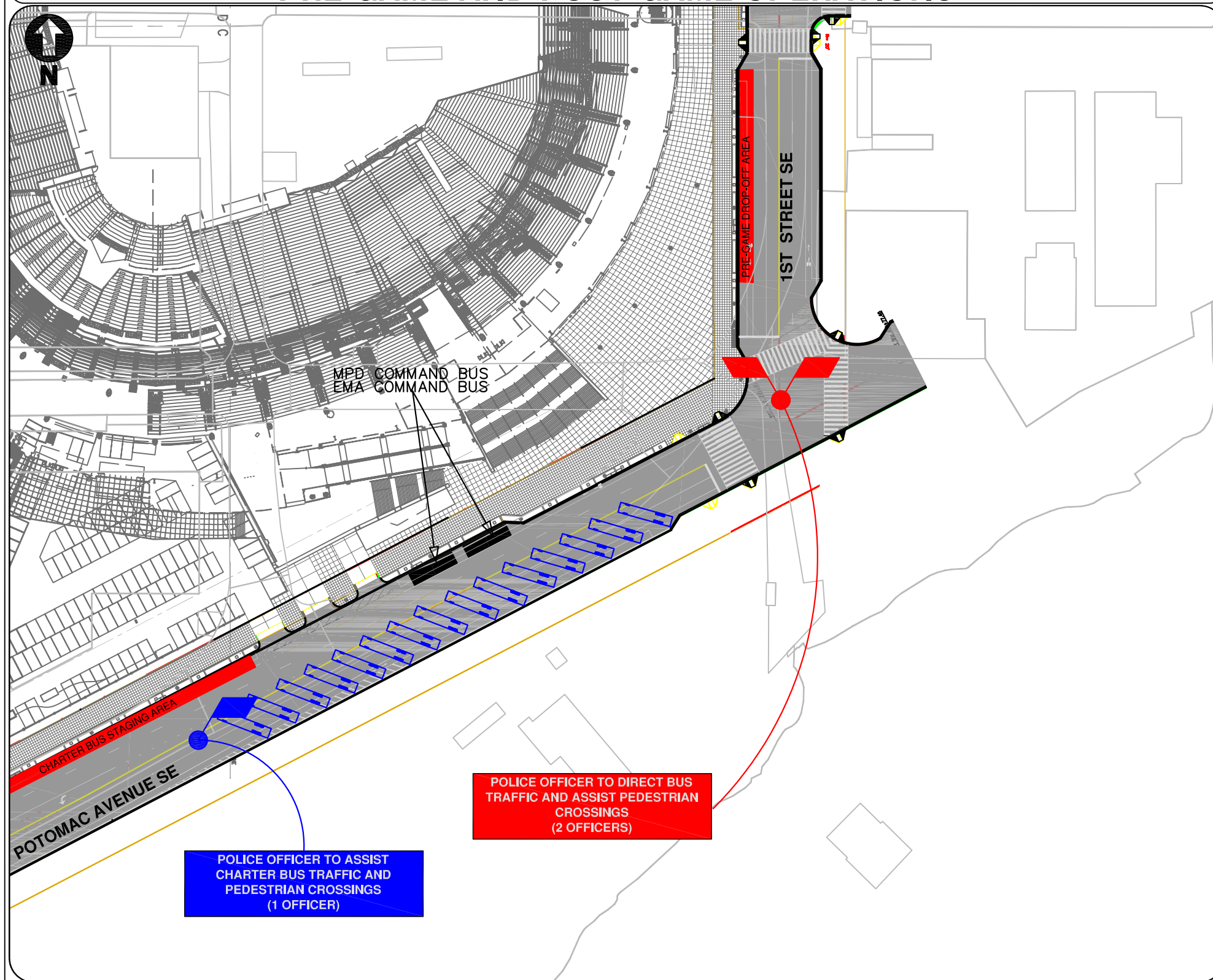


Figure A11
Operations Plan Sheet T
South Capitol Street at Potomac Avenue S.E.
Scale: 1"=100'
March 12, 2008

— PRE-GAME ONLY MITIGATION
 — POST-GAME ONLY MITIGATION
 — PRE & POST GAME MITIGATION



PRE-GAME AND POST-GAME OPERATIONS



PRE-GAME OPERATIONAL NOTES

- Potomac Avenue SE and 1st Street SE
- Place two MPD officers to direct buses and aid in pedestrian crossings
 - Charter buses will be directed southbound on 1st Street SE. Secondary charter bus drop-off will be located on Potomac Avenue as shown.

POST-GAME OPERATIONAL NOTES

- Potomac Avenue SE and 1st Street SE
- Place MPD officer to assist charter bus traffic and aid in pedestrian crossings
 - Operate Potomac Avenue as one-way westbound, primarily for exiting charter buses

Figure A12
 Operations Plan Sheet U
 Potomac Avenue S.E. at 1st Street S.E.
 Scale: 1"=100'
 March 12, 2008

█ PRE-GAME ONLY MITIGATION
 █ POST-GAME ONLY MITIGATION
 █ PRE & POST GAME MITIGATION

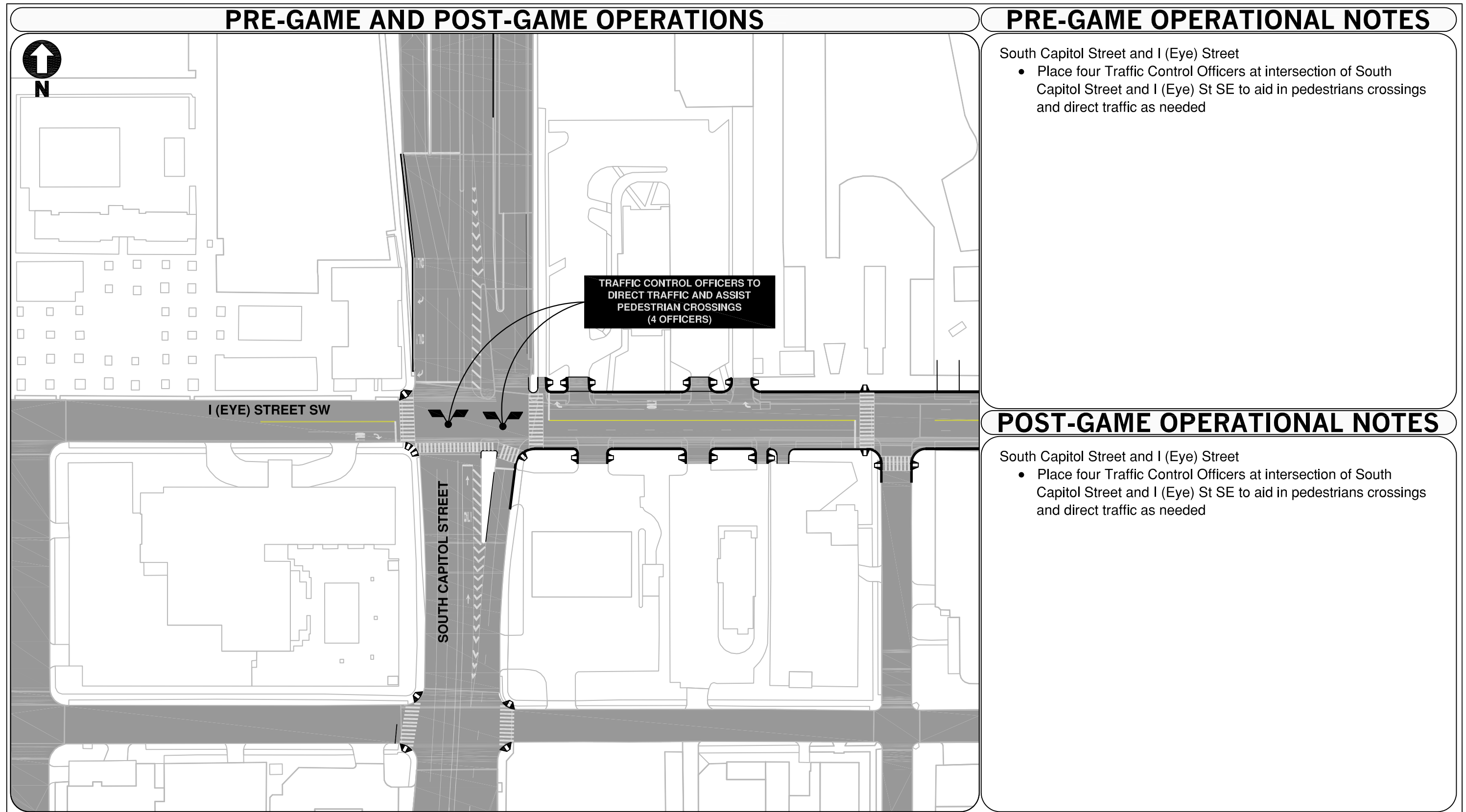


Figure A13
 Operations Plan Sheet V
 South Capitol Street at I (Eye) Street
 Scale: 1"=100'
 March 12, 2008

█ PRE-GAME ONLY MITIGATION
 █ POST-GAME ONLY MITIGATION
 █ PRE & POST GAME MITIGATION

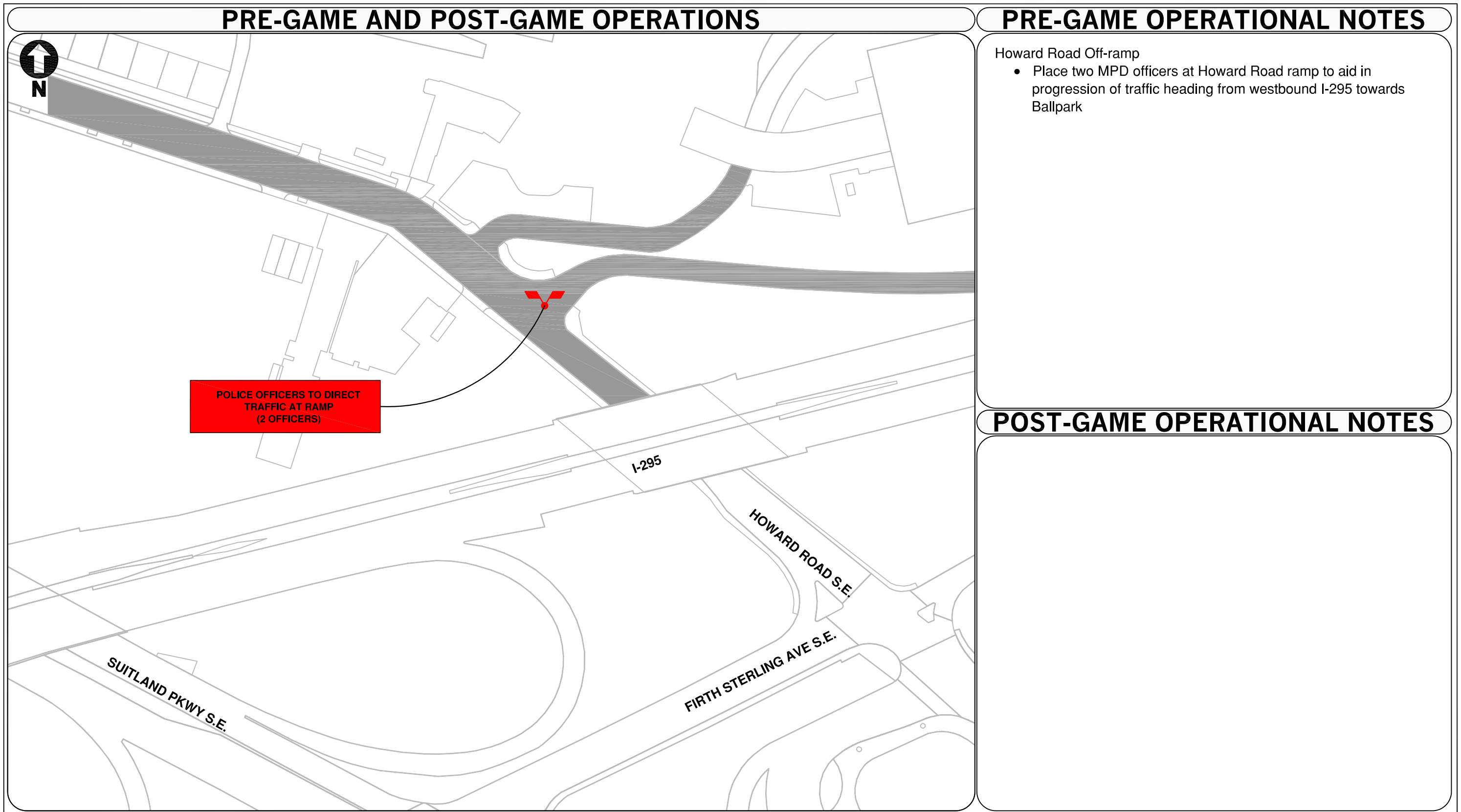


Figure A14
 Operations Plan Sheet W
 Howard Road Off-Ramp
 Scale: 1"=100'
 March 12, 2008

█ PRE-GAME ONLY MITIGATION
 █ POST-GAME ONLY MITIGATION
 █ PRE & POST GAME MITIGATION

APPENDIX B: VARIABLE MESSAGE SIGN PLAN

Appendix B of the TOPP presents a suggested signing program for stadium events utilizing the network of permanent variable message signs (VMS) already in use on many of the primary roads in and around the Washington, DC metro region. A number of portable VMS trailers are also recommended at key locations on the local road network surrounding the stadium to provide additional stadium event information to motorists as they approach the Ballpark.

The VMS signing plan has several goals:

- To provide motorists with important route guidance information that distributes and disperses inbound stadium traffic among the various arrival routes to avoid overloading the capacity of any individual route;
- To inform non-stadium traffic of the fact that there is a major event occurring, allowing them to alter their route to avoid the Ballpark area;
- To minimize the amount of unnecessary travel around the ballpark; and
- To provide event planners and operators with an inventory of existing VMS signs throughout the DC metro region, for use making future decisions about modified sign messages.

The VMS sign plan has 4 pages:

- 1) The first page, Regional VMS Index, provides an inventory of all existing VMS signs within the DC metro area. It also provides the names and contact information of the appropriate personnel at the Maryland, Virginia and DC Departments of Transportation who are responsible for the VMS boards in their respective jurisdictions
- 2) The second page, Inbound Pre-Game VMS Signing Plan - Regional, provides proposed sign messages for 12 existing permanent VMS boards on the major regional travel routes that motorists are expected to use to reach the Ballpark
- 3) The third page, Inbound Pre-Game VMS Signing Plan - Local, provides proposed sign messages for six (6) permanent and seven (7) portable VMS boards on the major local roads within the vicinity of the Ballpark. There is a possibility that DDOT will have remote access to the VMS signs, so they can be revised during patron ingress and egress. Shown in this illustration are the locations of some VMS signs that can be used to display incident management messages.
- 4) The fourth page, Non-Event Local VMS Signing Plan, provides proposed sign messages that could be posted on five (5) portable VMS boards on roads surrounding the Ballpark. These signs are intended to inform motorists of upcoming stadium events with the goal of modifying their travel times or routes on the day of the events, providing additional roadway capacity for stadium traffic.

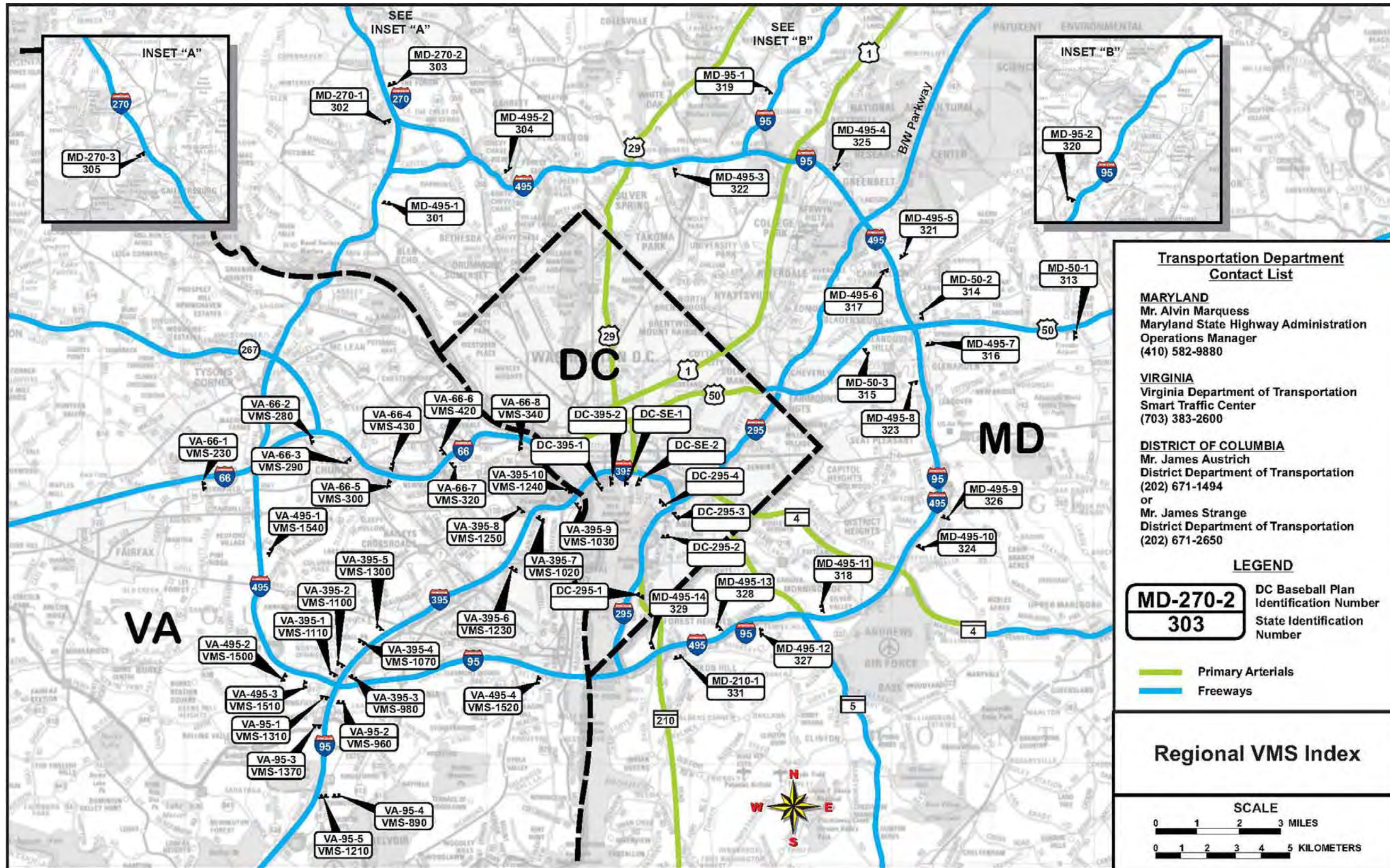


Figure B1: VMS Plan – Regional VMS Index

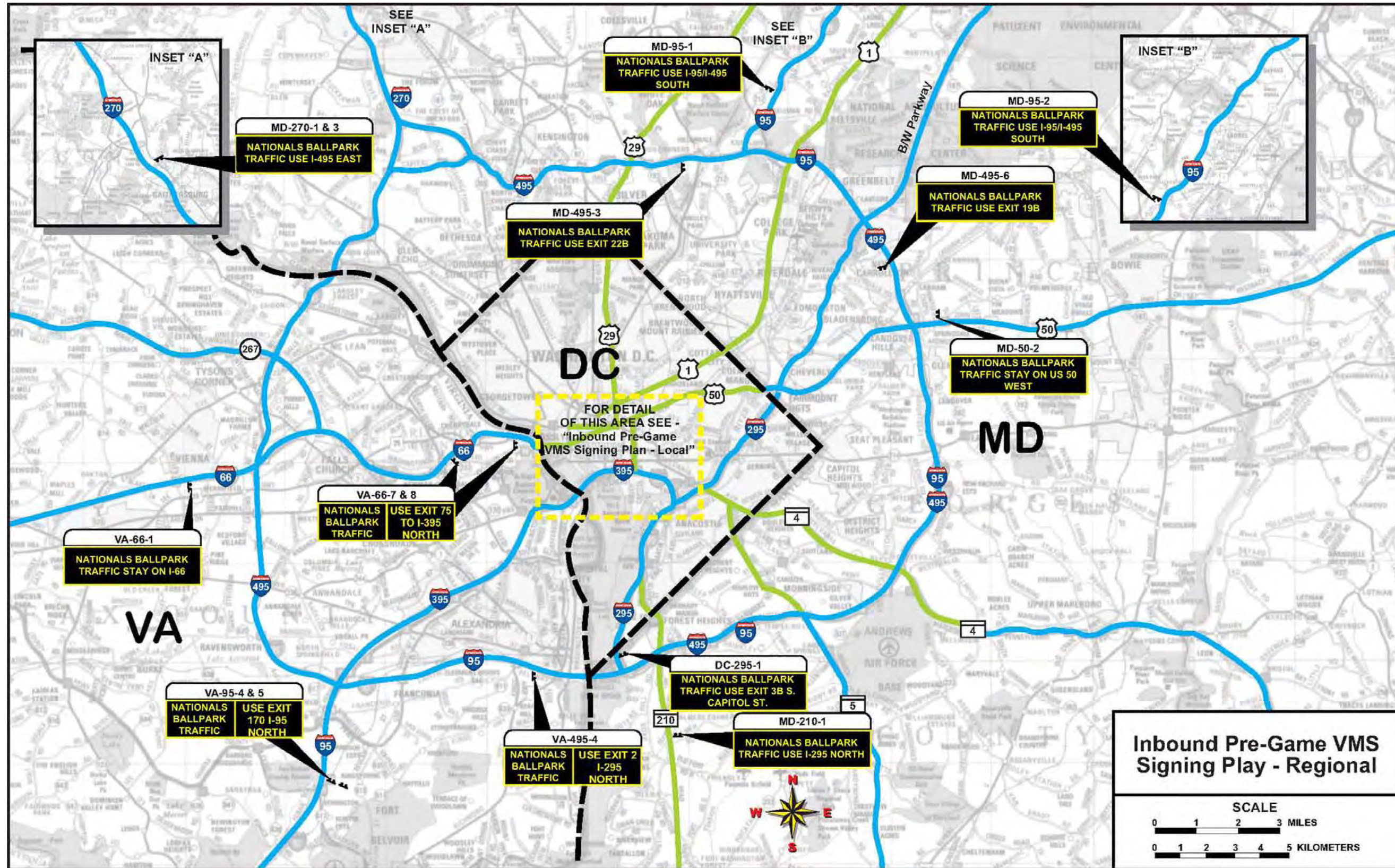


Figure B2: VMS Plan –Pre-Game VMS Signing Plan - Regional

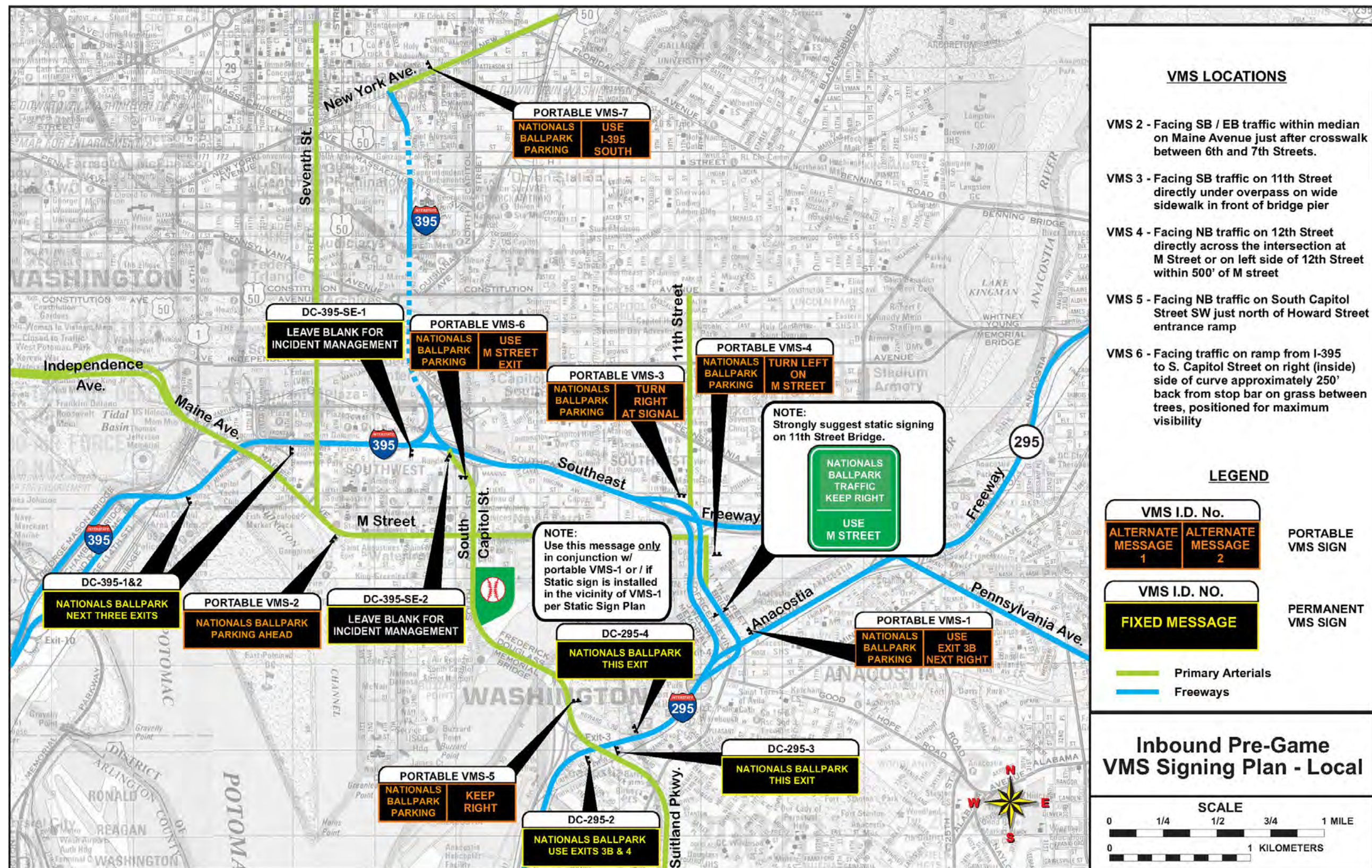


Figure B3: VMS Plan –Pre-Game VMS Signing Plan - Local

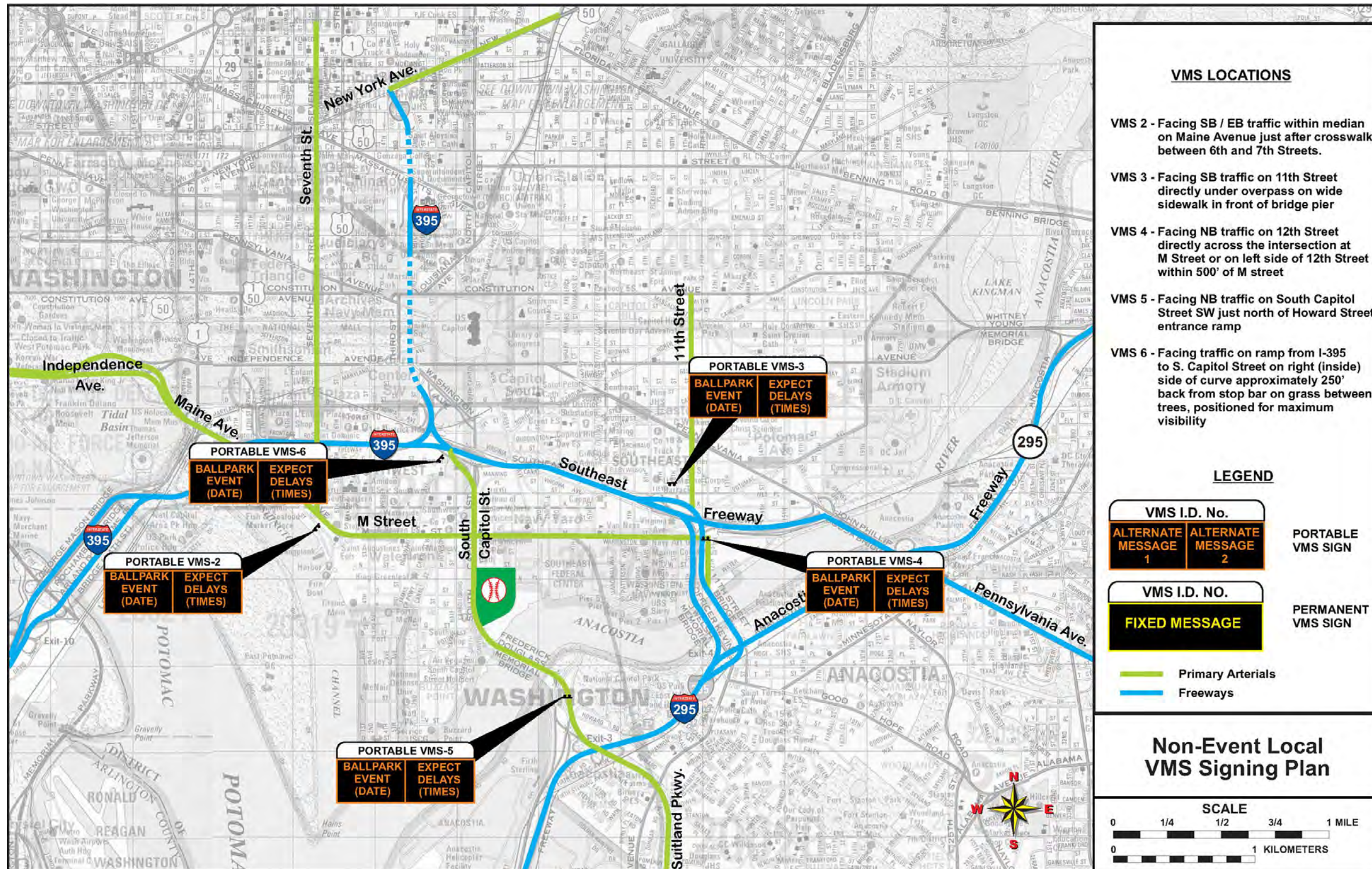


Figure B4: VMS Plan – Non-Event Local Signing Plan