

# Read Me

---

## DDOT V8 Standard CAD Manual and DDOT Workspace Installation

This document provides an introduction to the DDOT V8 CAD Standards Manual (the CAD Manual) and the DDOT Workspace (the Workspace) that is an adaptation of the Maryland SHA Workspace and has been developed for use with MicroStation V8. The CAD Manual is intended to guide the user through the process of developing CAD projects for DDOT. The CAD Manual is delivered on this CD, and can be accessed from the CD's autorun menu. The CAD Manual is also included in the Workspace in the folder *..\Workspace\Documentation\*. From within the Workspace, the CAD Manual can be loaded from the **Help** menu, which is found on the DDOT [Main Menu](#).

The Workspace helps users manage the V8 drafting environment by delivering standard elements such as resource files, cells and level libraries, as well as several custom tools and macros developed by the MD SHA for V8. Details are provided for both users and administrators. This document's major sections are listed below:

- 1) [Minimum System Requirements](#)
- 2) [Workspace Setup](#)
- 3) [Using the DDOT Workspace](#)
- 4) [Workspace Options](#)
- 5) [Workspace Updates](#)

### Minimum System Requirements

The January 2005 release of the V8 CAD Standards has been designed to run on **MicroStation V8.05.00.64**. Please refer to Bentley documentation for product system requirements.

### Workspace Setup

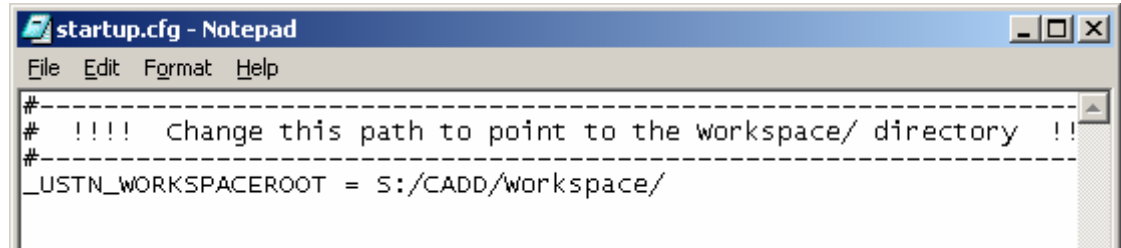
For external consultant users, the DDOT Workspace is provided on the accompanying CD and is also available for web download. The workspace provides the core functionality of DDOT's network workspace, minus certain CAD management aspects.

---

**NOTE:** It is recommended that the DDOT Workspace be installed on the network, although installation on the local machine will also work.

---

- 1) Unzip the files to a network or local directory.
- 2) Open the file `..\Workspace\startup.cfg` in a text editor.



- 3) Redefine the **\_USTN\_WORKSPACEROOT** variable to point to the location of the Workspace folder as determined in step 1, then save and close the file.
- 4) Create a **desktop shortcut** to V8.
- 5) Right-click the shortcut and select **Properties**.
- 6) When the Properties box opens, append the following text to the Target field (note that it begins with a space):

`-wc"[path]\Workspace\startup.cfg"`

where [path] defines the full directory path of the Workspace.

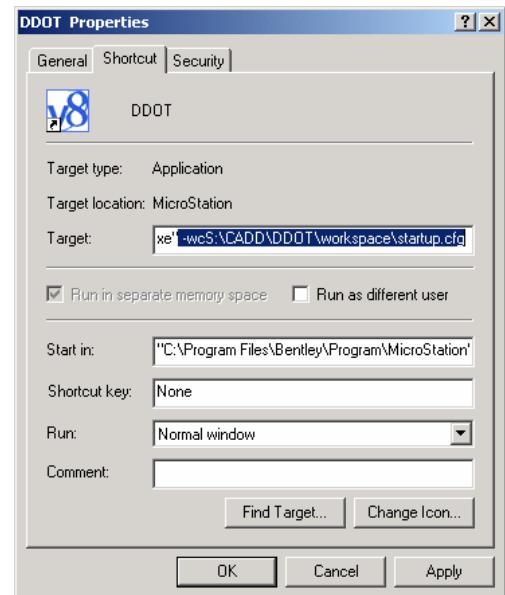
**eg:** `-wc" S:\CAD\Workspace\startup.cfg"`

**Note:** There is no space between *wc* and the quotation mark.

Click **OK**.

You should now have a desktop shortcut that will launch the DDOT Workspace. Users should take care to always load design files for DDOT projects through the shortcut, otherwise the following workspace options will not be available.

For internal DDOT users the standard, Bentley configuration file *mslocal.cfg* should be replaced by the one found in the main `\Workspace\` folder of these standards. This file should replace the local file found in the folder: `..\Program Files\Bentley\Program\Microstation\config\`. The original *mslocal.cfg* file should be backed up before replacing it. Loading this file provides a layer of

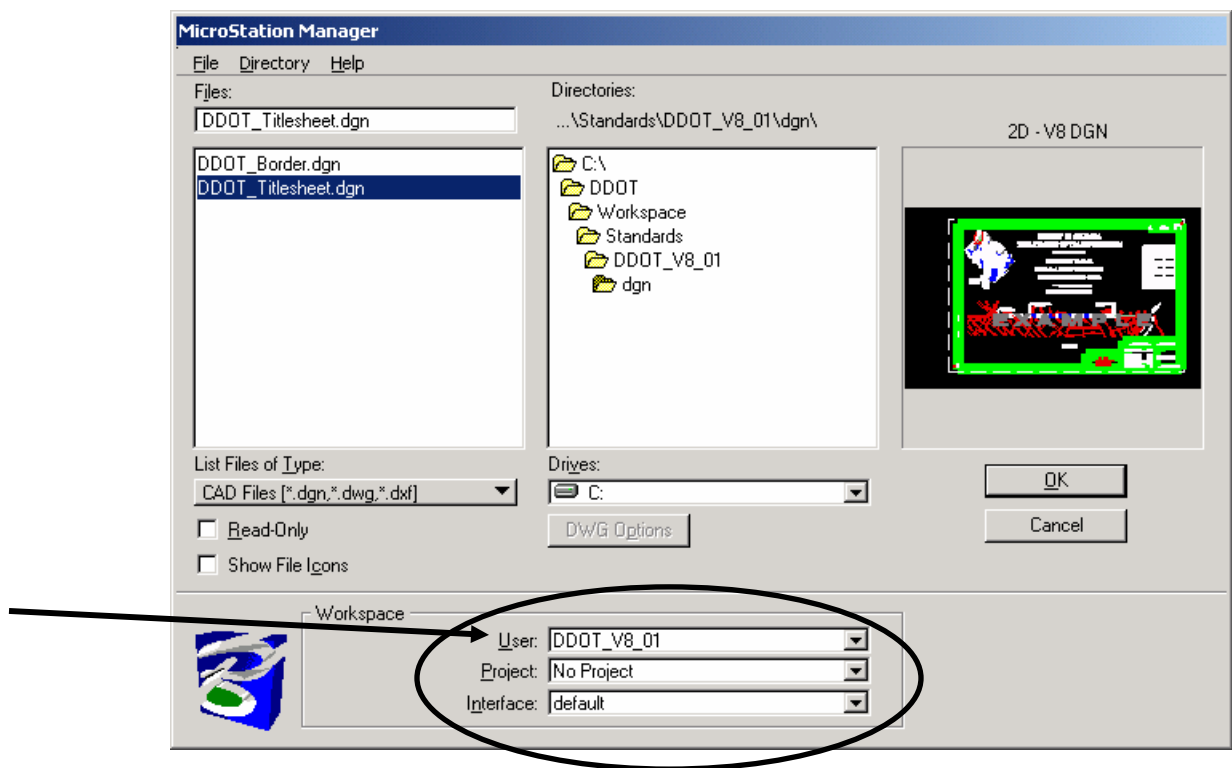


redundancy that ensures the user will always start MicroStation V8 with the DDOT Workspace loaded. *This step is optional for consultants, as they may have additional workspaces running in their environment, and would not want to restrict users to only one workspace.*

## Using the DDOT Workspace

The workspace delivered with this CAD Manual has tools that help increase productivity as well as help users comply with the CAD Standards. As stated before, the Workspace and tools were developed by MDSHA and have been adopted by DDOT with modifications to better fit the needs of DDOT personnel.

When you start MicroStation using the DDOT Workspace, the MicroStation Manager dialog box will appear with various options in the Workspace section:



---

**NOTE:** Generally speaking, the only option that needs to be selected is that of **User**, to select the proper CAD Standard version. As of September 2005, the User workspace that should be used for new projects is “**DDOT\_V8\_01**”. For notes on other User Options, refer to the [Workspace Options](#) section.

---

Upon loading MicroStation, the user will immediately know that they are in the DDOT Workspace by the presence of the DDOT Main Menu and Toolbox.



The **Main Menu** has pulldowns that allow the user to select additional discipline-specific menus, set drawing scale factors and access various custom tools to assist in the drafting process. The DDOT Workspace does not disable any of the MicroStation tools delivered with the software, but offers additional tools that help users adhere to various requirements of the CAD standards such as element symbology, level name, file name, etc...

Resource files that are specific to DDOT could be used without the Workspace, however, the Workspace provides a robust menu driven interface that aimed at increasing efficiency and accuracy. The DDOT specific resource files can be found in the following folders of the Workspace, and would all begin with or contain “DDOT” or “ddot”. Other resources files were borrowed from the MD SHA Workspace.

```

\Workspace\Standards\DDOT_V8_01\cell\
\Workspace\Standards\DDOT_V8_01\data\
\Workspace\Standards\DDOT_V8_01\dgn\
\Workspace\Standards\DDOT_V8_01\dgnlib\
\Workspace\Standards\DDOT_V8_01\seed\
\Workspace\Standards\DDOT_V8_01\symb\

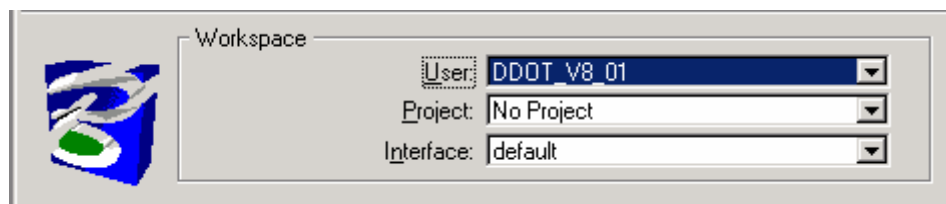
```

## Workspace Options

The combination of [User](#), [Project](#) and [Interface](#) determines the user’s working environment for MicroStation. The significance of these options is explained below.

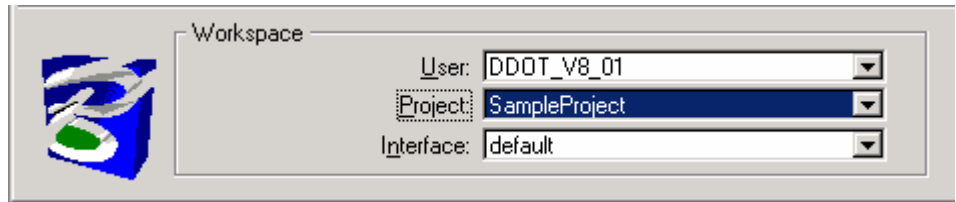
### User

The user has the choice of two user configurations. Choosing **DDOT\_V8\_01** delivers the new V8 CAD standards and should be selected for any new projects that are to be performed using the V8 design file format (unlimited named levels, etc). V7 files will always be opened as read/only using this configuration. Choosing **DDOT\_V7\_01** will allow the user to edit MicroStation V7 files.



## Project

The DDOT Workspace does not rely on the Project setting to manage project design files and resources. Rather, this setting can be used in-house by divisions to define certain discipline-specific settings and standards, or by consultants to customize project specific settings.



---

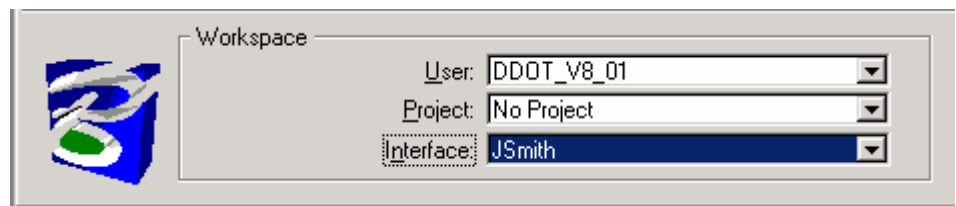
**NOTE:** For most DDOT users, the Project setting will be preset based on user login and does not need to be changed!

---

External consultants may continue to use the Project configuration as needed to define specific project working directories, etc.

## Interface

The choice of Interface determines what custom pull down menus and toolboxes a user will receive. Depending how it is set up within the organization, this setting could reflect the user's network login name, which would allow individual customization.



---

**NOTE:** For DDOT users, the Interface setting will come up as default for first time use, and then change to the NT login name for all future sessions!

---

For the consultant workspace, the user interface variable is not explicitly defined so users should continue to see the same Interface options that they normally would.

## Workspace Updates

It is expected that updates to the DDOT Workspace will be provided periodically. Such updates may include additions to the feature tables, new cell libraries, level libraries, barmenus, custom tools, etc. DDOT will be providing these updates across the web, though the exact site address is currently unknown.

The DDOT version of the Workspace is based in large part on the MD SHA workspace version 1.04 (July 2005). As MD SHA releases new updates to their workspace, DDOT will make efforts to update the DDOT Workspace as well. If users notice features that they would like updated in the DDOT Workspace, they are encouraged to notify Mr. Ardeshir Nafici, Chief, Program Management Support Division, IPMA at (202)671-4689