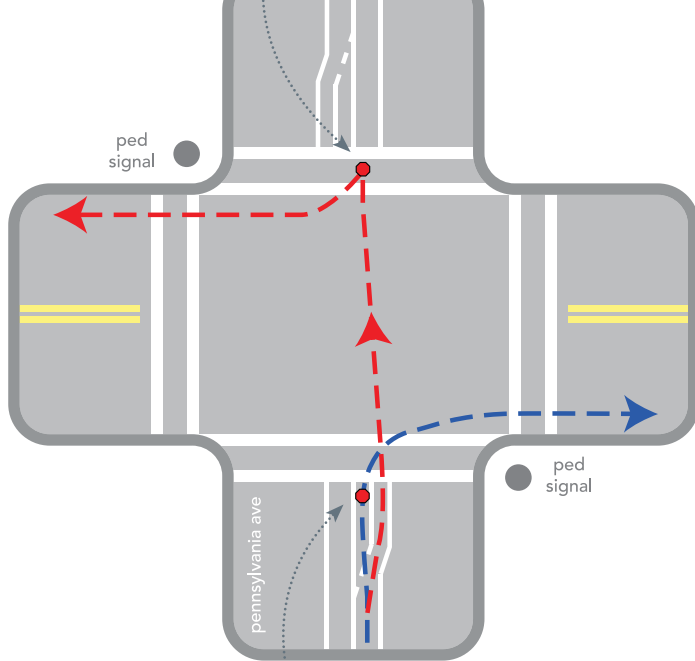


# Train.

**Metrorail:** Bicycles are welcome on Metrorail (limited to two bicycles per car) weekdays except 7 a.m. to 10 a.m. and 4 p.m. to 7p.m. Bicycles are welcome all day Saturday and Sunday as well as most holidays (limited to four bicycles per car). Bicycles are not permitted on Metrorail on July 4th and other special events or holidays when large crowds use the system. To access the stations, use the elevator rather than the escalator.

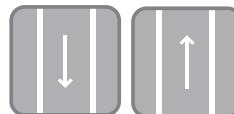
**Bike Parking:** Many Metro stations have bicycle parking facilities, including racks and lockers. Bicycle lockers are available for \$200 for one year plus a \$10 key deposit. To rent a locker call 202.962.1116. All locker rentals are subject to availability.

**Bike on Bus:** Both Metrobus and Ride On (in Montgomery County) have bicycle racks that carry up to two bicycles per bus.



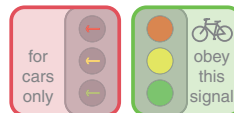
STOP here and wait for pedestrian WALK signal to turn right.

1



Bike lanes are for travel in one direction only. Follow the arrows. Ride in the same direction as car traffic.

2



Obey applicable traffic signals.

3



Use crosswalks and follow pedestrian signals to turn.