

INFRASTRUCTURE PROJECT

MANAGEMENT ADMINISTRATION (IPMA)

IPMA is responsible for the design, engineering and construction of roadways, bridges, traffic signals and alley projects in the District of Columbia. IPMA also manages special construction projects and all roadway assets. The bulk of the work in this Administration is managed and executed by ward-based teams. IPMA also includes the following divisions:

Design & Project Management Division

The Design & Project Management Division is divided into four ward-based teams that design and construct transportation infrastructure projects.

They manage the condition of the streets, sidewalks, bridges and alleys.

Anacostia Waterfront Initiative/Special Projects Division

DDOT leads the effort in transforming the Anacostia Riverfront by planning, designing, and constructing transportation infrastructure in the area.

This division manages AWI and special projects such as the baseball stadium area infrastructure and stormwater management.

Storm Water Management Branch

"Greening" the district's transportation infrastructure to meet new initiatives, environmental objectives, and regulations by ensuring that all DDOT projects minimize storm water runoff.

Asset Management Analysis Division

The Asset Management Analysis Division protects the quality of the District's streets, bridges, tunnels, alleys and sidewalks. The division maintains an inventory and condition assessment of all our assets and tests and evaluates all construction materials used in DDOT projects.

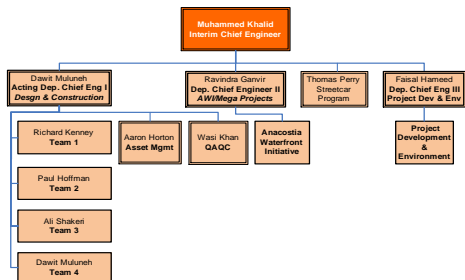
Quality Assurance and Quality Control Branch

Evaluates construction materials; performs engineering investigation of materials related problems; geotechnical engineering; specification standardization; calibration of testing apparatus and procedures; utilization of new materials for construction projects and response to citizen complaints concerning vibration and drainage.

Project Development & Environment Division

The division is responsible for work zone reviews, utility coordination, right of way management, preliminary engineering and design, constructability reviews, major projects coordination, environmental reviews and approvals, sustainability and climate change adaptation. The project development process, environmental policies and processes, and Interstate access and approval process are also maintained by this division.

Infrastructure Project Management Administration (IPMA) Updated June 2014



IPMA-Teams

- New capital design and construction projects (bridge, roadway, new streetlights, signals)
- Service requests related to new construction or requiring regulation (new stop sign, speed bump, traffic sign, sidewalk, left turn lane, etc.)
- Work zone and public space permit review (traffic control plans, etc.)
- Curb control (decide what is residential or metered parking, RFP signs, etc.)

IPMA-Asset Management

- Manage contracts for tunnels, bridges, local and federal streets
- Resurfacing projects on sidewalks, alleys, streets

IPMA-QA/QC

- Evaluates construction materials
- Performs engineering investigation of materials related problems
- Geotechnical engineering
- Specification standardization
- Calibration of testing apparatus and procedures
- Utilization of new materials for construction projects
- Response to citizen complaints concerning vibration and drainage

AWI

- Plan, design, and construction of transport infrastructure
- Storm Water Mgt
 - Promoting green friendly design

PD&E

- Work zone reviews, utility coordination and ROW management
- Environmental policies and processes