



Rock Creek Park Multi-Use Trail & Pedestrian Bridge Construction Update Virtual Community Meeting

September 9, 2021

AGENDA



- Welcome
- Project Team
- Project Overview
- Project Timeline
- Construction Progress
- Upcoming Activities
- What to Expect During Construction
- Safety/ Traffic Control
- Project Contacts

PROJECT TEAM



DDOT

Zahra Dorriz, Program Manager
Omid Ghaemi, Project Manager
Michael Alvino, Bicycle Program



National Park Service

Michael McMahon, NPS Project Manager



Stantec

Steve Zeender, Project Designer



HNTB / JDos

Andy Graf, Construction Manager

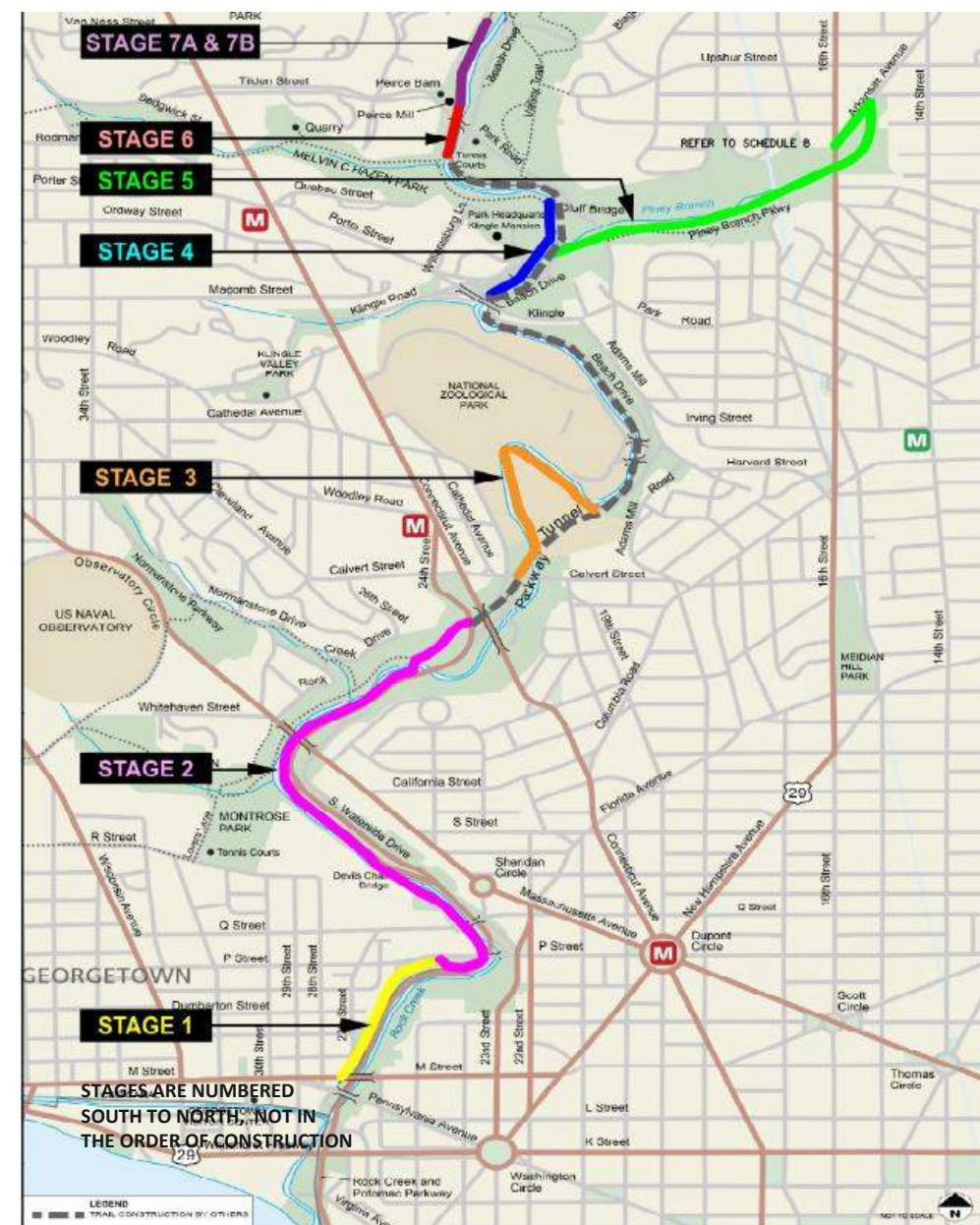
Shana Vieira, Public Outreach



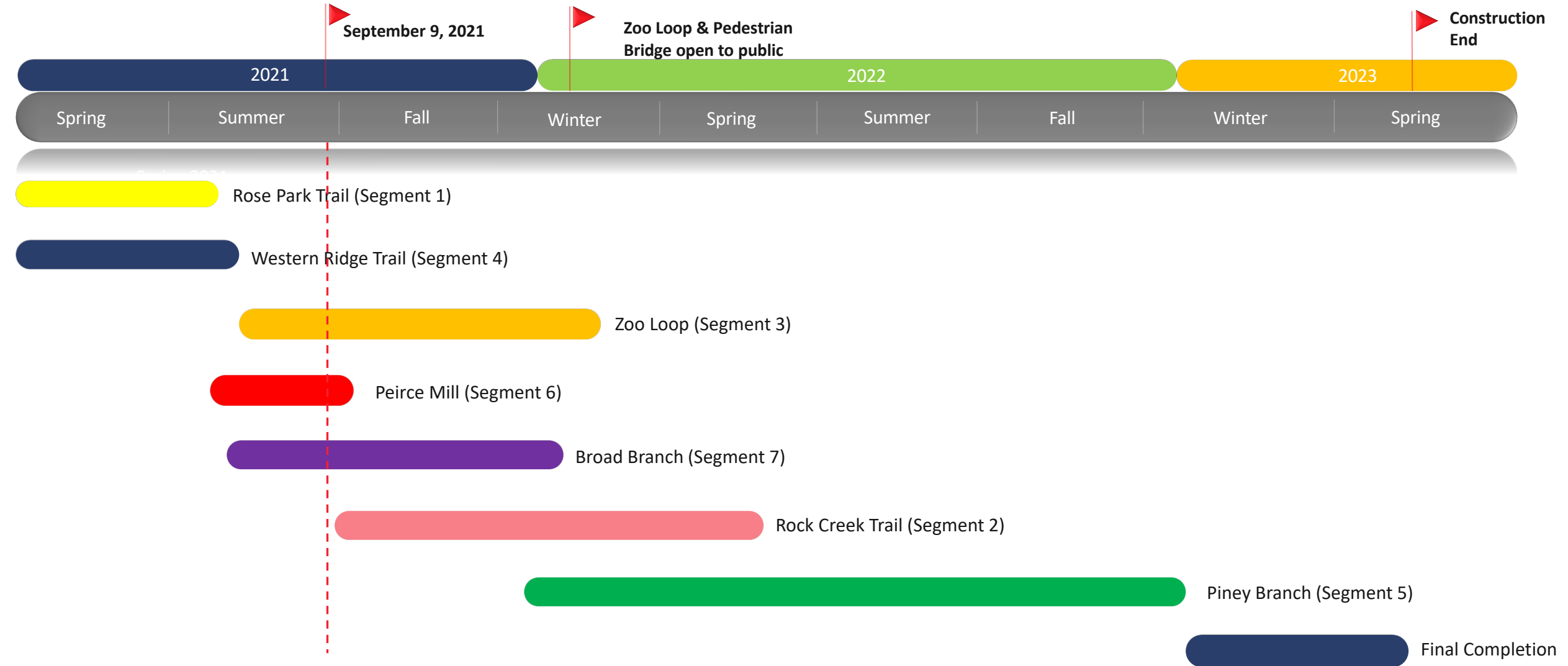
Capitol Paving of D.C.
Contractor

PROJECT OVERVIEW

- 3.7 miles of Rock Creek Park Multi-Use Trail
 - P Street NW in Georgetown to Broad Branch Road NW
- New 0.8-mile trail along Piney Branch Parkway
- New 110-foot pedestrian bridge south of Zoo Tunnel
- New 0.2-mile trail from Peirce Mill to Broad Branch
- Reconstruction of 0.4-mile segment of Rose Park Trail
- Project spans wards 1, 2, 3, and 4
- 7 segments of construction

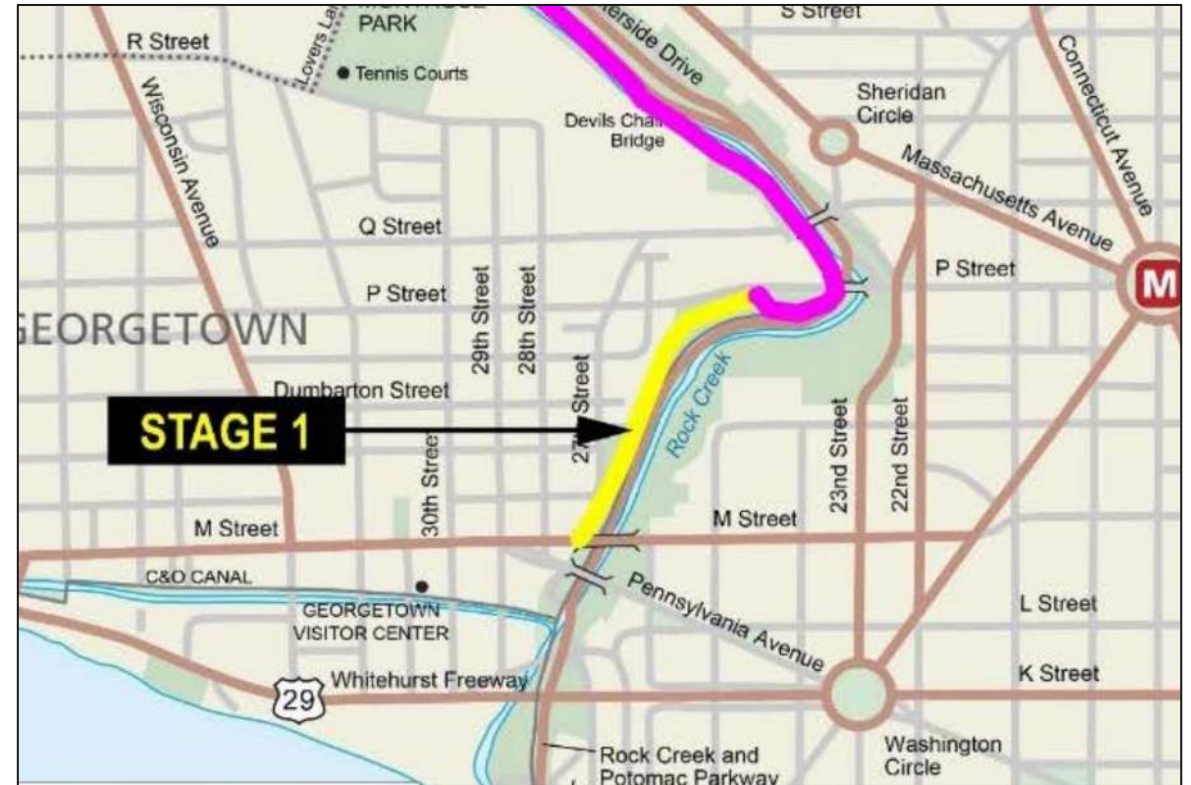


CONSTRUCTION TIMELINE



CONSTRUCTION PROGRESS – Segment 1 (Rose Park Trail)

- Construction began Spring 2021
- Trail completed and re-opened July 2021
- New trail lighting to be installed this month



CONSTRUCTION PROGRESS – Segment 1 (Rose Park Trail)



CONSTRUCTION PROGRESS – Segment 1 (Rose Park Trail)



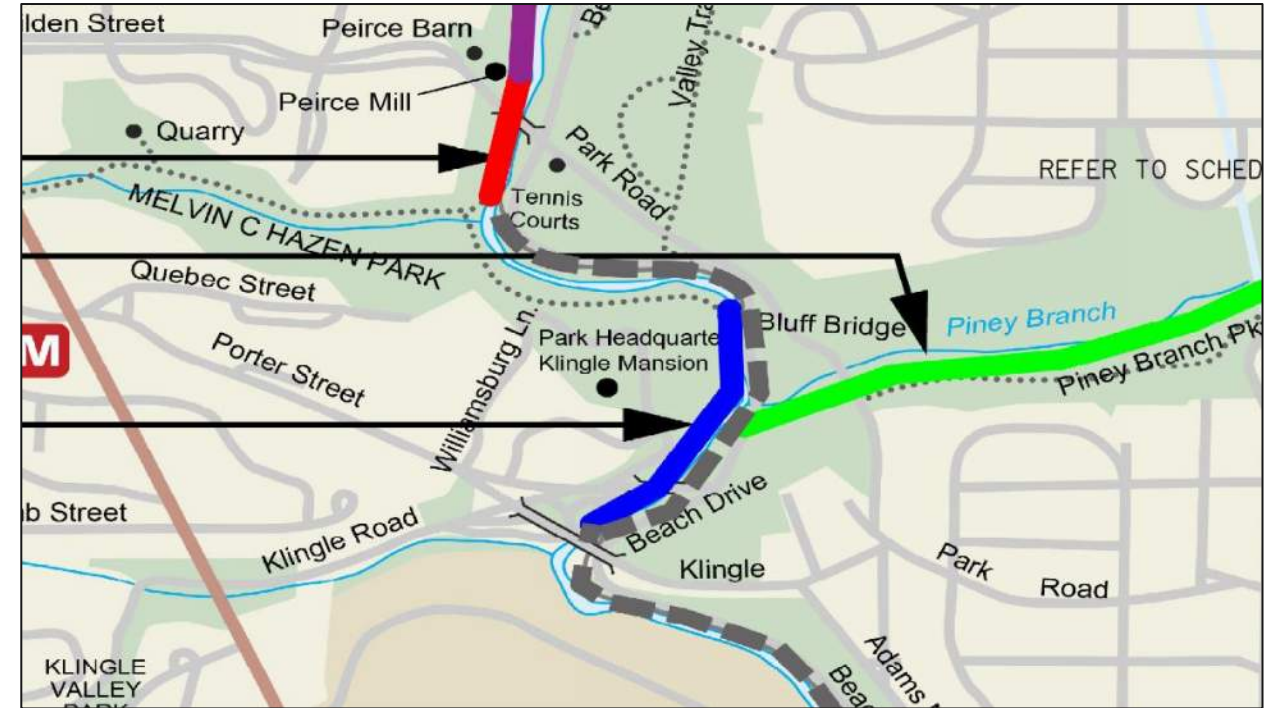
6-foot wide trail with vinyl fencing



P Street NW connection to Rock Creek Trail

CONSTRUCTION PROGRESS – Segment 4 (Western Ridge Trail)

- Construction Began Spring 2021
- Trail completed and re-opened July 2021



Segment 4 highlighted in blue

CONSTRUCTION PROGRESS – Segment 4 (Western Ridge Trail)



Permeable asphalt paving

CONSTRUCTION PROGRESS – Segment 4 (Western Ridge Trail)



Storm water drainage improvements

CONSTRUCTION PROGRESS – Segment 4 (Western Ridge Trail)



Trail with new fencing and pavement markings

PROJECT ACTIVITIES – Segment 6 (Peirce Mill)

- Active construction zone with trail detour in place
- Construction started June 2021
- Replacement of wooden pedestrian bridge in progress



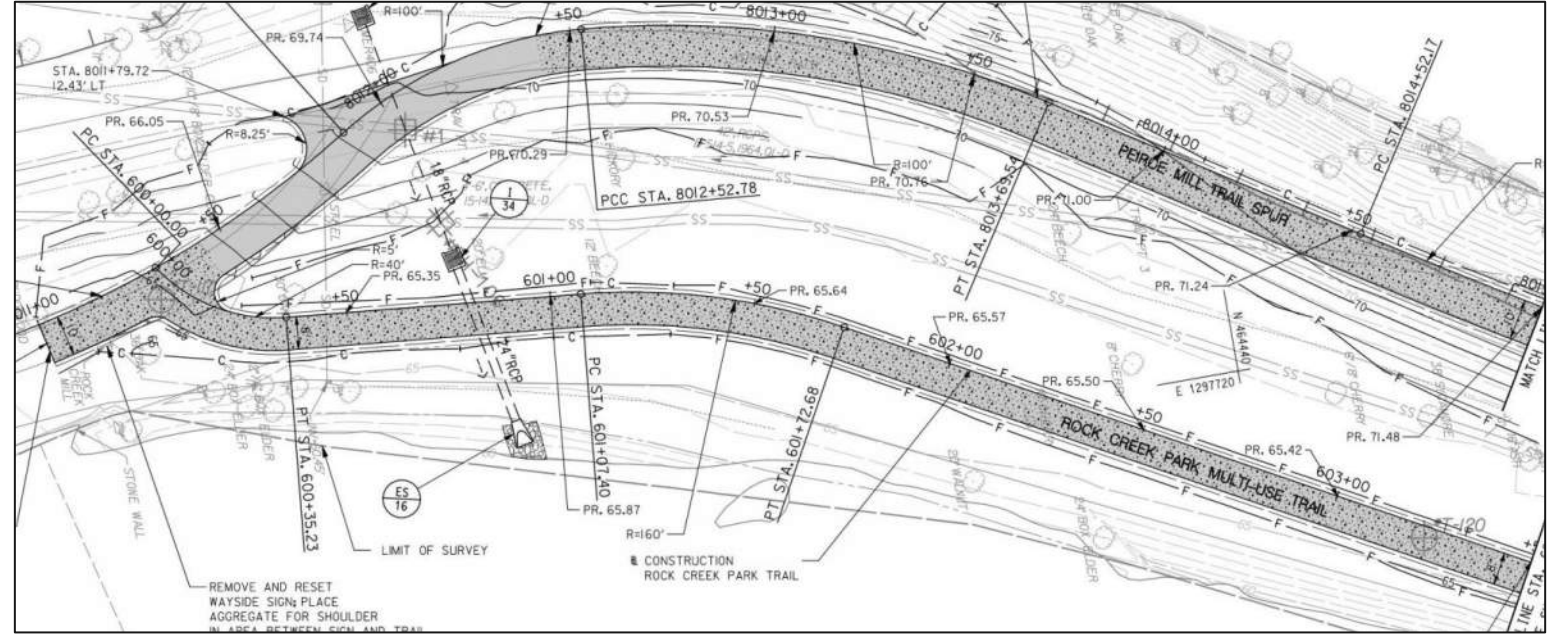
CONSTRUCTION PROGRESS – Segment 6 (Peirce Mill)



Placing new permeable pavement

CONSTRUCTION PROGRESS— Segment 7 (Peirce Mill to Broad Branch)

- Active construction zone
- Construction began in June 2021



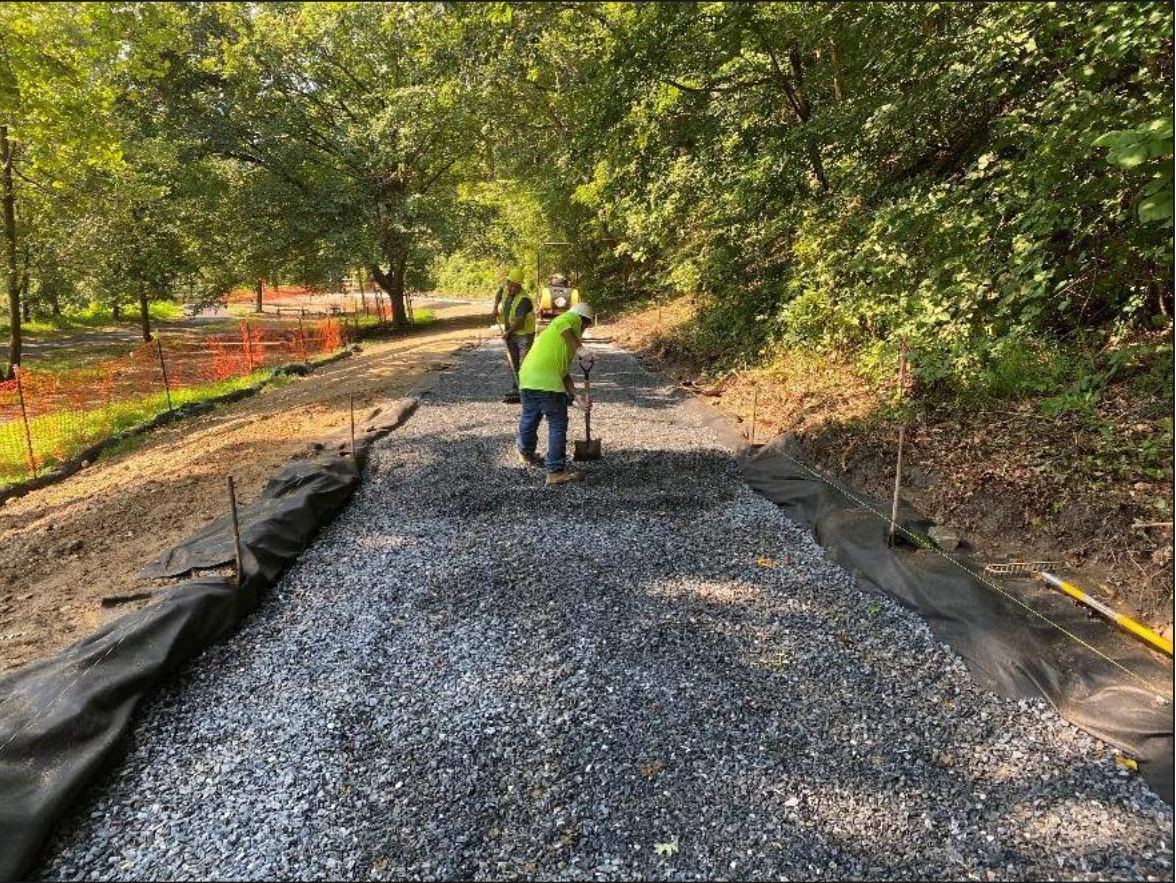
- Existing unpaved social trail replaced with permeable asphalt (Segment 7A)
- Currently reconstructing the existing Peirce Mill Trail Spur (Segment 7B)

CONSTRUCTION PROGRESS – Segment 7 (Peirce Mill to Broad Branch)



Green infrastructure and storm water drainage improvements

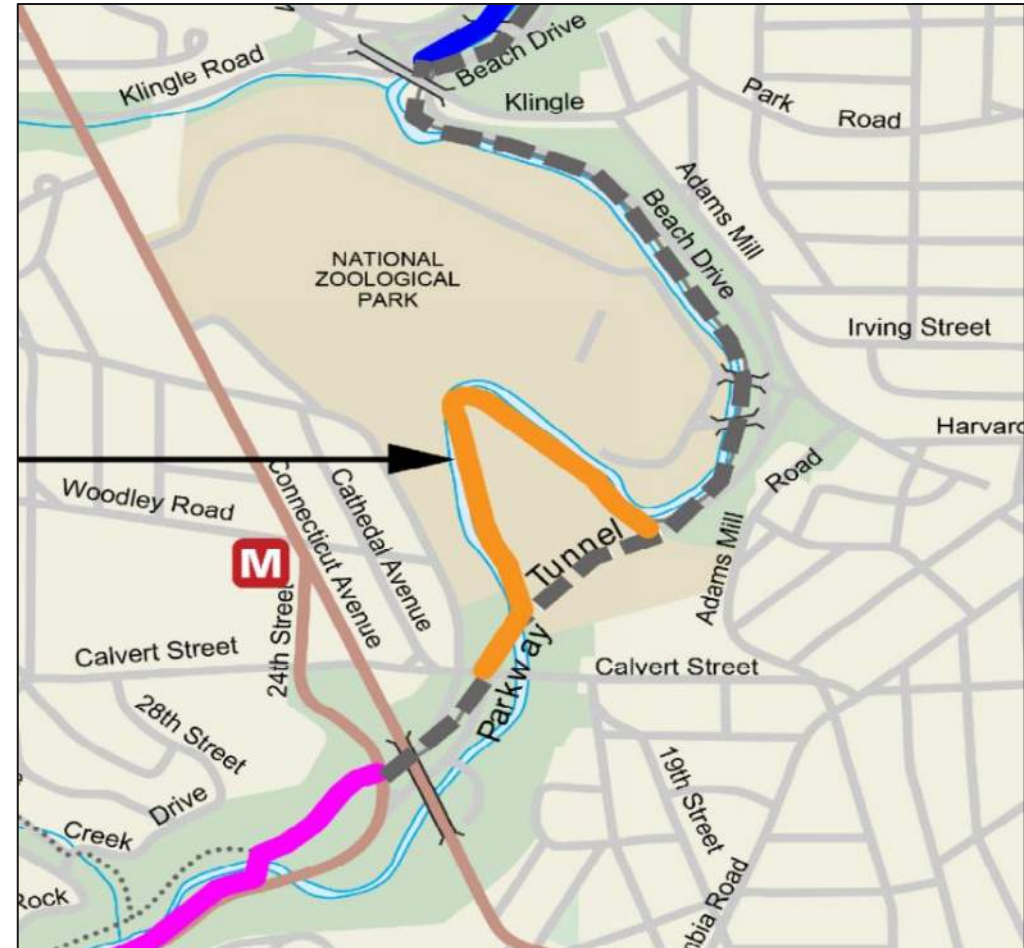
CONSTRUCTION PROGRESS – Segment 7 (Peirce Mill to Broad Branch)



Preparing trail for permeable asphalt placement

CONSTRUCTION PROGRESS – Segment 3 (Zoo Loop)

- Construction started in July 2021
- Work includes:
 - Reconstruction of Zoo Loop trail
 - New pedestrian bridge construction
 - Streambank restoration
- Beach Drive vehicle detour in place
 - 10 AM to 3 PM



Zoo Loop shown in orange

CONSTRUCTION PROGRESS – Segment 3 (Zoo Loop)



Permeable asphalt placement

CONSTRUCTION PROGRESS – Segment 3 (Zoo Loop)



Excavation for bridge abutments



Restoration of eroded streambanks

CONSTRUCTION PROGRESS – Segment 3 (Zoo Loop)



Fabrication of pedestrian bridge beams

CONSTRUCTION PROGRESS – Segment 3 (Zoo Loop)

- Completion of pedestrian bridge schedule for early 2022



Renderings of proposed pedestrian bridge

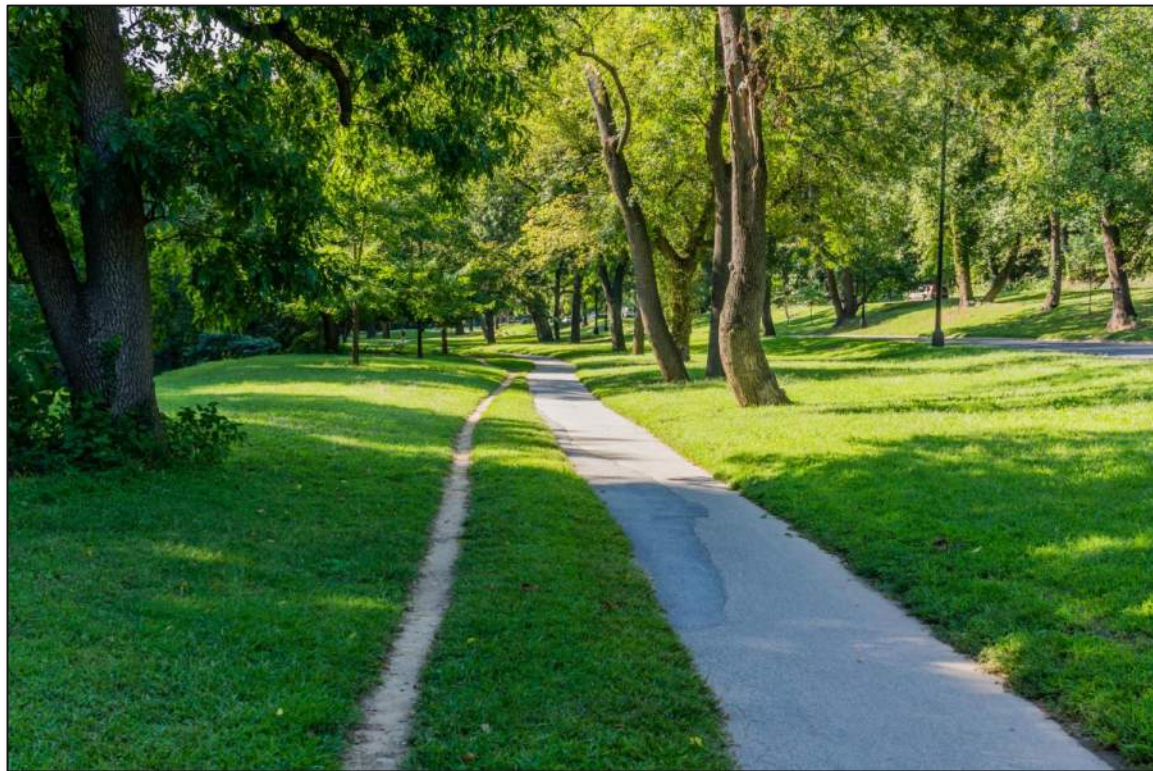
UPCOMING ACTIVITIES – Segment 2 (Rock Creek Park Trail)

Reconstruction of Rock Creek Park Trail

- Construction to start September 13th
- P Street NW to Shoreham Drive NW
 - 10-foot wide trail
- Mix of permeable asphalt and asphalt pavement sections



UPCOMING ACTIVITIES – Segment 2 (Rock Creek Park Trail)

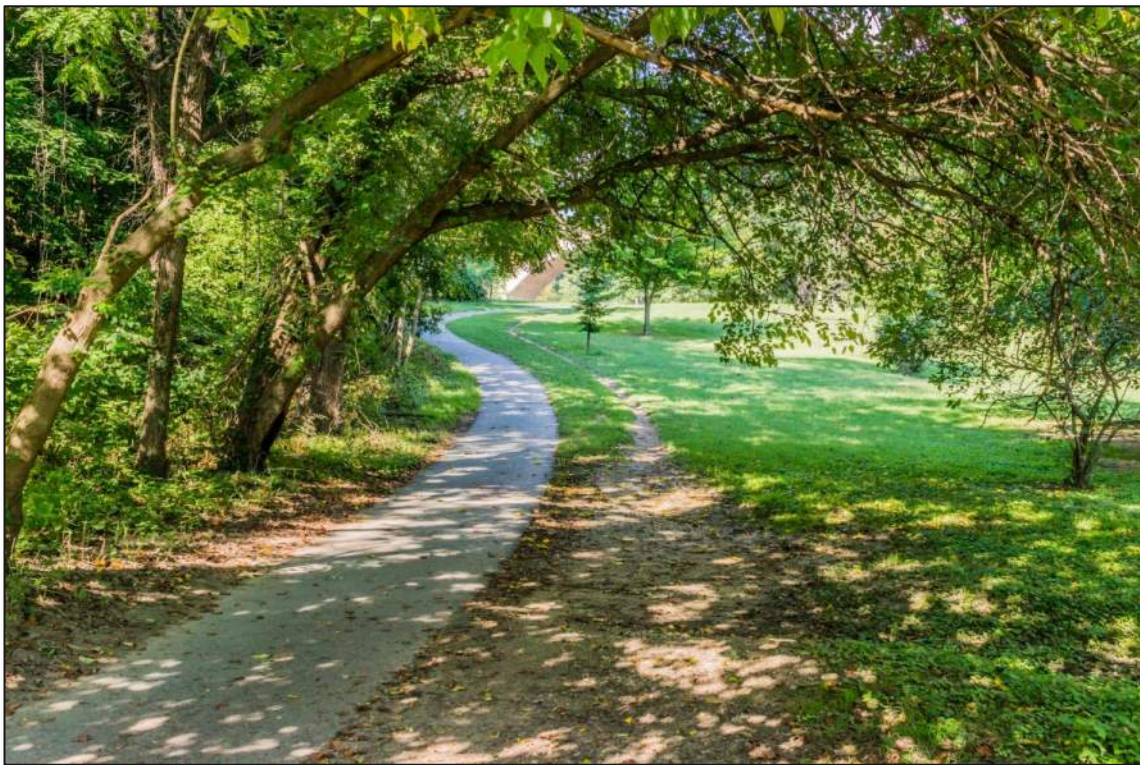


North of Devil's Chair Footbridge (Existing)



North of Devil's Chair Footbridge (Proposed)

UPCOMING ACTIVITIES – Segment 2 (Rock Creek Park Trail)



North of Saddle Club Footbridge (Existing)



North of Saddle Club Footbridge (Proposed)

UPCOMING ACTIVITIES – Segment 2 (Rock Creek Park Trail)

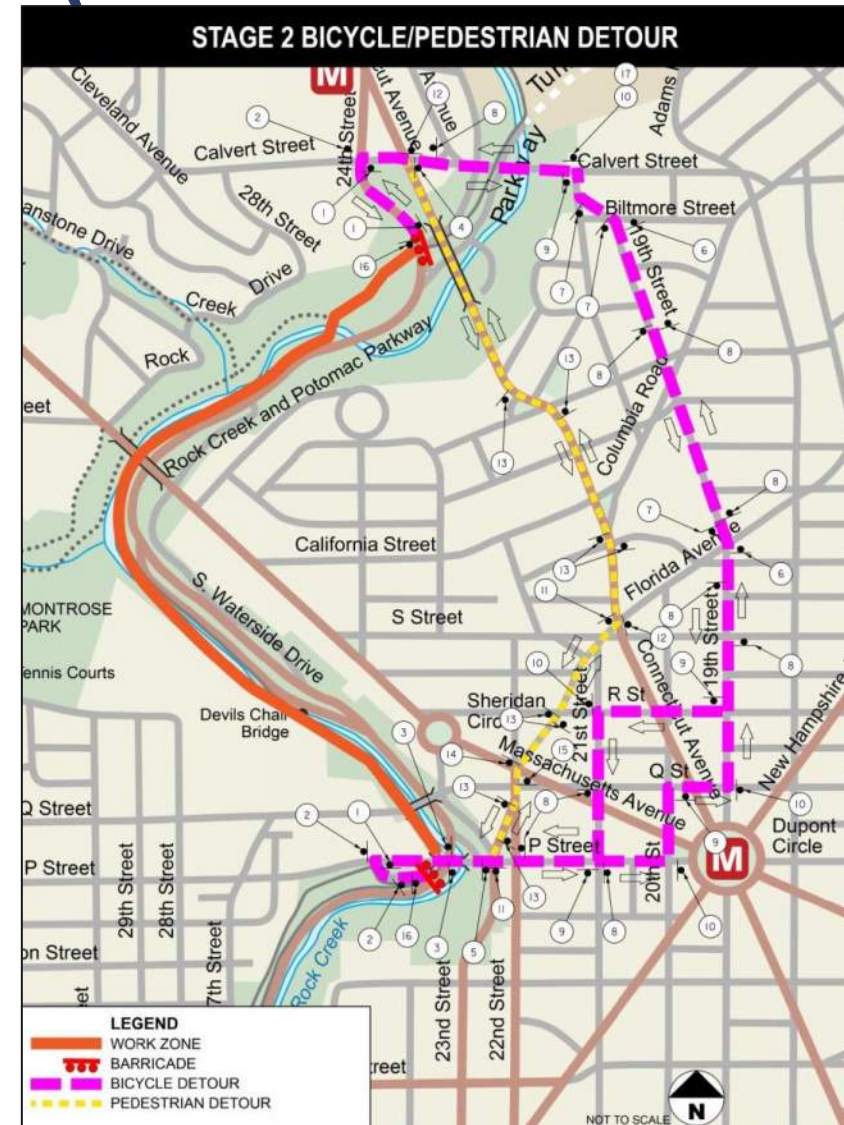
Rock Creek Multi-use Trail closed during construction

Bicycle Detour

- P Street NW, 20th Street NW, Q Street NW, 19th Street NW, Calvert Street NW

Pedestrian Detour

- 22nd Street NW, Florida Avenue NW, Connecticut Avenue NW, Calvert Street NW



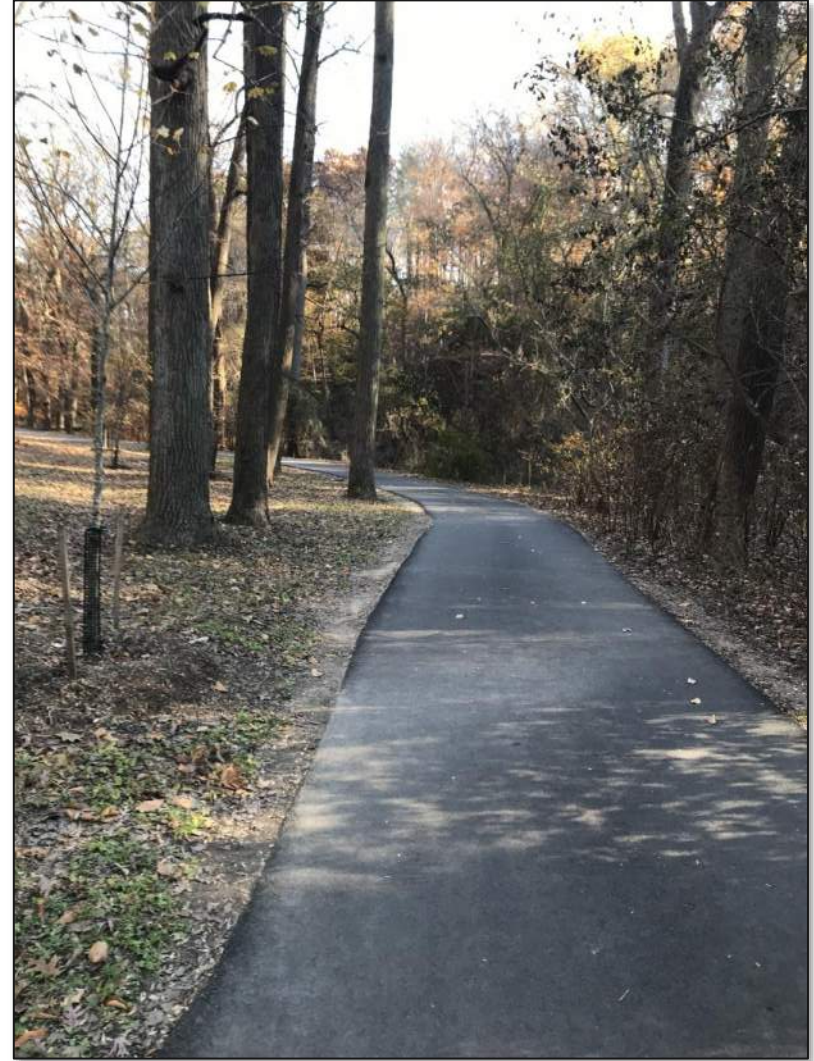
WHAT TO EXPECT DURING CONSTRUCTION

Construction Hours – Monday through Friday

- 7:00 AM to 7:00 PM
- 10:00 AM to 3:00 PM temporary lane closures on Rock Creek Parkway

Saturday, Sunday, and Night Work

- Only for special circumstances with DDOT/NPS approval and advanced notice



SAFETY & TRAFFIC CONTROL

TRAFFIC CONTROL

- Both roadway and trail detours needed to safely construct park improvements
- Detour & Construction Signage
- Portable Variable Message Signs

SAFETY

- Field personnel in high visibility personal protection equipment
- Please respect work zones
- Public entering construction zones slows progress



PUBLIC OUTREACH

Staying Connected with the Community

- Virtual community meetings for each phase of construction
- Stakeholder notifications for major project milestones, construction activity and traffic pattern changes
 - Dedicated project website
 - Dedicated project newsletter
 - DDOT social media outlets
 - NPS newsletter and stakeholder list
- Dedicated Community Outreach Team
- Field Office



The Rock Creek Trail PROJECT INSIDER

Rock Creek Park Multi-Use Trail & Pedestrian Bridge Project

STATUS OF CONSTRUCTION

Progress Summary

Contractors installed pedestrian detours with a temporary turf deck path and began tree removal, root pruning, and drainage work. The contractor has completed the installation of the chain link fence on the Rose Park Trail, wood fence on Western Ridge Trail and completed asphalt paving on Western Ridge Trail.

Also, contractors have continued placing topsoil with seed along Rose Park Trail and Western Ridge Trail for areas in preparation for completion of work in this area.

THE TEAM

Serving our community

Public outreach coordinators are walking the project zone and surrounding area to answer any questions you may have. We have copies of recent traffic advisories and newsletters with us, to hand out. Please feel free to stop us and inquire about this amazing project.

For further information

Please visit the project website: <https://rock-creek-trail-dcgis.hub.arcgis.com>

Placing aggregate stone shoulder at Western Ridge Trail

Wood fence installation on Western Ridge Trail

Placing Type K inlier on Rock Creek Park Trail

Wood fence installation on Western Ridge Trail

Western Ridge Trail

JUNE 2021



STAY CONNECTED

DDOT Project Manager:

Omid Ghaemi, PE

Construction Manager:

Andy Graf, PE

Public Outreach:

Shana Vieira – svieira@jdosinternational.com

Project Website: <https://ddot.dc.gov/page/rock-creek-park-multi-use-trail-and-pedestrian-bridge>

d.

District Department of Transportation